

RNAV 1 - DME/DME/IRU or GPS.

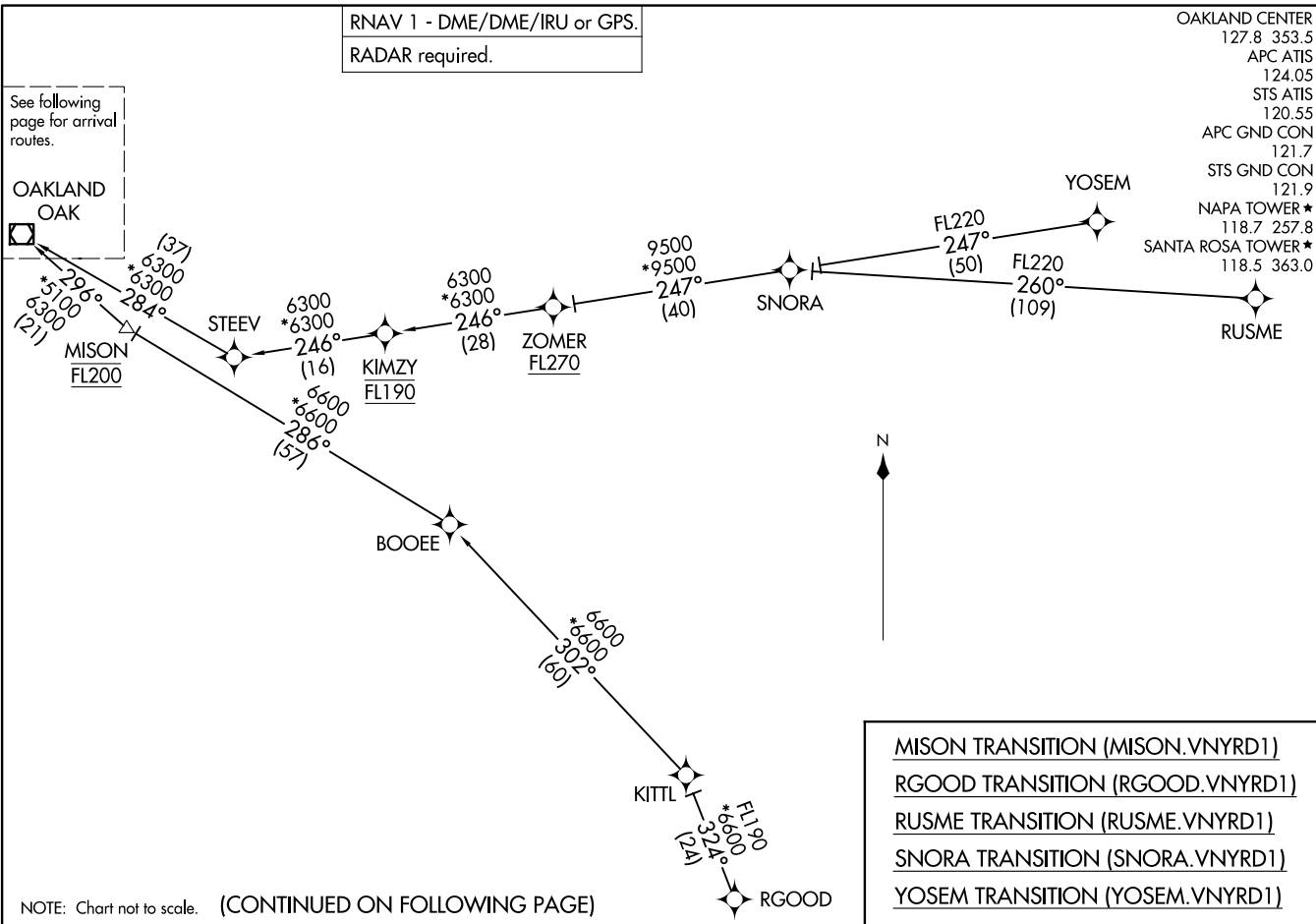
RADAR required.

OAKLAND CENTER  
 127.8 353.5  
 APC ATIS  
 124.05  
 STS ATIS  
 120.55  
 APC GND CON  
 121.7  
 STS GND CON  
 121.9  
 NAPA TOWER ★  
 118.7 257.8  
 SANTA ROSA TOWER ★  
 118.5 363.0

(OAK.VNYRD1) 24193

AL-281 (FAA)  
Transition Routes

NAPA, CALIFORNIA



NOTE: Chart not to scale. (CONTINUED ON FOLLOWING PAGE)

(OAK.VNYRD1) 11JUL24

VNYRD ONE ARRIVAL (RNAV) Transition Routes

NAPA, CALIFORNIA

(OAK.VNYRD1) 24305

AL-281 (FAA)

# VNYRD ONE ARRIVAL (RNAV) Arrival Routes

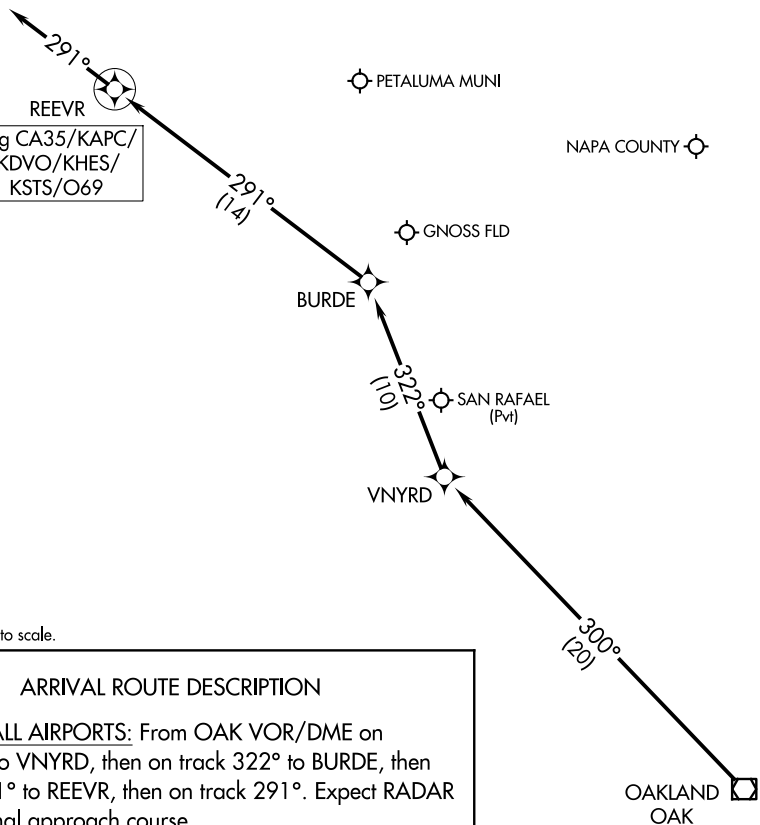
NAPA, CALIFORNIA

HEALDSBURG  
MUNI

RNAV 1 - DME/DME/IRU or GPS.  
RADAR required.

OAKLAND CENTER  
127.8 353.5  
APC ATIS  
124.05  
STS ATIS  
120.55  
APC GND CON  
121.7  
STS GND CON  
121.9  
NAPA TOWER ★  
118.7 257.8  
SANTA ROSA TOWER ★  
118.5 363.0

CHARLES M SCHULZ/  
SONOMA COUNTY



NOTE: Chart not to scale.

## ARRIVAL ROUTE DESCRIPTION

LANDING ALL AIRPORTS: From OAK VOR/DME on track 300° to VNYRD, then on track 322° to BURDE, then on track 291° to REEVR, then on track 291°. Expect RADAR vectors to final approach course.

# VNYRD ONE ARRIVAL (RNAV) Arrival Routes

NAPA, CALIFORNIA

(OAK.VNYRD1) 11JUL24

SW-2, 14 MAY 2026 to 11 JUN 2026

SW-2, 14 MAY 2026 to 11 JUN 2026