

DANIS FOUR DEPARTURE (RNAV)
(DANIS4, DANIS) 27NOV25

NASHVILLE, TENNESSEE
NASHVILLE INTL (BNA)

TOP ALTITUDE:
15000

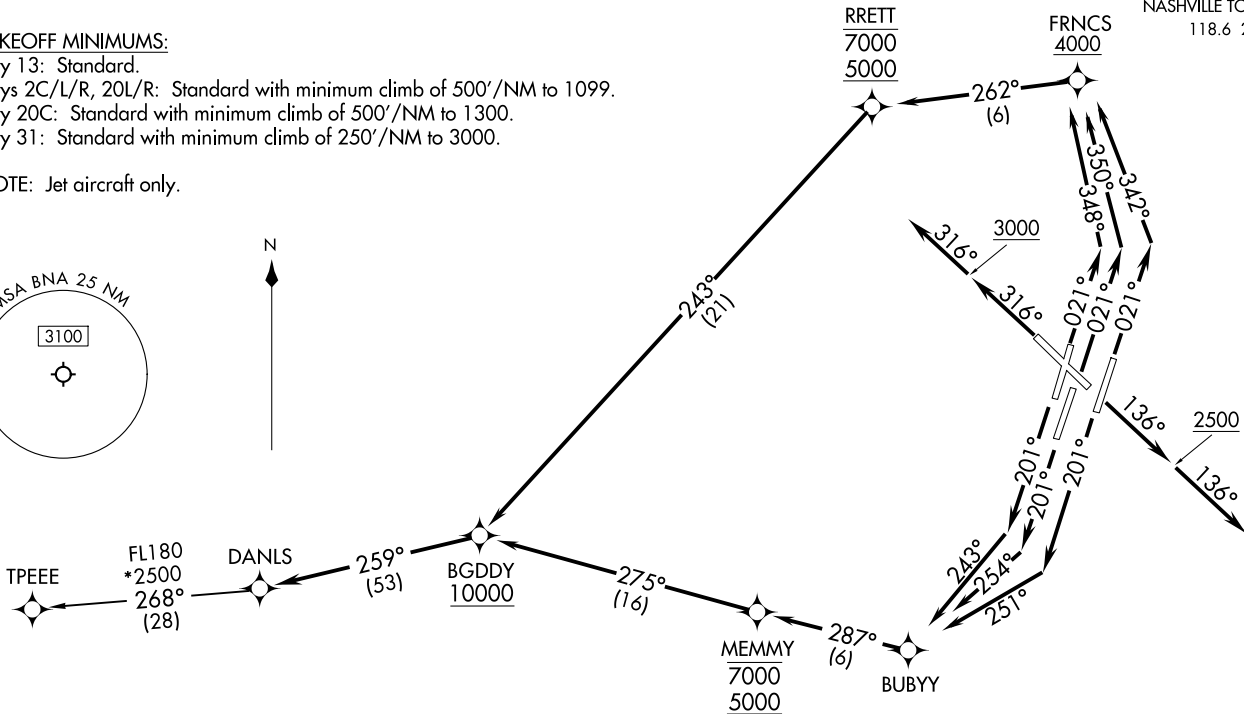
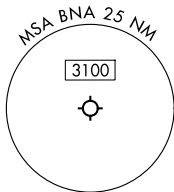
RNAV 1 - DME/DME/IRU or GPS.
RADAR required.

NASHVILLE DEP CON 119.35 372.0
D-ATIS 135.1
CLNC DEL 126.05
CPDLC
GND CON 121.9 348.6
NASHVILLE TOWER 118.6 257.8

TAKEOFF MINIMUMS:

Rwy 13: Standard.
Rwys 2C/L/R, 20L/R: Standard with minimum climb of 500'/NM to 1099.
Rwy 20C: Standard with minimum climb of 500'/NM to 1300.
Rwy 31: Standard with minimum climb of 250'/NM to 3000.

NOTE: Jet aircraft only.



(CONTINUED ON FOLLOWING PAGE)

NOTE: Chart not to scale.

(DANIS4, DANIS) 25331
DANIS FOUR DEPARTURE (RNAV)

NASHVILLE INTL (BNA)
NASHVILLE, TENNESSEE

AL-282 (FAA)

DANLS FOUR DEPARTURE (RNAV)



DEPARTURE ROUTE DESCRIPTION

TAKEOFF RUNWAY 2L: Climb on heading 021° to intercept course 348° to cross FRNCS at or above 4000, then on track 262° to cross RRETT between 5000 and 7000, then on track 243° to cross BGDDY at or above 10000, thence. . . .

TAKEOFF RUNWAY 2C: Climb on heading 021° to intercept course 350° to cross FRNCS at or above 4000, then on track 262° to cross RRETT between 5000 and 7000, then on track 243° to cross BGDDY at or above 10000, thence. . . .

TAKEOFF RUNWAY 2R: Climb on heading 021° to intercept course 342° to cross FRNCS at or above 4000, then on track 262° to cross RRETT between 5000 and 7000, then on track 243° to cross BGDDY at or above 10000, thence. . . .

TAKEOFF RUNWAY 13: Climb on heading 136° to 2500, then on heading 136° or as assigned by ATC for RADAR vectors to cross BGDDY at or above 10000, thence. . . .

TAKEOFF RUNWAY 20L: Climb on heading 201° to intercept course 251° to BUBYY, then on track 287° to cross MEMMY between 5000 and 7000, then on track 275° to cross BGDDY at or above 10000, thence. . . .

TAKEOFF RUNWAY 20C: Climb on heading 201° to intercept course 254° to BUBYY, then on track 287° to cross MEMMY between 5000 and 7000, then on track 275° to cross BGDDY at or above 10000, thence. . . .

TAKEOFF RUNWAY 20R: Climb on heading 201° to intercept course 243° to BUBYY, then on track 287° to cross MEMMY between 5000 and 7000, then on track 275° to cross BGDDY at or above 10000, thence. . . .

TAKEOFF RUNWAY 31: Climb on heading 316° to 3000, then on heading 316° or as assigned by ATC for RADAR vectors to cross BGDDY at or above 10000, thence. . . .

. . . on track 259° to DANLS. Maintain 15000, expect filed altitude 10 minutes after departure.

TPEEE TRANSITION (DANLS4.TPEEE)

SE-1, 14 MAY 2026 to 11 JUN 2026

SE-1, 14 MAY 2026 to 11 JUN 2026