

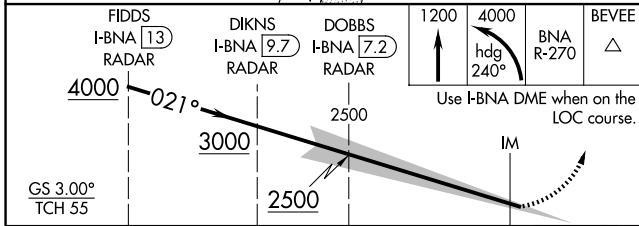
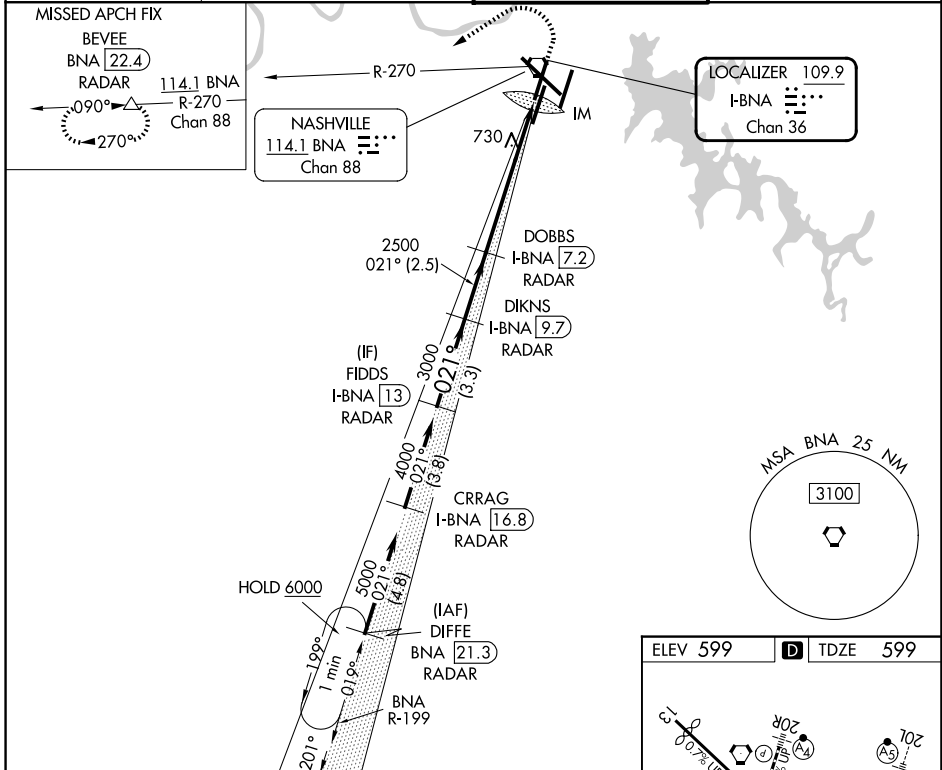
LOC/DME I-BNA 109.9 Chan 36	APP CRS 021°	Rwy Ldg 7702
		TDZE 599
		Apt Elev 599

ILS RWY 2L (SA CAT I)

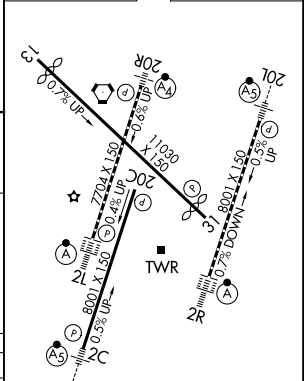
NASHVILLE INTL (BNA)

DME or RADAR required. RADAR required for procedure entry.	ALSF-2 	MISSED APPROACH: Climb to 1200 then climbing left turn to 4000 on heading 240° and on BNA VORTAC R-270 to BEVEE/BNA VORTAC 22.4 DME/RADAR and hold.
Simultaneous approach authorized. Requires specific OPSPEC, MSPEC, or LOA approval.		

D-ATIS 135.1	NASHVILLE APP CON 118.4 360.7 (030°-196°) 119.35 372.0 (197°-029°)	NASHVILLE TOWER 118.6 257.8	GND CON 121.9 348.6
------------------------	--	---------------------------------------	-------------------------------



ELEV 599	D TDZE 599
----------	-------------------



CATEGORY	A	B	C	D
----------	---	---	---	---

S-ILS 2L RA 155/14 150 DA 749

SA CATEGORY I ILS - SPECIAL AIRCREW & AIRCRAFT CERTIFICATION REQUIRED

HIRL all Rws
TDZL/RCLS Rws 2L and 2R
REIL Rws 13, 20C and 31

SE-1, 14 MAY 2026 to 11 JUN 2026

SE-1, 14 MAY 2026 to 11 JUN 2026