

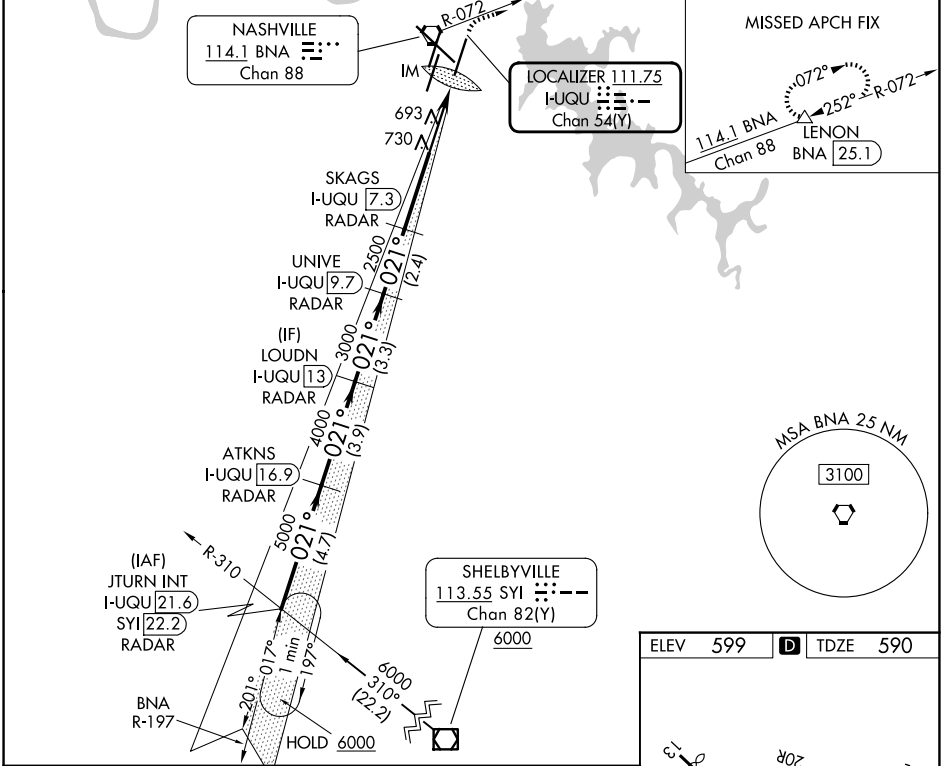
LOC/DME I-UQU 111.75 Chan 54 (Y)	APP CRS 021°	Rwy Ldg TDZE Apt Elev 8000 590 599
--	------------------------	--

ILS RWY 2R (CAT II & III)

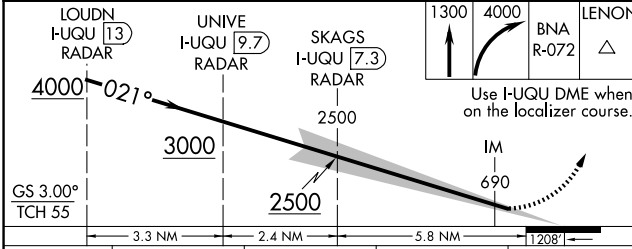
NASHVILLE INTL (BNA)

DME required.	ALSF-2	MISSED APPROACH: Climb to 1300, then climbing right turn to 4000 on BNA VORTAC R-072 to LENON/ BNA 25.1 DME and hold.
<p>Simultaneous approach authorized. Cat II: RVR 1000 authorized with specific OPSPEC, MSPEC, or LOA approval and use of autoland or HUD to touchdown.</p>		

D-ATIS 135.1	NASHVILLE APP CON 118.4 360.7 (030°-196°) 119.35 372.0 (197°-029°)	NASHVILLE TOWER 118.6 257.8	GND CON 121.9 348.6
------------------------	--	---------------------------------------	-------------------------------

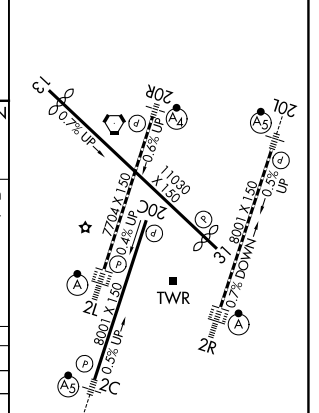


ELEV 599	D	TDZE 590
----------	----------	----------



CATEGORY	A	B	C	D
S-ILS 2R	CAT II RA 116/12 100 DA 690			
S-ILS 2R	CAT III RVR 06			

CATEGORY II & III ILS - SPECIAL AIRCREW & AIRCRAFT CERTIFICATION REQUIRED



HIRL all Rwy's
TDZL/RCLS Rwy's 2L and 2R
REIL Rwy's 13, 20C, and 31

SE-1, 14 MAY 2026 to 11 JUN 2026

SE-1, 14 MAY 2026 to 11 JUN 2026