

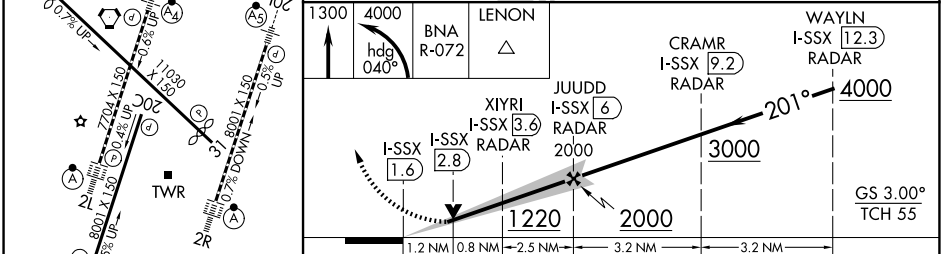
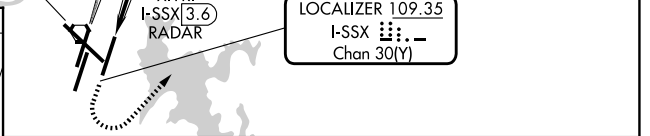
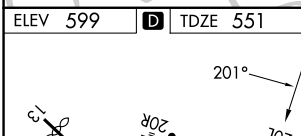
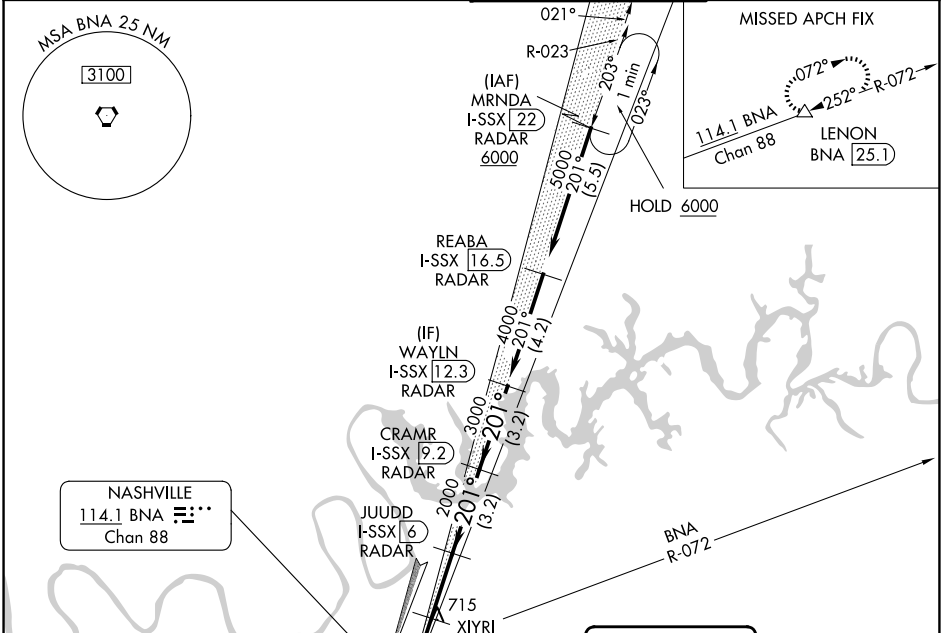
LOC/DME I-SSX <b>109.35</b> Chan 30 (Y)	APP CRS <b>201°</b>	Rwy Ldg 8000 TDZE 551 Apt Elev 599
---	------------------------	---

# ILS or LOC RWY 20L

NASHVILLE INTL (BNA)

DME required. RADAR required for procedure entry. ▼ Simultaneous approach authorized. ▲ * RVR 1800 authorized with use of FD or AP or HUD to DA.	MALSR MISSED APPROACH: Climb to 1300, then climbing left turn to 4000 on heading 040° and on BNA VORTAC R-072 to LENON/BNA 25.1 DME and hold.
--	--

D-ATIS <b>135.1</b>	NASHVILLE APP CON <b>118.4 360.7</b> (030°-196°) <b>119.35 372.0</b> (197°-029°)	NASHVILLE TOWER <b>118.6 257.8</b>	GND CON <b>121.9 348.6</b>
------------------------	--	---------------------------------------	-------------------------------



CATEGORY	A	B	C	D
S-ILS 20L*	751/24 200 (200-½)			
S-LOC 20L	980/24	429 (400-½)	980/40	429 (400-¾)
CIRCLING	1100-1 501 (600-1)	1120-1 521 (600-1)	1200-1¾ 601 (700-1¾)	1380-2½ 781 (800-2½)

HIRL all Rwys  
TDZL/RCLS Rwys 2L and 2R  
REL Rwys 13, 20C, and 31

SE-1, 14 MAY 2026 to 11 JUN 2026

SE-1, 14 MAY 2026 to 11 JUN 2026