

LOC I-VIY 111.3	APP CRS 201°	Rwy Ldg 7702 8001	20R 578	20C 588
		TDZE 599	588	599
		Apt Elev	599	599

ILS or LOC RWY 20R

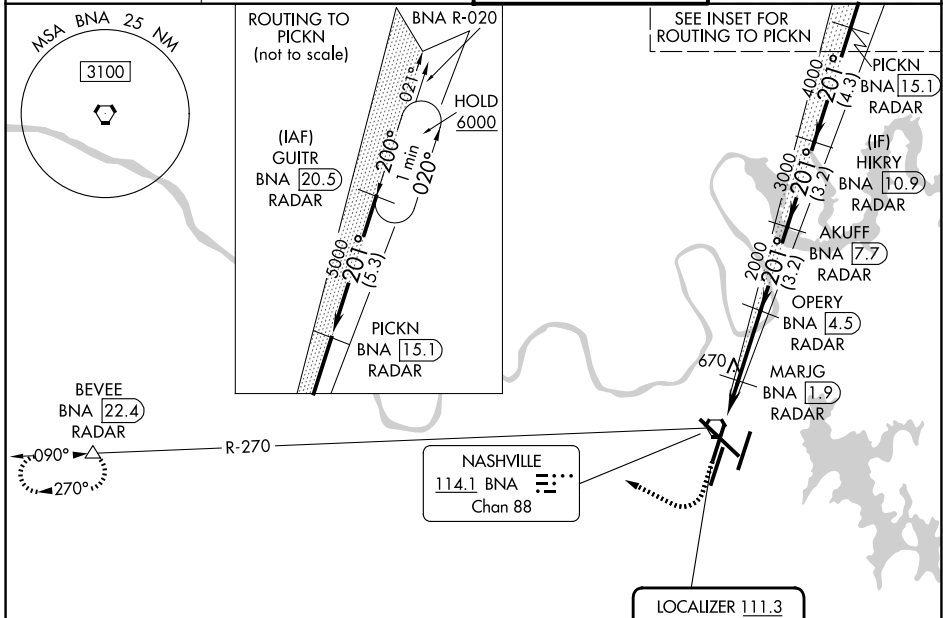
NASHVILLE INTL (BNA)

DME or RADAR required. RADAR required for procedure entry.

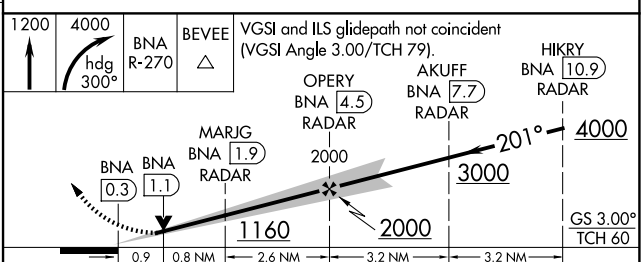
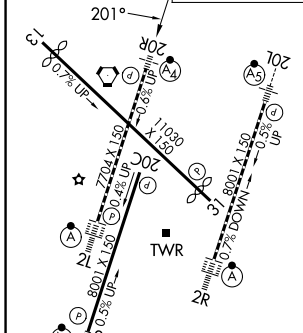
MAJLF MISSED APPROACH: Climb to 1200 then climbing right turn to 4000 on heading 300° and on BNA VORTAC R-270 to BEVEE/BNA 22.4 DME/RADAR and hold.

Simultaneous approach authorized. Inop table does not apply to S-ILS 20R all Cats. DME from BNA VORTAC. DME use requires simultaneous reception of I-VIY and BNA DME.

D-ATIS 135.1	NASHVILLE APP CON 118.4 360.7 (030°-196°) 119.35 372.0 (197°-029°)	NASHVILLE TOWER 118.6 257.8	GND CON 121.9 348.6
------------------------	--	---------------------------------------	-------------------------------



ELEV 599	D	TDZE 20R 578	TDZE 20C 588
----------	----------	--------------	--------------



CATEGORY	A	B	C	D
S-ILS 20R		778/40	200 (200-¾)	
S-LOC 20R		920/40	342 (400-¾)	
SIDESTEP 20C	960-1	372 (400-1)	960-1½ 372 (400-1½)	960-2 372 (400-2)
CIRCLING	1100-1 501 (600-1)	1120-1 521 (600-1)	1200-1¾ 601 (700-1¾)	1380-2½ 781 (800-2½)

SE-1, 14 MAY 2026 to 11 JUN 2026

SE-1, 14 MAY 2026 to 11 JUN 2026