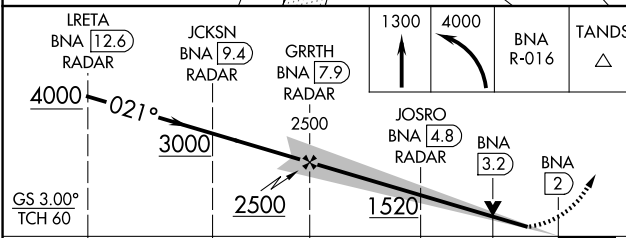
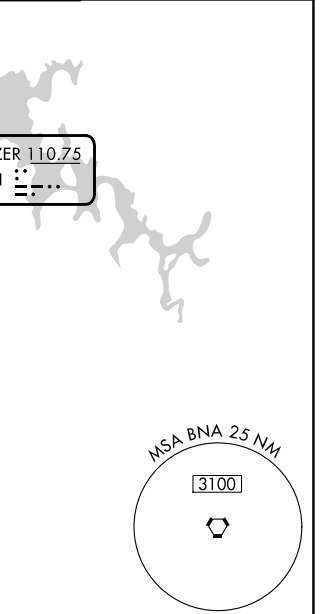
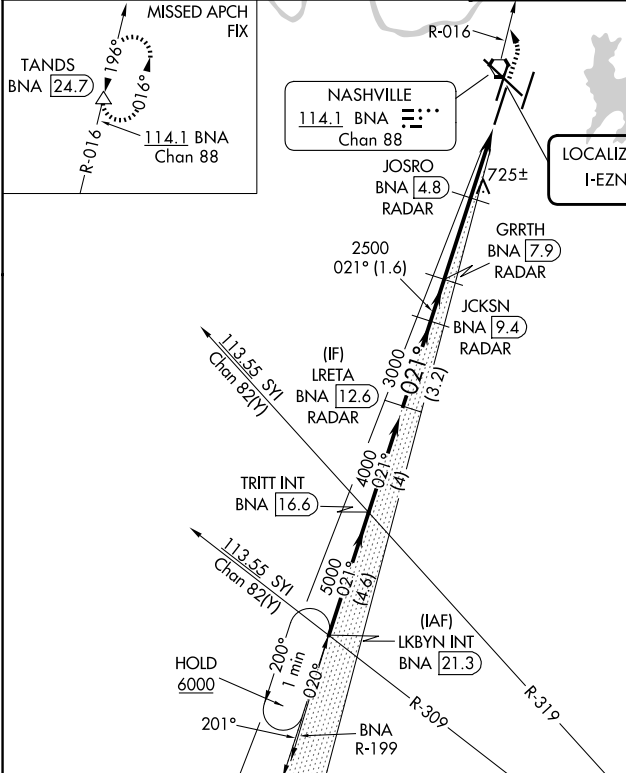


LOC I-EZN <b>110.75</b>	APP CRS <b>021°</b>	Rwy Ldg TDZE Apt Elev	<b>7601</b> <b>587</b> <b>599</b>
----------------------------	------------------------	-----------------------------	---

# ILS or LOC RWY 2C

NASHVILLE INTL (BNA)

DME or RADAR required.		MALSR 	MISSED APPROACH: Climb to 1300 then climbing left turn to 4000 on BNA VORTAC R-016 to TANDS/BNA 24.7 and hold.
Simultaneous approach authorized. DME from BNA VORTAC. DME use requires simultaneous reception of I-EZN and BNA. For inop ALS, increase S-LOC 2C Cats C and D visibility to RVR 6000. *RVR 1800 authorized with use of FD or AP or HUD to DA.			
D-ATIS <b>135.1</b>	NASHVILLE APP CON <b>118.4 360.7</b> (030°-196°) <b>119.35 372.0</b> (197°-029°)	NASHVILLE TOWER <b>118.6 257.8</b>	GND CON <b>121.9 348.6</b>



ELEV 599	<b>D</b> TDZE 587
HIRL all Rwys TDZL/RCLS Rwys 2L and 2R REIL Rwys 13, 20C, and 31	
FAF to MAP 5.9 NM	
Knots	60 90 120 150 180
Min:Sec	5:54 3:56 2:57 2:22 1:58

CATEGORY	A	B	C	D
S-ILS 2C*	787/24 200 (200-½)			
S-LOC 2C	980/24	393 (400-½)	980/35	393 (400-¾)
CIRCLING	1100-1 501 (600-1)	1120-1 521 (600-1)	1160-1½ 561 (600-1½)	1380-2½ 781 (800-2½)

SE-1, 14 MAY 2026 to 11 JUN 2026

SE-1, 14 MAY 2026 to 11 JUN 2026