

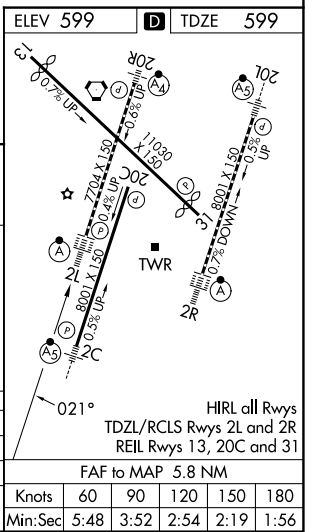
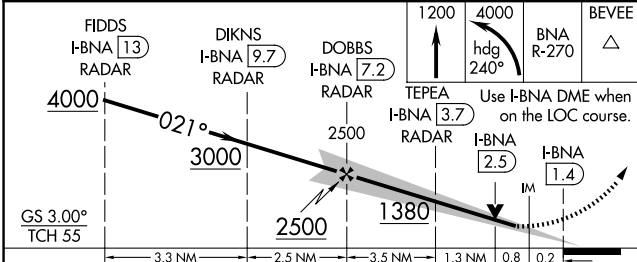
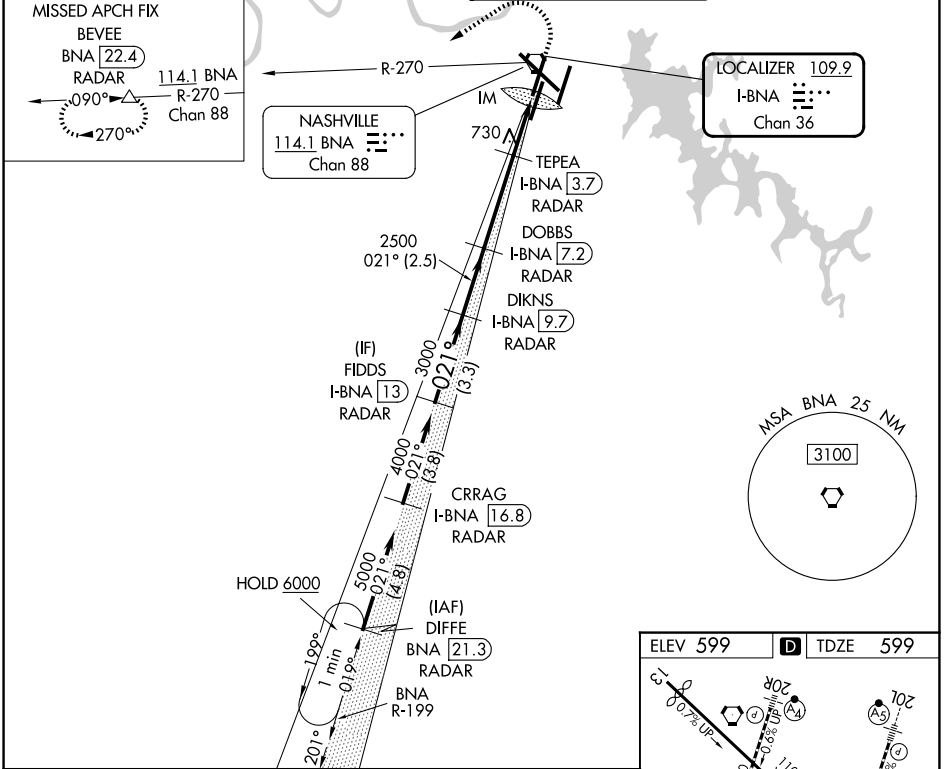
LOC/DME I-BNA 109.9 Chan 36	APP CRS 021°	Rwy Ldg TDZE Apt Elev	7702 599 599
---	------------------------	-----------------------------	---

ILS or LOC RWY 2L

NASHVILLE INTL (BNA)

DME or RADAR required. RADAR required for procedure entry.		ALSF-2	MISSED APPROACH: Climb to 1200 then climbing left turn to 4000 on heading 240° and on BNA VORTAC R-270 to BEVEE/BNA VORTAC 22.4 DME/RADAR and hold.
Simultaneous approach authorized.		(A)	

D-ATIS 135.1	NASHVILLE APP CON 118.4 360.7 (030°-196°) 119.35 372.0 (197°-029°)	NASHVILLE TOWER 118.6 257.8	GND CON 121.9 348.6
------------------------	--	---------------------------------------	-------------------------------



CATEGORY	A	B	C	D
S-ILS 2L	799/18 200 (200-½)			
S-LOC 2L	980/24	381 (400-½)	980/35	381 (400-¾)
CIRCLING	1100-1 501 (600-1)	1120-1 521 (600-1)	1200-1¼ 601 (700-1¾)	1380-2½ 781 (800-2½)

SE-1, 14 MAY 2026 to 11 JUN 2026

SE-1, 14 MAY 2026 to 11 JUN 2026