

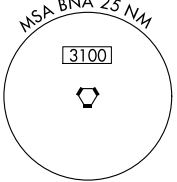
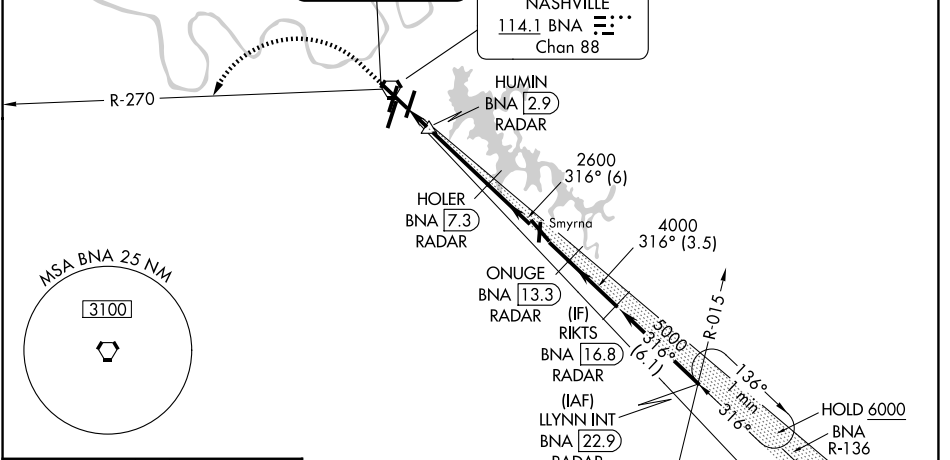
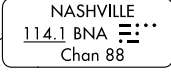
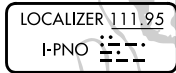
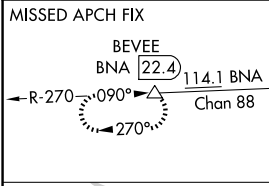
LOC I-PNO <b>111.95</b>	APP CRS <b>316°</b>	Rwy Ldg TDZE Apt Elev	<b>9487</b> <b>578</b> <b>599</b>
----------------------------	------------------------	-----------------------------	---

# ILS or LOC RWY 31

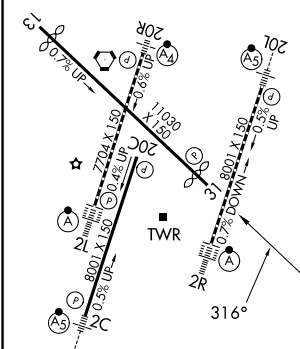
NASHVILLE INTL (BNA)

DME or RADAR required.	MISSED APPROACH: Climb to 1400 then climbing left turn to 4000 on BNA VORTAC R-270 to BEVEE/BNA 22.4 DME and hold.
<p><b>▼</b> DME from BNA VORTAC. DME use requires simultaneous reception of I-PNO and BNA.</p> <p><b>▲</b></p>	

D-ATIS <b>135.1</b>	NASHVILLE APP CON <b>118.4 360.7</b> (030°-196°) <b>119.35 372.0</b> (197°-029°)	NASHVILLE TOWER <b>118.6 257.8</b>	GND CON <b>121.9 348.6</b>
------------------------	--	---------------------------------------	-------------------------------



ELEV 599	<b>D</b>	TDZE 578
----------	----------	----------



1400	4000	BEVEE	HOLER	ONUGE	RIKTS
BNA R-270	BNA	△	BNA 7.3 RADAR	BNA 13.3 RADAR	BNA 16.8 RADAR
			HUMIN		
			BNA 2.9 RADAR		
					5000
					GS 3.00°
					TCH 52
	1.2 NM	0.6 NM	4.4 NM	6 NM	3.5 NM
CATEGORY	A	B	C	D	

HIRL all Rwys  
TDZL/RCLS Rwys 2L and 2R  
REIL Rwys 13, 20C, and 31

FAF to MAP 6.2 NM

Knots	60	90	120	150	180
Min:Sec	6:12	4:08	3:06	2:29	2:04

S-ILS 31	778-3/4 200 (200-3/4)			
S-LOC 31	1020-1	442 (500-1)	1020-1 3/8	442 (500-1 3/8)
CIRCLING	1100-1 501 (600-1)	1120-1 521 (600-1)	1160-1 1/2 561 (600-1 1/2)	1380-2 1/2 781 (800-2 1/2)

SE-1, 14 MAY 2026 to 11 JUN 2026

SE-1, 14 MAY 2026 to 11 JUN 2026