

**TOP ALTITUDE:  
4000**

**TAKEOFF MINIMUMS:**

Rwys 2C/R, 13: Standard.

Rwy 2L: Standard with minimum climb of 205' per NM to 2600.

Rwy 20L: Standard with minimum climb of 225' per NM to 2600.

Rwy 20C: Standard with minimum climb of 260' per NM to 2600.

Rwy 20R: Standard with minimum climb of 235' per NM to 2600.

Rwy 31: Standard with minimum climb of 240' per NM to 2600.

(NARRATIVE ON FOLLOWING PAGE)

NOTE: Chart not to scale.

D-ATIS 135.1  
CLNC DEL 126.05  
CPDLC  
GND CON 121.9 348.6  
NASHVILLE TOWER 118.6 257.8

BRICKYARD  
116.3 VHP  
Chan 110

LOUISVILLE  
114.8 IUU  
Chan 95

POCKET CITY  
113.3 PVX  
Chan 80

WEST DEP CON  
119.35 372.0

EAST DEP CON  
118.4 360.7

LEXINGTON  
112.6 HYK  
Chan 73

LONDON  
116.55 LOZ  
Chan 112 (Y)

WALNUT RIDGE  
114.5 ARG  
Chan 92

NASHVILLE  
114.1 BNA  
Chan 88

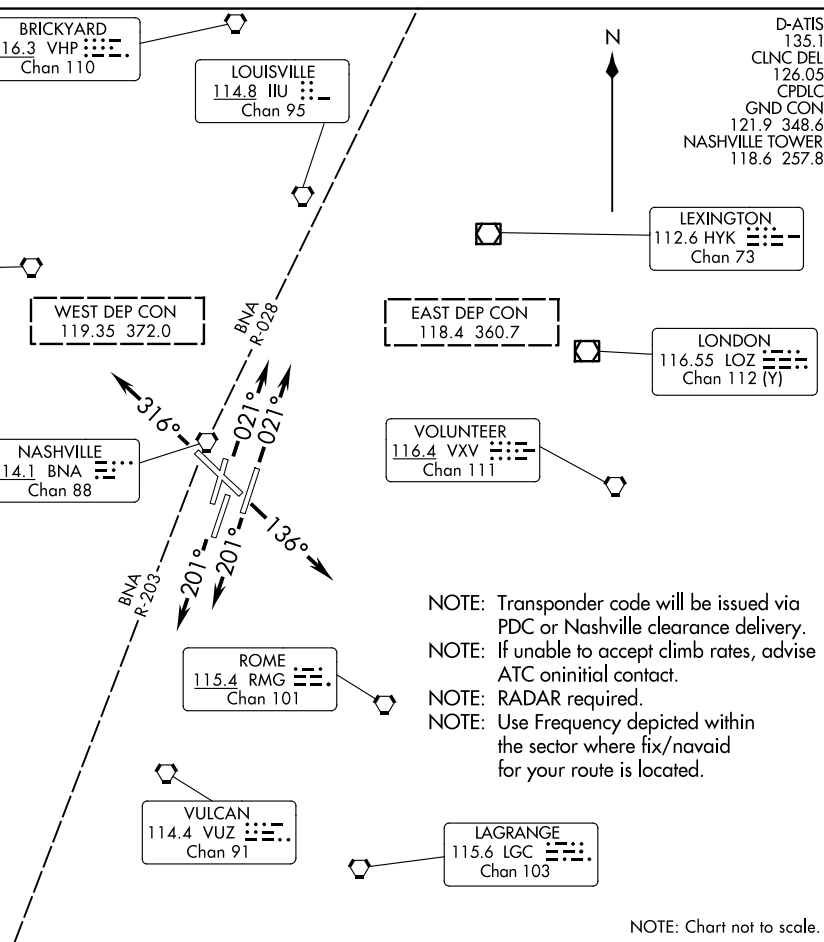
VOLUNTEER  
116.4 VXV  
Chan 111

ROME  
115.4 RMG  
Chan 101

VULCAN  
114.4 VUZ  
Chan 91

LAGRANGE  
115.6 LGC  
Chan 103

MAGNOLIA  
113.2 MHZ  
Chan 79



# NASHVILLE SEVEN DEPARTURE



## DEPARTURE ROUTE DESCRIPTION

TAKEOFF RUNWAYS 2L/C/R: Climb on heading 021° or assigned ATC heading, thence....

TAKEOFF RUNWAY 13: Climb on heading 136° or assigned ATC heading, thence....

TAKEOFF RUNWAYS 20L/C/R: Climb on heading 201° or assigned ATC heading, thence....

TAKEOFF RUNWAY 31: Climb on heading 316° or assigned ATC heading, thence....

....maintain 4000. Expect radar vectors and clearance to filed altitude within 5 minutes after departure.

SE-1, 14 MAY 2026 to 11 JUN 2026

SE-1, 14 MAY 2026 to 11 JUN 2026