

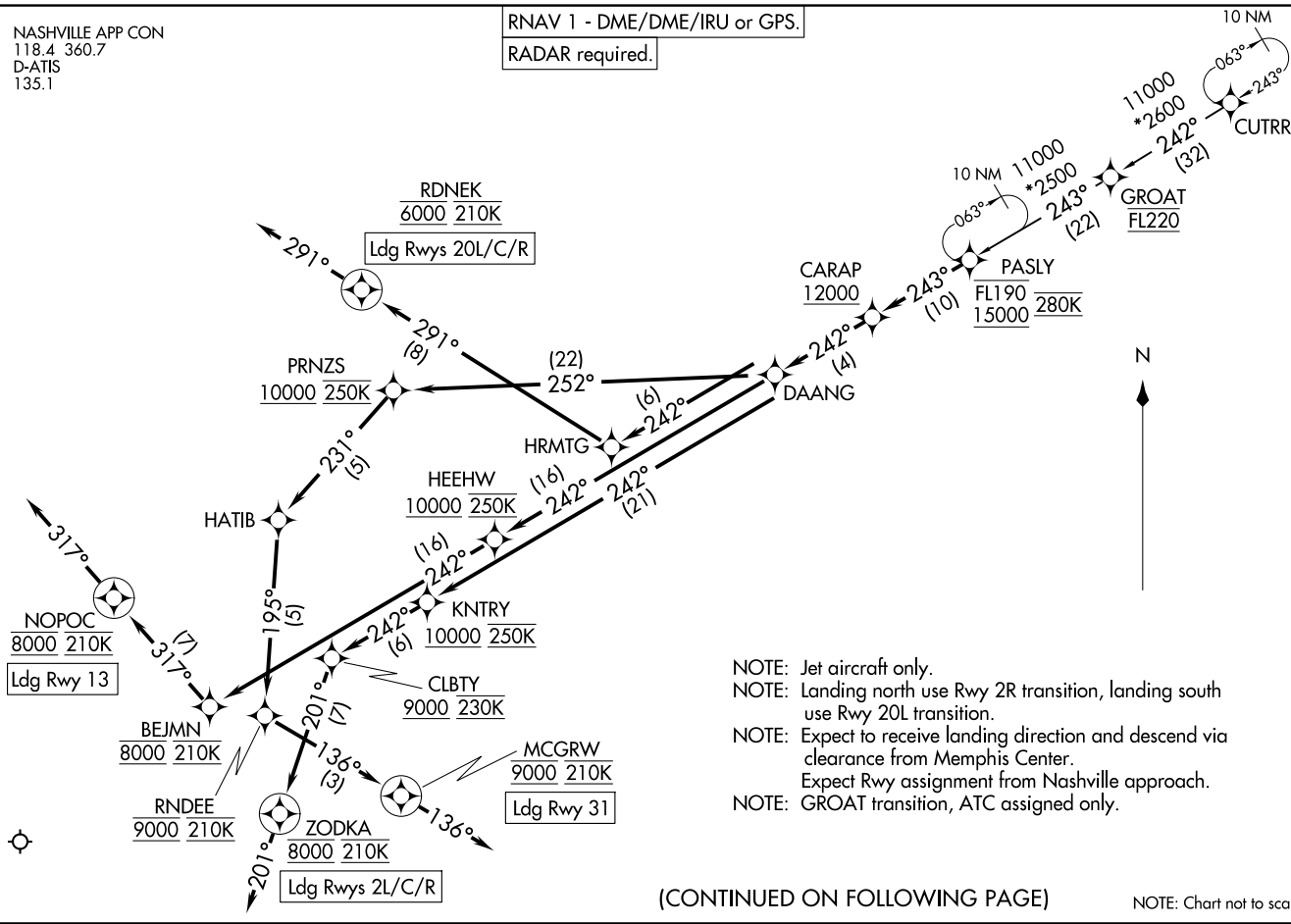
NASHVILLE APP CON
118.4 360.7
D-ATIS
135.1

RNAV 1 - DME/DME/IRU or GPS.

RADAR required.

PASLY FIVE ARRIVAL (RNAV)
(PASLY, PASLY5) 020CT25

NASHVILLE, TENNESSEE
NASHVILLE INTL (BNA)



- NOTE: Jet aircraft only.
- NOTE: Landing north use Rwy 2R transition, landing south use Rwy 20L transition.
- NOTE: Expect to receive landing direction and descend via clearance from Memphis Center.
- NOTE: Expect Rwy assignment from Nashville approach.
- NOTE: GROAT transition, ATC assigned only.

(CONTINUED ON FOLLOWING PAGE)

NOTE: Chart not to scale.

PASLY FIVE ARRIVAL (RNAV)
(PASLY, PASLY5) 25275

NASHVILLE INTL (BNA)
NASHVILLE, TENNESSEE

AL-282 (FAA)

PASLY FIVE ARRIVAL (RNAV)

ARRIVAL ROUTE DESCRIPTION

CUTRR TRANSITION (CUTRR.PASLY5)

GROAT TRANSITION (GROAT.PASLY5)

From PASLY on track 243° to cross CARAP at or above 12000, then on track 242° to DAANG.

LANDING RUNWAYS 2L/C/R: From DAANG on track 242° to cross KNTRY at or above 10000 and at 250K, then on track 242° to cross CLBTY at or above 9000 and at 230K, then on track 201° to cross ZODKA at 8000 and at 210K, then on track 201°. Expect RADAR vectors to final approach course.

LANDING RUNWAY 13: From DAANG on track 242° to cross HEEHW at or above 10000 and at 250K, then on track 242° to cross BEJMN at 8000 and at 210K, then on track 317° to cross NOPOC at 8000 and at 210K, then on track 317°. Expect RADAR vectors to final approach course.

LANDING RUNWAYS 20L/C/R: From DAANG on track 242° to HRMTG, then on track 291° to cross RDNEK at 6000 and at 210K, then on track 291°. Expect RADAR vectors to final approach course.

LANDING RUNWAY 31: From DAANG on track 252° to cross PRNZS at or above 10000 and at 250K, then on track 231° to HATIB, then on track 195° to cross RNDEE at 9000 and at 210K, then on track 136° to cross MCGRW at 9000 and at 210K, then on track 136°. Expect RADAR vectors to final approach course.

SE-1, 14 MAY 2026 to 11 JUN 2026

SE-1, 14 MAY 2026 to 11 JUN 2026