

APP CRS	Rwy Ldg	<b>9487</b>
<b>136°</b>	TDZE	<b>567</b>
	Apt Elev	<b>599</b>

# RNAV (GPS) RWY 13

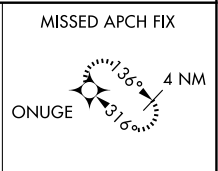
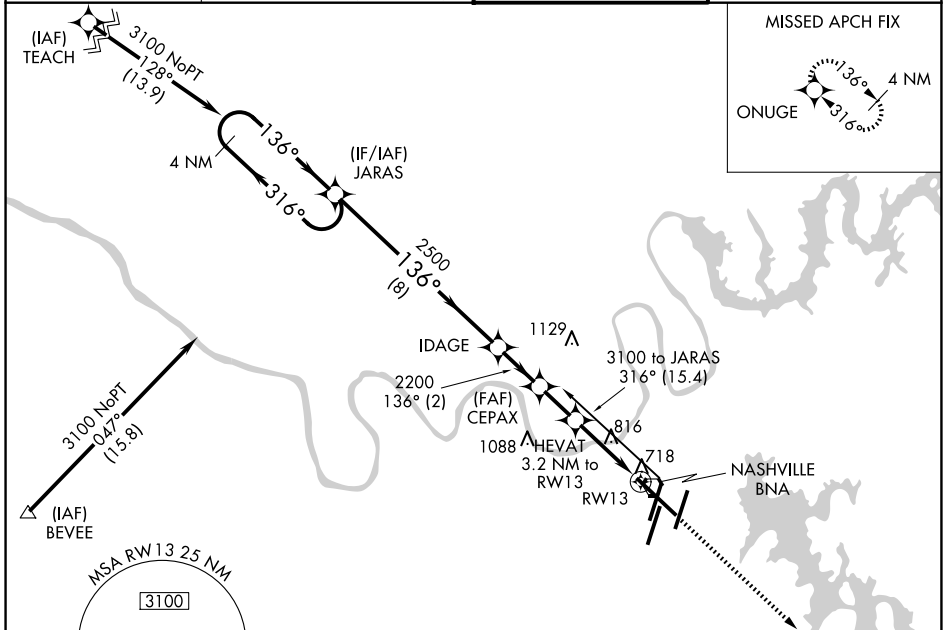
NASHVILLE INTL (BNA)

RNP APCH.

**▼** For uncompensated Baro-VNAV systems, LNAV/VNAV  
**▲** NA below -16°C or above 47°C.

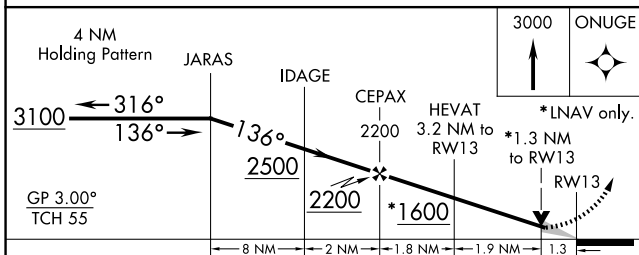
MISSED APPROACH: Climb to 3000 direct ONUGE and hold.

D-ATIS <b>135.1</b>	NASHVILLE APP CON <b>118.4 360.7</b> (030°-196°) <b>119.35 372.0</b> (197°-029°)	NASHVILLE TOWER <b>118.6 257.8</b>	GND CON <b>121.9 348.6</b>
------------------------	--	---------------------------------------	-------------------------------

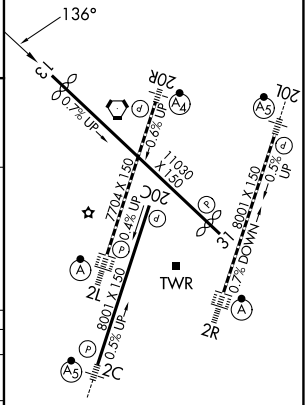


SE-1, 14 MAY 2026 to 11 JUN 2026

SE-1, 14 MAY 2026 to 11 JUN 2026



ELEV 599	<b>D</b>	TDZE 567
----------	----------	----------



CATEGORY	A	B	C	D
LNNAV/ VNAV DA	968-1½ 401 (400-1½)			
LNNAV MDA	1080-1	513 (500-1)	1080-1½ 513 (500-1½)	1080-1¾ 513 (500-1¾)
CIRCLING	1100-1 501 (600-1)	1120-1 521 (600-1)	1200-1¾ 601 (700-1¾)	1380-2½ 781 (800-2½)

HIRL all Rwys  
 TDZL/RCLS Rwys 2L and 2R  
 REIL Rwys 13, 20C, and 31