


APP CRS	Rwy Ldg	8000
201°	TDZE	551
	Apt Elev	599

RNAV (RNP) Z RWY 20L

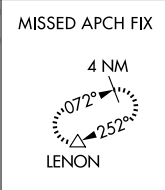
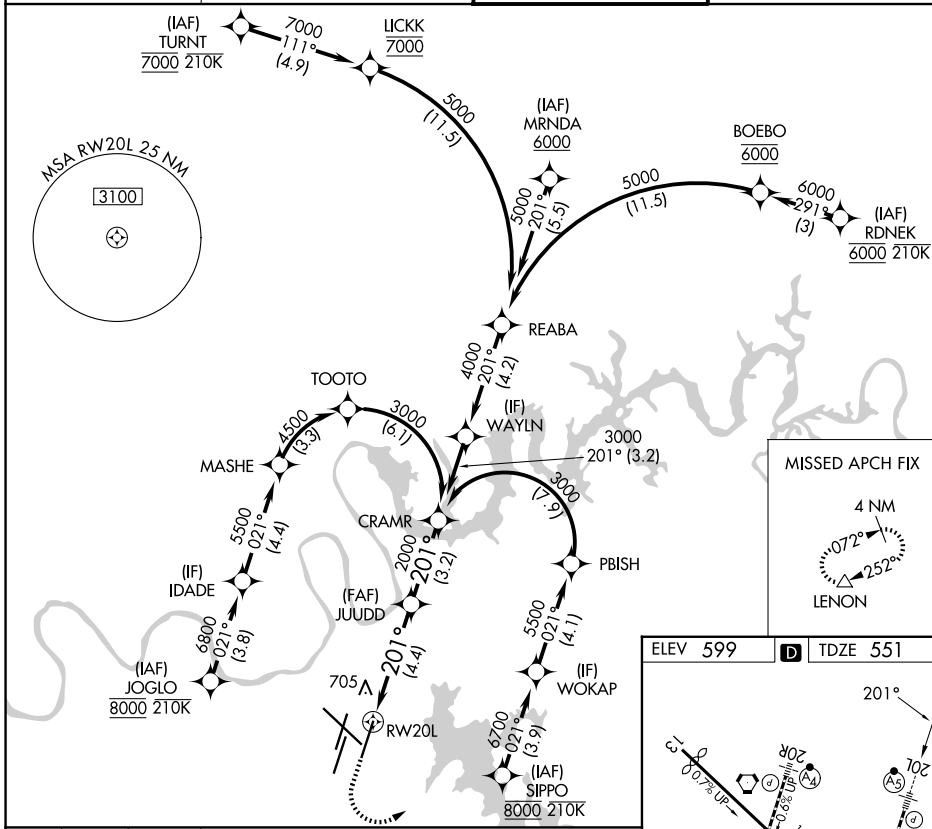
NASHVILLE INTL (BNA)

RNP AR APCH - GPS. Authorization required. From RDNEK, TURNT, JOGLO, or SIPPO: RF.

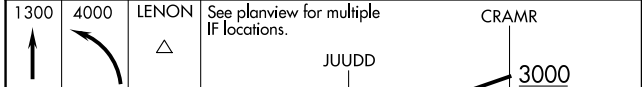
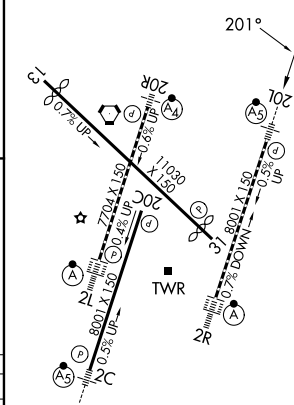
MALSR

 MISSED APPROACH: Climb to 1300 then climbing left turn to 4000 direct LENON and hold.




▼ For uncompensated Baro-VNAV systems, procedure NA below -10°C or above 54°C. Simultaneous approach authorized with Rwy 20R. For inop ALS, increase RNP 0.15 all Cats visibility to RVR 4000.

D-ATIS 135.1	NASHVILLE APP CON 118.4 360.7 (030°-196°) 119.35 372.0 (197°-029°)	NASHVILLE TOWER 118.6 257.8	GND CON 121.9 348.6
------------------------	--	---------------------------------------	-------------------------------



ELEV 599	D TDZE 551
----------	-------------------



1300	4000	LENON	See planview for multiple IF locations.	CRAMR
				
RW20L			4.4 NM	3.2 NM
			2000	3000
			201°	GP 3.00° TCH 55

CATEGORY	A	B	C	D
RNP 0.15 DA		801/24	250 (300-½)	
RNP 0.30 DA		975/40	424 (400-¾)	

AUTHORIZATION REQUIRED

HIRL all Rwys
 TDZL/RCLS Rwys 2L and 2R
 REIL Rwys 13, 20C, and 31

SE-1, 14 MAY 2026 to 11 JUN 2026

SE-1, 14 MAY 2026 to 11 JUN 2026