

RNAV (RNP) Z RWY 20R

NASHVILLE INTL (BNA)

APP CRS	Rwy Ldg	7702
201°	TDZE	578
	Apt Elev	599

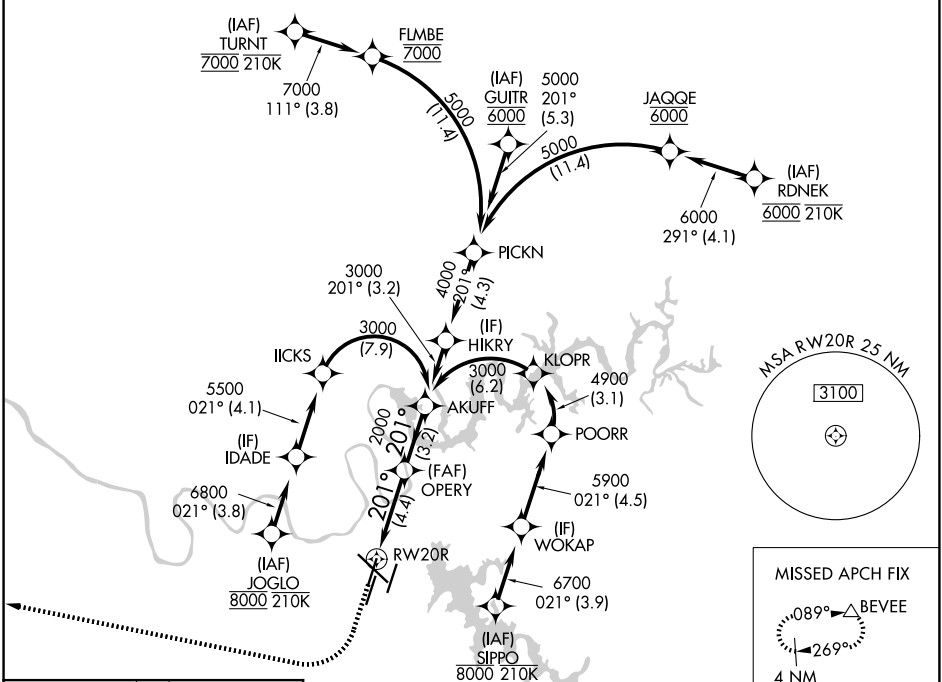
RNP AR APCH - GPS. Authorization required. From JAQQE, FLMBE, IICKS, POORR, or KLOPR: RF.

Simultaneous approach authorized with Rwy 20L. For uncompensated Baro-VNAV systems, procedure NA below -10°C or above 54°C. Inop table does not apply.

MALSF

MISSED APPROACH: Climb to 1200 then climbing right turn to 4000 direct BEVEE and hold.

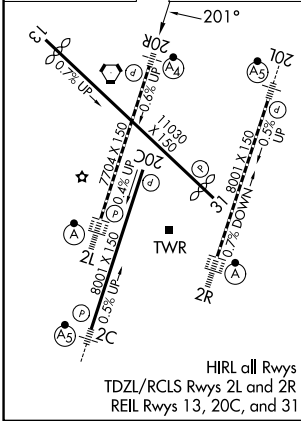
D-ATIS 135.1	NASHVILLE APP CON 118.4 360.7 (030°-196°) 119.35 372.0 (197°-029°)	NASHVILLE TOWER 118.6 257.8	GND CON 121.9 348.6
------------------------	--	---------------------------------------	-------------------------------



SE-1, 14 MAY 2026 to 11 JUN 2026

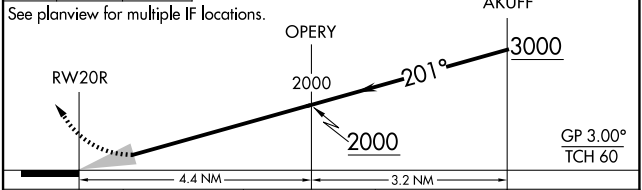
SE-1, 14 MAY 2026 to 11 JUN 2026

ELEV 599	D	TDZE 578
----------	----------	----------



1200 4000 BEVEE

VGSI and RNAV glidepath not coincident (VGSI Angle 3.00/TCH 79).



CATEGORY	A	B	C	D
RNP 0.13 DA		927/40	349 (400-¾)	
RNP 0.30 DA		1042/60	464 (500-1¼)	

AUTHORIZATION REQUIRED