

RNAV (RNP) Z RWY 2C

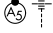
NASHVILLE INTL (BNA)

APP CRS	Rwy Ldg	7601
021°	TDZE	587
	Apt Elev	599

RNP APCH - GPS. Authorization required. From SITEE, JOVEE, LNWOD, RMSEY or MIGAN: RF.

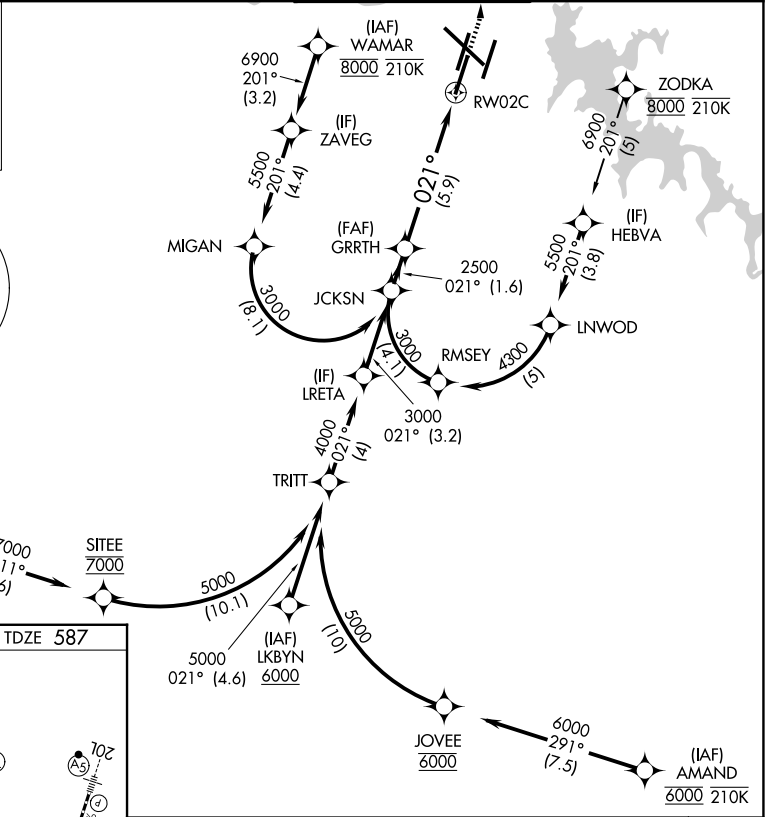
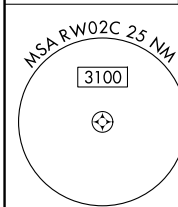
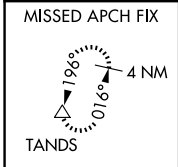
▼ For uncompensated Baro-VNAV systems, procedure NA below -10°C or above 54°C. Simultaneous approach authorized. For inop ALS, increase RNP 0.15 all Cats visibility to RVR 4500, increase RNP 0.30 all Cats visibility to 1½ SM.

MALSR

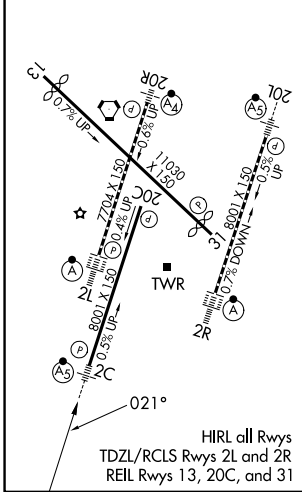


MISSED APPROACH: Climb to 1300 then climbing left turn to 4000 direct TANDS and hold.

D-ATIS	NASHVILLE APP CON	NASHVILLE TOWER	GND CON
135.1	118.4 360.7 (030°-196°) 119.35 372.0 (197°-029°)	118.6 257.8	121.9 348.6



ELEV 599	D	TDZE 587
----------	----------	----------



See planview for multiple IF locations.

	JCKSN	GRRTH	RW02C
	3000	2500	
	021°		
	2500		
	1.6 NM		5.9 NM
GP 3.00°	TCH 60		
CATEGORY	A	B	C
RNP 0.15 DA	852/24 265 (300-½)		
RNP 0.30 DA	1018/50 431 (500-1)		

AUTHORIZATION REQUIRED

SE-1, 14 MAY 2026 to 11 JUN 2026

SE-1, 14 MAY 2026 to 11 JUN 2026