

|             |          |             |
|-------------|----------|-------------|
| APP CRS     | Rwy Ldg  | <b>8000</b> |
| <b>021°</b> | TDZE     | <b>590</b>  |
|             | Apt Elev | <b>599</b>  |

# RNAV (RNP) Z RWY 2R

NASHVILLE INTL (BNA)

RNP AR APCH - GPS. Authorization required. From WAMAR, ZODKA, MUUSC, or AMAND: RF

▼ For uncompensated Baro-VNAV systems, procedure NA below -10°C or above 54°C. Simultaneous approach authorized with Rwy 2L/C. For inop ALS, increase RNP 0.15 all Cats visibility to RVR 5500 and RNP 0.3 all Cats visibility to 6000.

ALSF-2

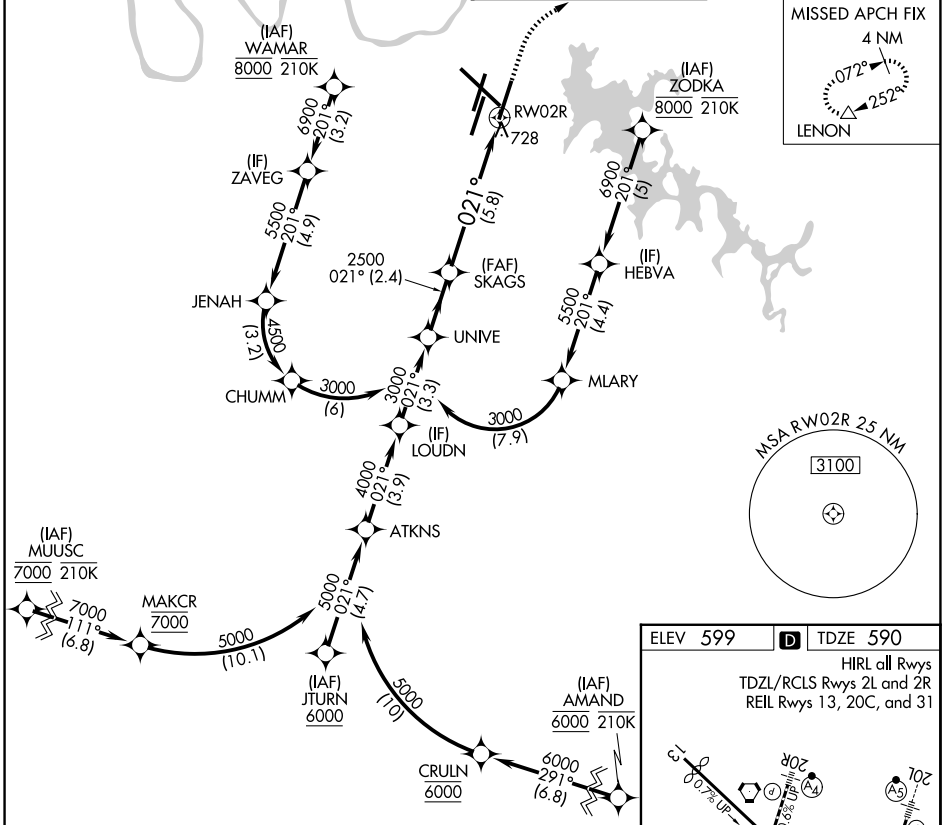
MISSED APPROACH: Climb to 1300 then climbing right turn to 4000 direct LENON and hold.

D-ATIS  
**135.1**

NASHVILLE APP CON  
**118.4 360.7** (030°-196°)  
**119.35 372.0** (197°-029°)

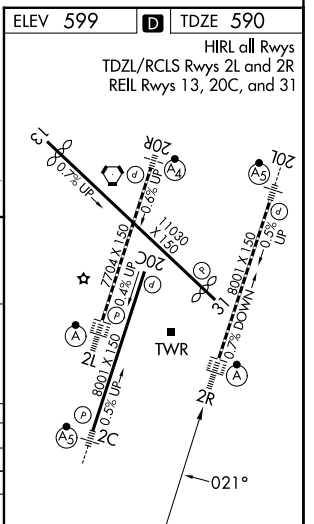
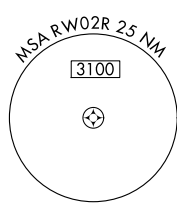
NASHVILLE TOWER  
**118.6 257.8**

GND CON  
**121.9 348.6**



SE-1, 14 MAY 2026 to 11 JUN 2026

SE-1, 14 MAY 2026 to 11 JUN 2026



See planview for multiple IF locations.

|             |          |        |   |      |       |
|-------------|----------|--------|---|------|-------|
|             | UNIV     | SKAGS  | 1300                                    | 4000 | LENON |
|             | 3000     | 2500   |   |      |       |
|             | 021°     |        |   |      |       |
|             | 2500     |        |   |      |       |
|             | GP 3.00° |        | TCH 55                                  |      |       |
|             | 2.4 NM   |        | 5.8 NM                                  |      |       |
| CATEGORY    | A        | B      | C                                       | D    |       |
| RNP 0.15 DA |          | 938/30 | 348 (400- <sup>3</sup> / <sub>4</sub> ) |      |       |
| RNP 0.30 DA |          | 994/40 | 404 (400- <sup>3</sup> / <sub>4</sub> ) |      |       |

**AUTHORIZATION REQUIRED**