

WAAS CH 49013 W20D	APP CRS 201°	Rwy Ldg TDZE 551 Apt Elev 599
--	------------------------	---

RNAV (GPS) Y RWY 20L

NASHVILLE INTL (BNA)

RNP APCH - GPS.

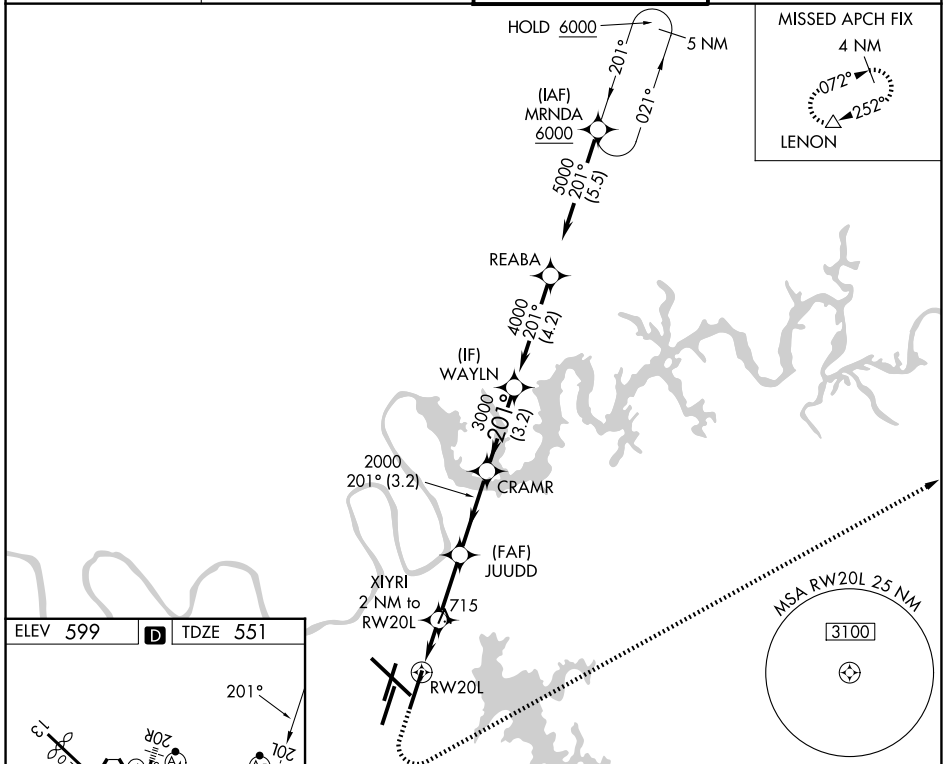
▽ For uncompensated Baro-VNAV systems, LNAV/VNAV NA below -10°C or above 54°C.
▲ Simultaneous approach authorized. Use of FD or AP required during simultaneous operations. LNAV procedure NA during simultaneous operations.
 *RVR 1800 authorized with use of FD or AP or HUD to DA.

MALSR

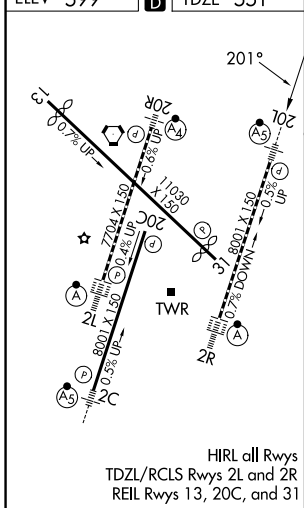


MISSED APPROACH:
 Climb to 1300, then climbing left turn to 4000 direct LENON and hold.

D-ATIS 135.1	NASHVILLE APP CON 118.4 360.7 (030°-196°) 119.35 372.0 (197°-029°)	NASHVILLE TOWER 118.6 257.8	GND CON 121.9 348.6
------------------------	--	---------------------------------------	-------------------------------



ELEV 599	D	TDZE 551
----------	----------	----------



	1300	4000	LENON	JUUDD	CRAMR	WAYLN	
			▲	2000	2000	4000	
			1.2 NM to RWY 20L	2 NM to RWY 20L			GP 3.00° TCH 55
			1.2 NM	0.8 NM	2.5 NM	3.2 NM	3.2 NM
CATEGORY	A		B		C		D
LPV DA*			751/24		200 (200-½)		
LNAV/VNAV DA			879/26		328 (300-½)		
LNAV MDA	980/24		429 (400-½)		980/40		429 (400-¾)
CIRCLING	1100-1 501 (600-1)		1120-1 521 (600-1)		1200-1¾ 601 (700-1¾)		1380-2½ 781 (800-2½)

SE-1, 14 MAY 2026 to 11 JUN 2026

SE-1, 14 MAY 2026 to 11 JUN 2026