

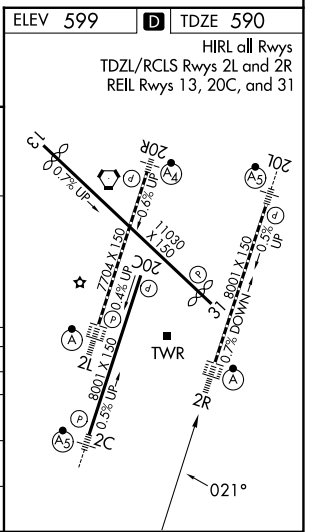
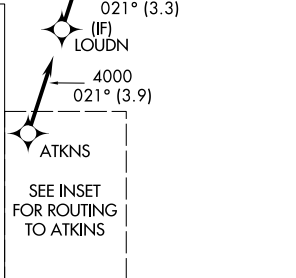
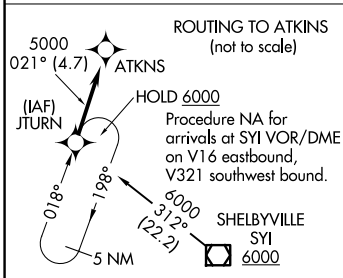
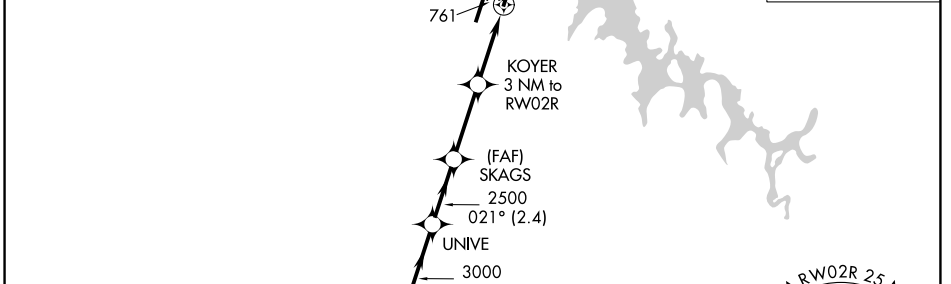
WAAS CH <b>93713</b> <b>W02D</b>	APP CRS <b>021°</b>	Rwy Ldg <b>8000</b> TDZE <b>590</b> Apt Elev <b>599</b>
--	------------------------	---

# RNAV (GPS) Y RWY 2R

NASHVILLE INTL (BNA)

RNP APCH - GPS	<p>For uncompensated Baro-VNAV systems, LNAV/VNAV NA below -10°C or above 54°C. Simultaneous approach authorized. Use of FD or AP required during simultaneous operations. LNAV procedure NA during simultaneous operations. For inop ALS increase LNAV/VNAV visibility all Cats to RVR 5500.</p>	<p>ALSF-2</p>	<p>MISSED APPROACH: Climb to 1300, then climbing right turn to 4000 direct LENON and hold.</p>
----------------	---	---------------	--

D-ATIS <b>135.1</b>	NASHVILLE APP CON <b>118.4 360.7</b> (030°-196°) <b>119.35 372.0</b> (197°-029°)	NASHVILLE TOWER <b>118.6 257.8</b>	GND CON <b>121.9 348.6</b>
------------------------	--	---------------------------------------	-------------------------------



	LOUDN	UNIVE	SKAGS	KOYER	LENON
	4000	3000	2500	1600	1300 4000
	GP 3.00° TCH 55				
	3.3 NM	2.4 NM	2.8 NM	1.8 NM	1.2 NM
CATEGORY	A	B	C	D	
LPV DA		790/18	200 (200-1/2)		
LNAV/VNAV DA		959/35	369 (400-3/4)		
LNAV MDA	1020/24	430 (500-1/2)	1020/40	430 (500-3/4)	
CIRCLING	1100-1 501 (600-1)	1120-1 521 (600-1)	1200-1 3/4 601 (700-1 3/4)	1380-2 1/2 781 (800-2 1/2)	

SE-1, 14 MAY 2026 to 11 JUN 2026

SE-1, 14 MAY 2026 to 11 JUN 2026