

RNAV 1 - DME/DME/IRU or GPS.
RADAR required.

(RYYMN, RYYMN3) 25275
RYMMN THREE ARRIVAL (RNAV) Transition Routes

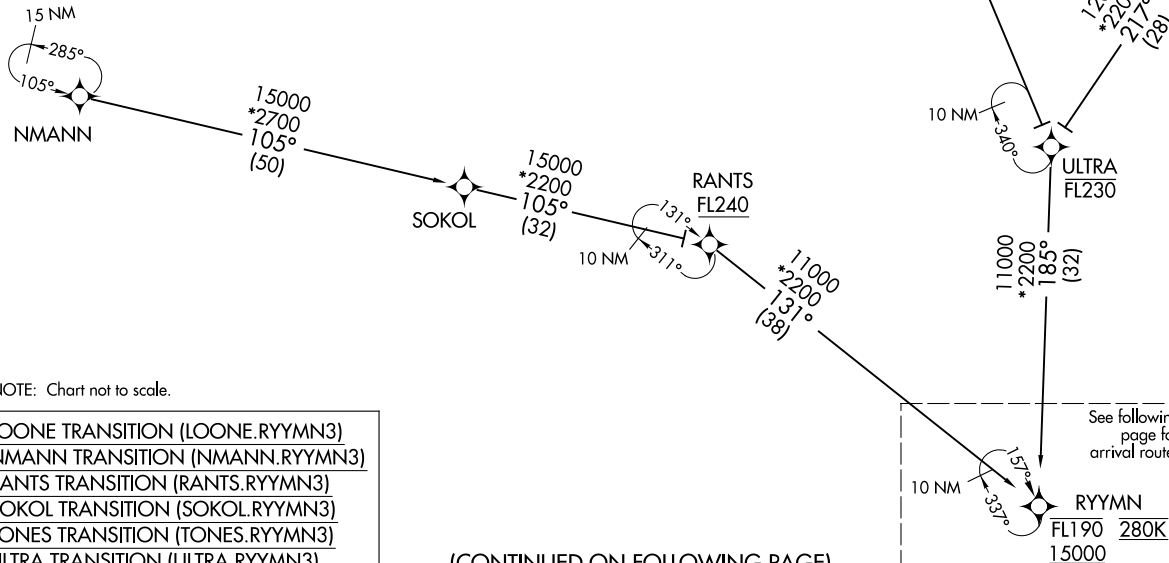
AL-282 (FAA)

NASHVILLE INTL (BNA)
NASHVILLE, TENNESSEE

NASHVILLE APP CON
119.35 372.0
D-ATIS
135.1



- NOTE: Jet aircraft only.
- NOTE: Landing north use Rwy 2L Transition, landing south use Rwy 20R Transition.
- NOTE: Expect to receive landing direction and descend via clearance from Memphis Center. Expect Rwy assignment from Nashville approach.
- NOTE: RANTS, ULTRA Transitions, ATC assigned only.



NOTE: Chart not to scale.

- LOONE TRANSITION (LOONE.RYYMN3)
- NMANN TRANSITION (NMANN.RYYMN3)
- RANTS TRANSITION (RANTS.RYYMN3)
- SOKOL TRANSITION (SOKOL.RYYMN3)
- TONES TRANSITION (TONES.RYYMN3)
- ULTRA TRANSITION (ULTRA.RYYMN3)

See following page for arrival routes

(CONTINUED ON FOLLOWING PAGE)

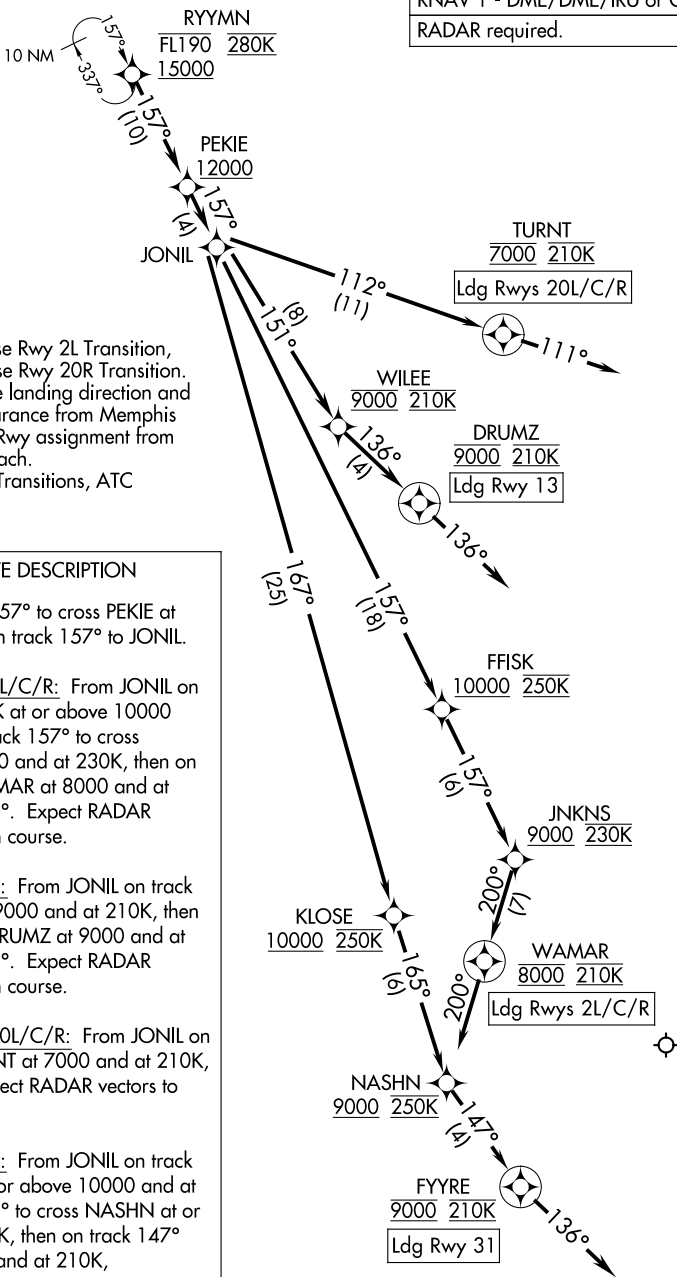
RYMMN THREE ARRIVAL (RNAV) Transition Routes
(RYYMN, RYYMN3) 020CT15

NASHVILLE, TENNESSEE
NASHVILLE INTL (BNA)

RYYMN THREE ARRIVAL (RNAV) Arrival Routes

NASHVILLE APP CON
119.35 372.0
D-ATIS
135.1

RNAV 1 - DME/DME/IRU or GPS.
RADAR required.



- NOTE: Jet aircraft only.
- NOTE: Landing north use Rwy 2L Transition, Landing south use Rwy 20R Transition.
- NOTE: Expect to receive landing direction and descend via clearance from Memphis Center. Expect Rwy assignment from Nashville approach.
- NOTE: RANTS, ULTRA Transitions, ATC assigned only.

ARRIVAL ROUTE DESCRIPTION

From RYYMN on track 157° to cross PEKIE at or above 12000, then on track 157° to JONIL.

LANDING RUNWAYS 2L/C/R: From JONIL on track 157° to cross FFISK at or above 10000 and at 250K, then on track 157° to cross JNKNS at or above 9000 and at 230K, then on track 200° to cross WAMAR at 8000 and at 210K, then on track 200°. Expect RADAR vectors to final approach course.

LANDING RUNWAY 13: From JONIL on track 151° to cross WILEE at 9000 and at 210K, then on track 136° to cross DRUMZ at 9000 and at 210K, then on track 136°. Expect RADAR vectors to final approach course.

LANDING RUNWAYS 20L/C/R: From JONIL on track 112° to cross TURNT at 7000 and at 210K, then on track 111°. Expect RADAR vectors to final approach course.

LANDING RUNWAY 31: From JONIL on track 167° to cross KLOSE at or above 10000 and at 250K, then on track 165° to cross NASHN at or above 9000 and at 250K, then on track 147° to cross FYRE at 9000 and at 210K, then on track 136°. Expect RADAR vectors to final approach course.

NOTE: Chart not to scale.

SE-1, 14 MAY 2026 to 11 JUN 2026

SE-1, 14 MAY 2026 to 11 JUN 2026

RYYMN THREE ARRIVAL (RNAV) Arrival Routes