

TAZMO FOUR DEPARTURE (RNAV)
(TAZMO4, TAZMO) 27NOV25

NASHVILLE, TENNESSEE
NASHVILLE INTL (BNA)

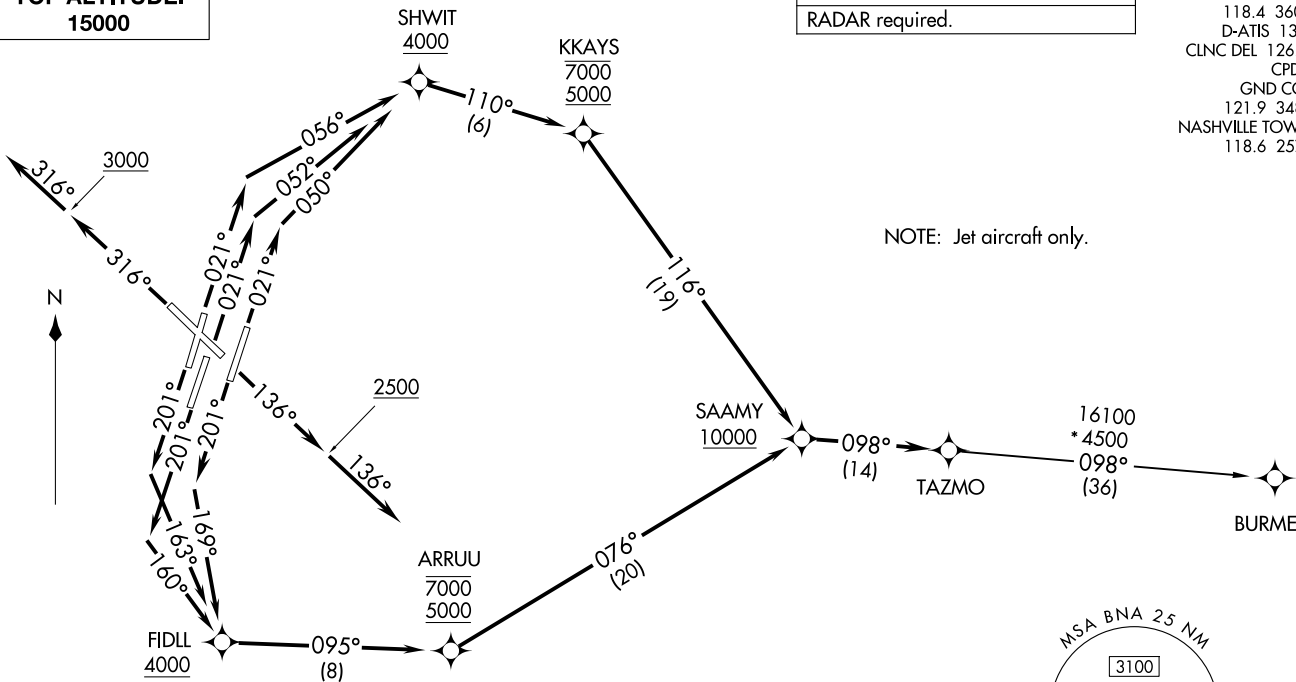
**TOP ALTITUDE:
15000**

RNAV 1 - DME/DME/IRU or GPS.
RADAR required.

NASHVILLE DEP CON
118.4 360.7
D-ATIS 135.1
CLNC DEL 126.05
CPDLC
GND CON
121.9 348.6
NASHVILLE TOWER
118.6 257.8

(TAZMO4, TAZMO) 25331
TAZMO FOUR DEPARTURE (RNAV)
AL-282 (FAA)

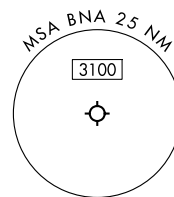
NASHVILLE INTL (BNA)
NASHVILLE, TENNESSEE



NOTE: Jet aircraft only.

TAKEOFF MINIMUMS:

- Rwy 13: Standard.
- Rwy 2L/C/R, 20L/C/R: Standard with minimum climb of 500' per NM to 1099.
- Rwy 31: Standard with minimum climb of 250' per NM to 3000



(CONTINUED ON FOLLOWING PAGE)

NOTE: Chart not to scale.

TAZMO FOUR DEPARTURE (RNAV)



DEPARTURE ROUTE DESCRIPTION

TAKEOFF RWY 2L: Climb on heading 021° to intercept course 056° to cross SHWIT at or above 4000, then on track 110° to cross KKAYS between 5000 and 7000, then on track 116° to cross SAAMY at or above 10000, thence....

TAKEOFF RWY 2C: Climb on heading 021° to intercept course 052° to cross SHWIT at or above 4000, then on track 110° to cross KKAYS between 5000 and 7000, then on track 116° to cross SAAMY at or above 10000, thence....

TAKEOFF RWY 2R: Climb on heading 021° to intercept course 050° to cross SHWIT at or above 4000, then on track 110° to cross KKAYS between 5000 and 7000, then on track 116° to cross SAAMY at or above 10000, thence....

TAKEOFF RWY 13: Climb on heading 136° to 2500, then on heading 136° or as assigned by ATC for RADAR vectors to cross SAAMY at or above 10000, thence....

TAKEOFF RWY 20L: Climb on heading 201° to intercept course 169° to cross FIDLL at or above 4000, then on track 095° to cross ARRUU between 5000 and 7000, then on track 076° to cross SAAMY at or above 10000, thence....

TAKEOFF RWY 20C: Climb on heading 201° to intercept course 160° to cross FIDLL at or above 4000, then on track 095° to cross ARRUU between 5000 and 7000, then on track 076° to cross SAAMY at or above 10000, thence....

TAKEOFF RWY 20R: Climb on heading 201° to intercept course 163° to cross FIDLL at or above 4000, then on track 095° to cross ARRUU between 5000 and 7000, then on track 076° to cross SAAMY at or above 10000, thence....

TAKEOFF RWY 31: Climb on heading 316° to 3000, then on heading 316° or as assigned by ATC for RADAR vectors to cross SAAMY at or above 10000, thence....

....on track 098° to TAZMO. Maintain 15000. Expect filed altitude ten (10) minutes after departure.

BURME TRANSITION (TAZMO4.BURME)