

(TIPPN4.TIPPN) 25331

AL-282 (FAA)

NASHVILLE INTL (BNA)
NASHVILLE, TENNESSEE

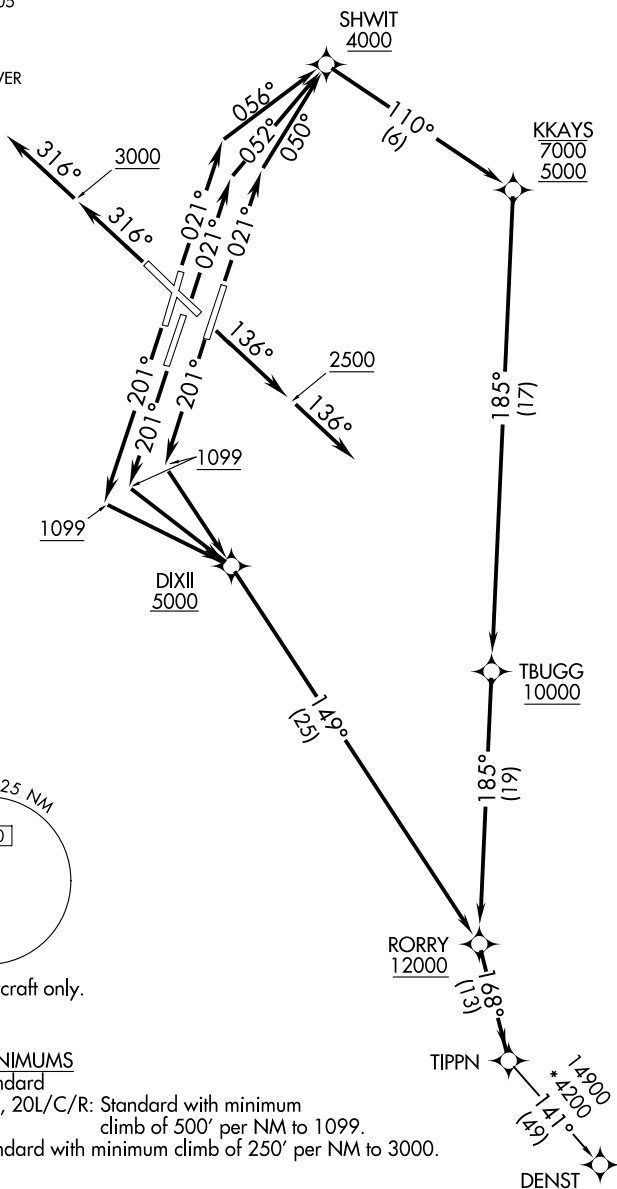
TIPPN FOUR DEPARTURE (RNAV)

NASHVILLE DEP CON
118.4 360.7
D-ATIS 135.1
CLNC DEL 126.05
CPDLC
GND CON
121.9 348.6
NASHVILLE TOWER
118.6 257.8

RNAV 1-DME/DME/IRU or GPS.

RADAR required.

TOP ALTITUDE:
15000



NOTE: Jet aircraft only.

TAKEOFF MINIMUMS

Rwy 13: Standard

Rwys 2L/C/R, 20L/C/R: Standard with minimum climb of 500' per NM to 1099.

Rwy 31: Standard with minimum climb of 250' per NM to 3000.

(CONTINUED ON FOLLOWING PAGE)

NOTE: Chart not to scale.

TIPPN FOUR DEPARTURE (RNAV)

(TIPPN4.TIPPN) 27NOV25

NASHVILLE, TENNESSEE
NASHVILLE INTL (BNA)

SE-1, 14 MAY 2026 to 11 JUN 2026

SE-1, 14 MAY 2026 to 11 JUN 2026

TIPPN FOUR DEPARTURE (RNAV)



DEPARTURE ROUTE DESCRIPTION

TAKEOFF RUNWAY 2L: Climb on heading 021° to intercept course 056° to cross SHWIT at or above 4000, then on track 110° to cross KKAYS between 5000 and 7000, then on track 185° to cross TBUGG at or above 10000, then on track 185° to cross RORRY at or above 12000, thence...

TAKEOFF RUNWAY 2C: Climb on heading 021° to intercept course 052° to cross SHWIT at or above 4000, then on track 110° to cross KKAYS between 5000 and 7000, then on track 185° to cross TBUGG at or above 10000, then on track 185° to cross RORRY at or above 12000, thence...

TAKEOFF RUNWAY 2R: Climb on heading 021° to intercept course 050° to cross SHWIT at or above 4000, then on track 110° to cross KKAYS between 5000 and 7000, then on track 185° to cross TBUGG at or above 10000, then on track 185° to cross RORRY at or above 12000, thence...

TAKEOFF RUNWAY 13: Climb on heading 136° to 2500, then on heading 136° or as assigned by ATC for RADAR vectors to cross RORRY at or above 12000, thence...

TAKEOFF RUNWAY 20L/C/R: Climb on heading 201° to 1099, then direct to cross DIXII at or above 5000, then on track 149° to cross RORRY at or above 12000, thence...

TAKEOFF RUNWAY 31: Climb on heading 316° to 3000, then on heading 316° or as assigned by ATC for RADAR vectors to cross RORRY at or above 12000, thence...

...on track 168° to TIPPN. Maintain 15000. Expect filed altitude 10 minutes after departure.

DENST TRANSITION (TIPPN4.DENST)

SE-1, 14 MAY 2026 to 11 JUN 2026

SE-1, 14 MAY 2026 to 11 JUN 2026