

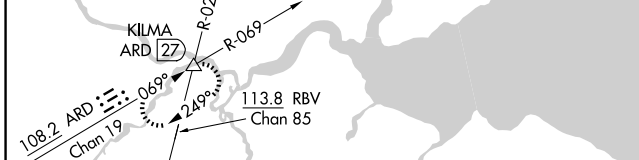
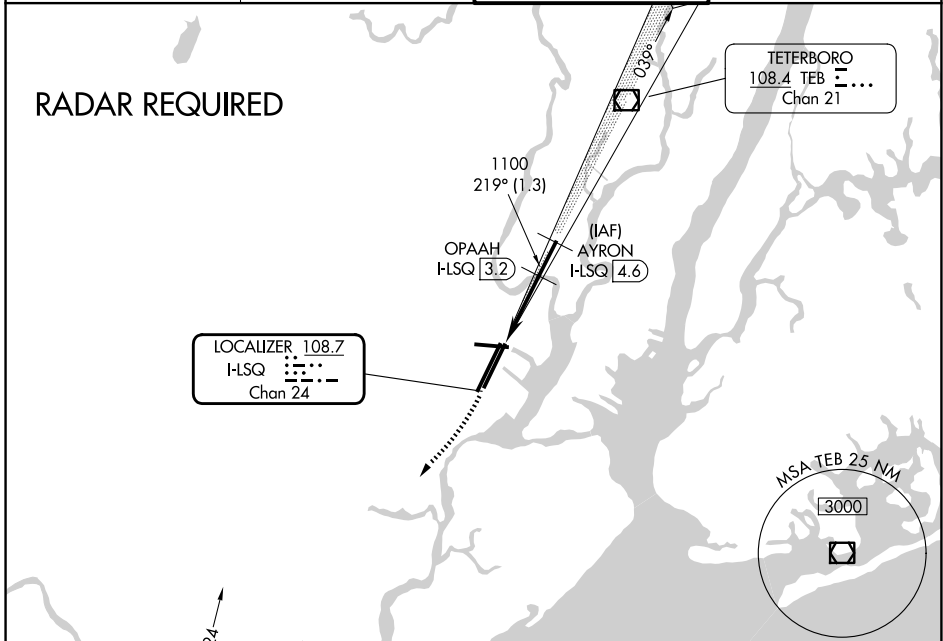
LOC/DME I-LSQ 108.7 Chan 24	APP CRS 219°	Rwy Ldg 8205 TDZE 11 Apt Elev 18
-------------------------------------------------	------------------------	-------------------------------------------------------------

COPTER ILS/DME RWY 22L

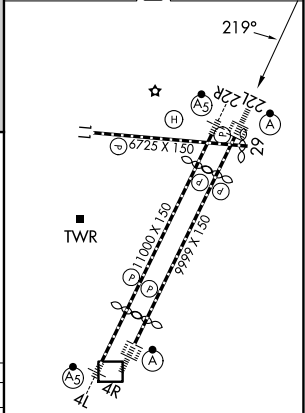
NEWARK LIBERTY INTL (EWR)

	MISSED APPROACH: Climbing right turn to 2000 heading 225° then climbing right turn to 3000 via ARD R-069 to KILMA INT and hold.		
	D-ATIS 115.7 134.825	NEWARK APP CON 128.55 379.9	NEWARK TOWER 118.3 257.6

D-ATIS 115.7 134.825	NEWARK APP CON 128.55 379.9	NEWARK TOWER 118.3 257.6	GND CON 121.8
--------------------------------	---------------------------------------	------------------------------------	-------------------------



ELEV 18	D	TDZE 11
---------	---	---------



2000 hdg 225°	3000	ARD R-069	KILMA △	VGSI and ILS glidepath not coincident (VGSI Angle 3.00/TCH 60). OPAAH I-LSQ 3.2 AYRON I-LSQ 4.6
H-LSQ 0.2	H-LSQ 1.7	1091	219°	1500
1.5 NM		1.5 NM		1.3 NM
GS 3.00° HCH 43				

CATEGORY	COPTER		
H-ILS 22L	211/12	200	(200-¼)
H-LOC 22L	560/12	549	(600-¼)

HIRL all rwys
REIL Rwys 11, 22R, and 29
TDZL/RCLS all rwys

COPTER ILS/DME RWY 22L

NE-2, 14 MAY 2026 to 11 JUN 2026

NE-2, 14 MAY 2026 to 11 JUN 2026