

LOC/DME I-EWR <b>110.75</b> Chan <b>44(Y)</b>	APP CRS <b>039°</b>	Rwy Ldg <b>8459</b> TDZE <b>10</b> Apt Elev <b>17</b>
---	------------------------	---

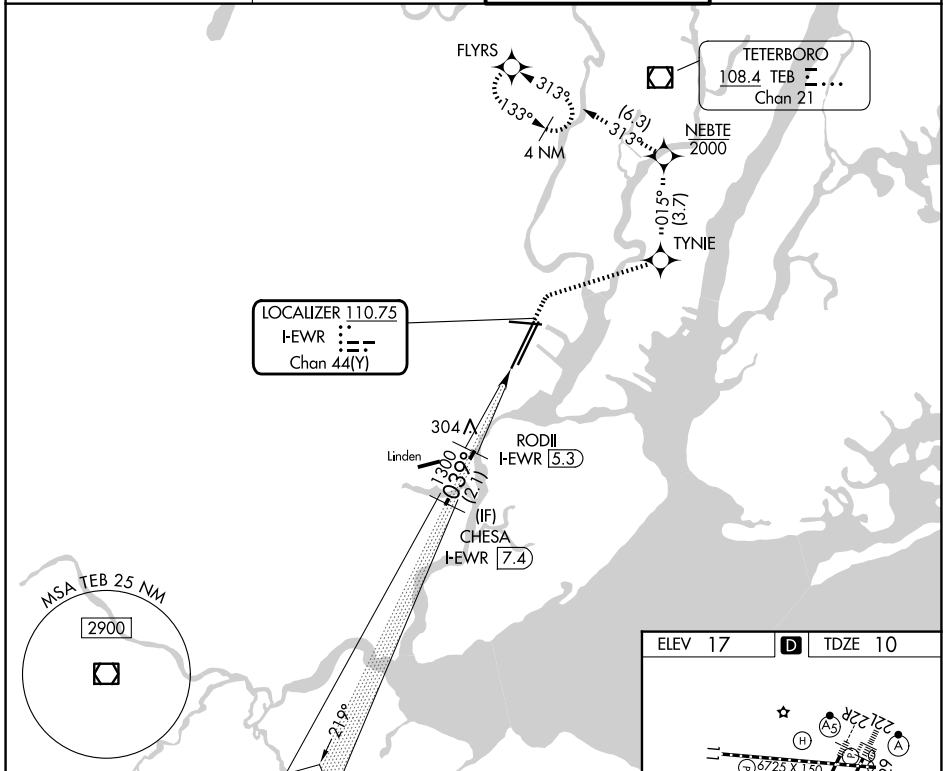
# COPTER ILS Y or LOC Y RWY 4L

NEWARK LIBERTY INTL (EWR)

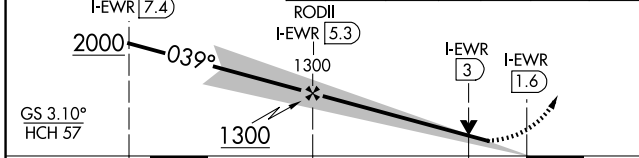
RNP APCH - GPS.	MALSR 
DME and RADAR required.	

MISSED APPROACH: Climb to 520, then climbing right turn to 2000 direct TYNIE, then on track 015° to NEBTE, cross NEBTE at or below 2000, then climbing left turn to 3000 on track 313° to FLYRS and hold.

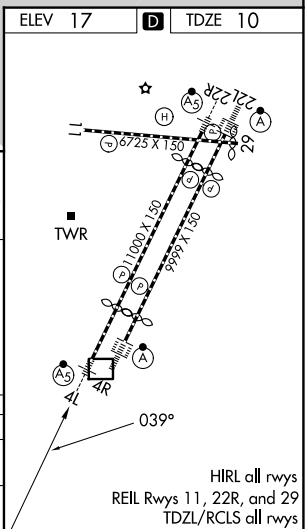
D-ATIS <b>115.7 134.825</b>	NEWARK APP CON <b>128.55 379.9</b>	NEWARK TOWER <b>118.3 257.6</b>	GND CON <b>121.8</b>
--------------------------------	---------------------------------------	------------------------------------	-------------------------



VGSI and ILS glidepath not coincident (VGSI Angle 3.10/TCH 77).	520	2000	TYNIE	tr 015°	NEBTE 2000	3000	FLYRS
---	-----	------	-------	---------	------------	------	-------



CATEGORY	COPTER	
H-ILS 4L	210/12	200 (200-¼)
H-LOC 4L	560/12	550 (600-¼)



NE-2, 14 MAY 2026 to 11 JUN 2026

NE-2, 14 MAY 2026 to 11 JUN 2026