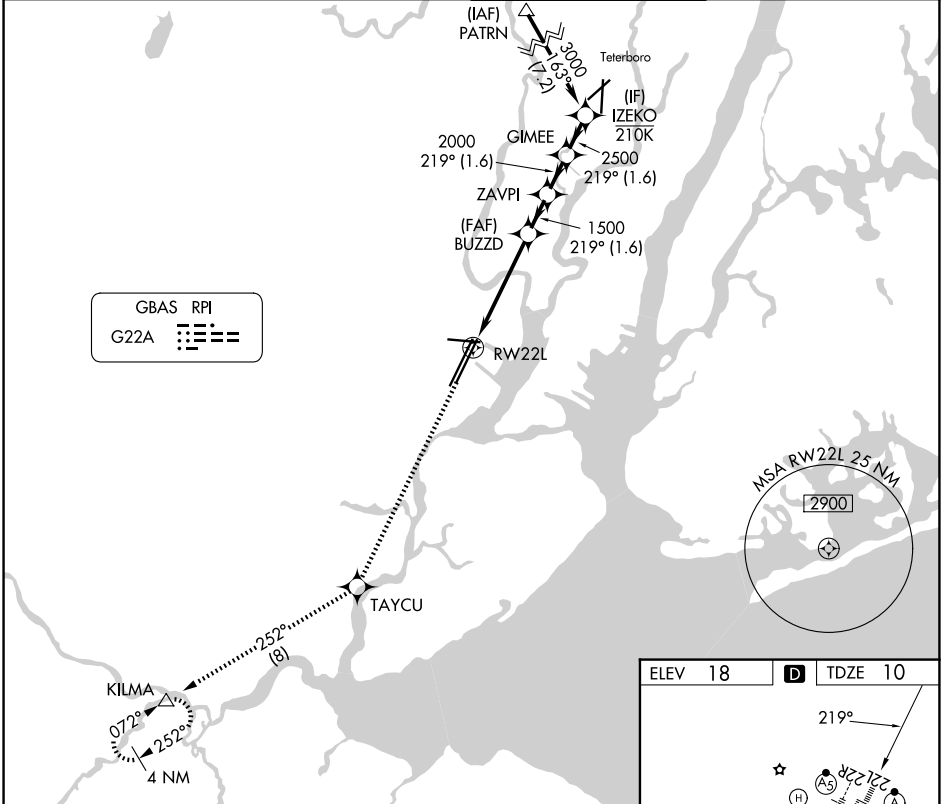


GLS RWY 22L

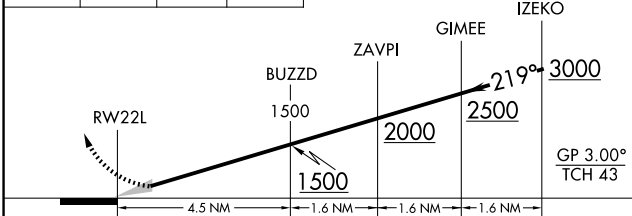
NEWARK LIBERTY INTL (EWR)

GBAS CH 21494 G22A	APP CRS 219°	Rwy Ldg TDZE 10 Apt Elev 18	8205
--	------------------------	---	-------------

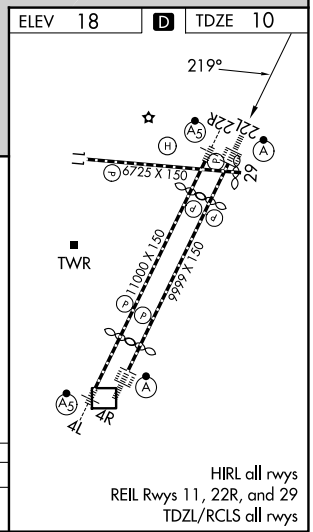
RNP APCH - GPS.	ALSF-2	MISSED APPROACH: Climb to 3000 direct TAYCU and on track 252° to KILMA and hold.	
Autopilot coupled approach NA below 210.			
Caution, departing TEB Rwy 24 traffic climbing to 1500' MSL.			
D-ATIS 115.7 134.825	NEWARK APP CON 128.55 379.9	NEWARK TOWER 118.3 257.6	GND CON 121.8



3000	TAYCU	KILMA	VGSI and GLS glidepath not coincident (VGSI Angle 3.00/TCH 60).
↑	✦	△	
	tr 252°		



CATEGORY	A	B	C	D
GLS DA		210/18	200 (200-1/2)	



HIRL all rwys
REIL Rwy 11, 22R, and 29
TDZL/RCLS all rwys

NE-2, 14 MAY 2026 to 11 JUN 2026

NE-2, 14 MAY 2026 to 11 JUN 2026

GLS RWY 22L