

GBAS CH 22727 G04A	APP CRS 039°	Rwy Ldg 8459 TDZE 10 Apt Elev 17
--	------------------------	---

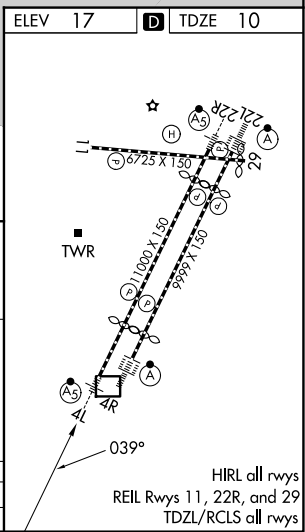
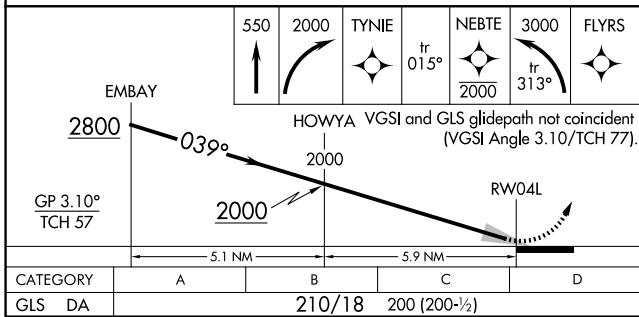
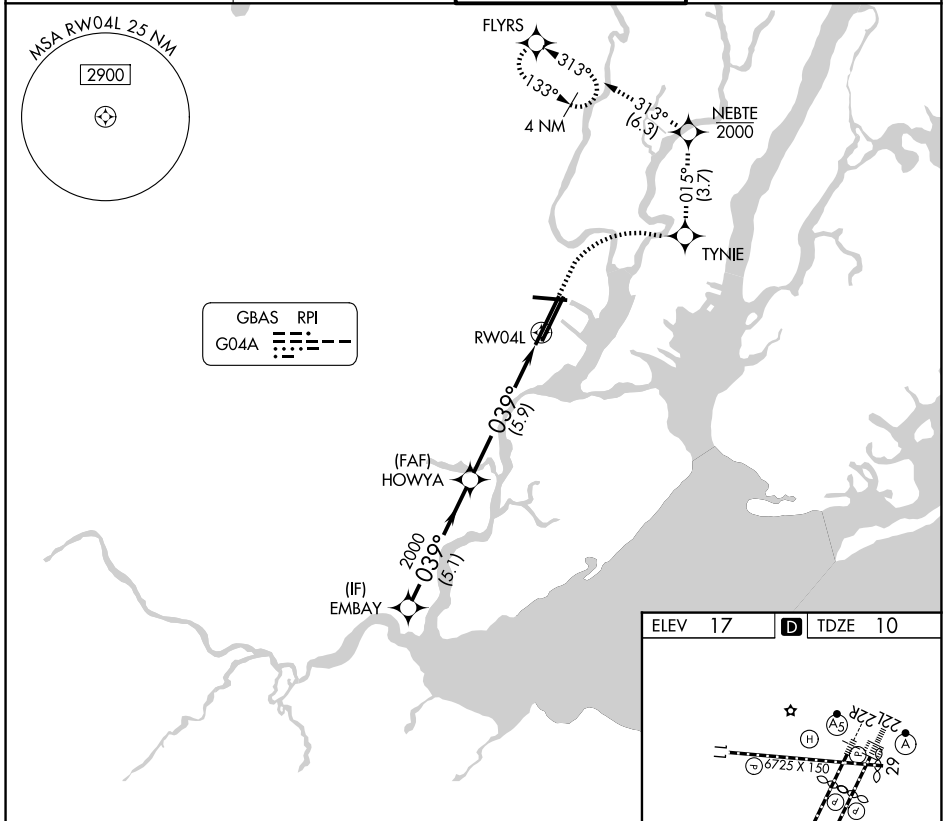
GLS RWY 4L

NEWARK LIBERTY INTL (EWR)

RNP APCH - GPS.
RADAR required.
⚠ NA Autopilot coupled approach NA below 210.

MALSRL
MISSED APPROACH: (Do not exceed 210K until NEBTE) Climb to 550 then climbing right turn to 2000 direct TYNIE and on track 015° to NEBTE, cross NEBTE at or below 2000 then climbing left turn to 3000 on track 313° to FLYRS and hold, continue climb-in-hold to 3000.

D-ATIS 115.7 134.825	NEWARK APP CON 128.55 379.9	NEWARK TOWER 118.3 257.6	GND CON 121.8
--------------------------------	---------------------------------------	------------------------------------	-------------------------



NE-2, 14 MAY 2026 to 11 JUN 2026

NE-2, 14 MAY 2026 to 11 JUN 2026