

LOC/DME I-LSQ 108.7 Chan 24	APP CRS 219°	Rwy Ldg 8205 TDZE 10 Apt Elev 18
---	------------------------	---

ILS RWY 22L (CAT II & III)

NEWARK LIBERTY INTL (EWR)

RNP APCH - GPS. From PATRN.

DME required. Aircraft not GPS equipped - RADAR required for procedure entry.

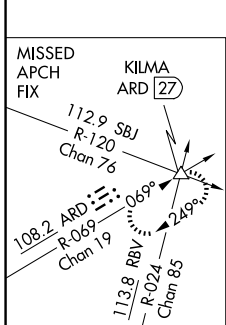
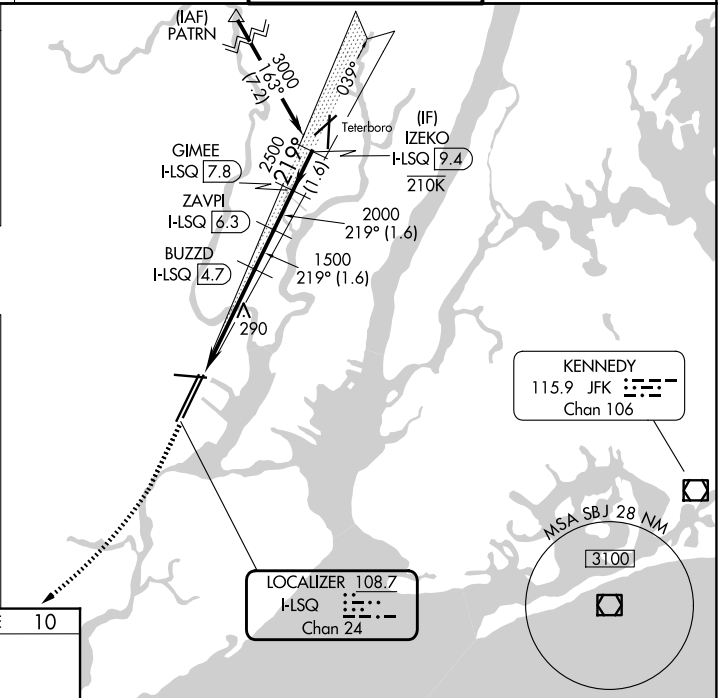
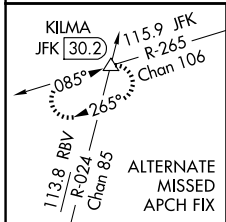
ALSF-2

MISSED APPROACH: Climb to 500 then climbing right turn to 3000 on heading 225° and ARD VOR/DME R-069 to KILMA INT/ARD 27 DME and hold.

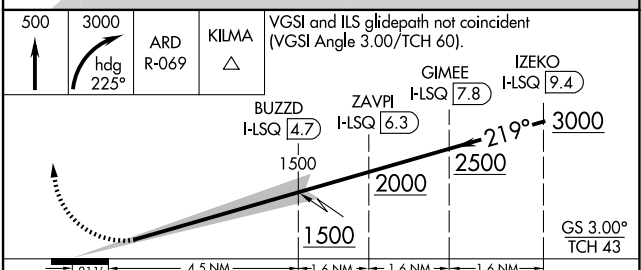
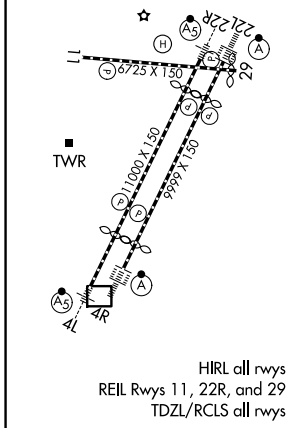
▼ CAT II: RVR 1000 authorized with specific OPSPEC, MSPEC, or LOA approval and use of autoland or HUD to touchdown. Caution, departing TEB Rwy 24 traffic climbing to 1500' MSL.



D-ATIS 115.7 134.825	NEWARK APP CON 128.55 379.9	NEWARK TOWER 118.3 257.6	GND CON 121.8
--------------------------------	---------------------------------------	------------------------------------	-------------------------



ELEV 18	D	TDZE 10
---------	----------	---------



CATEGORY	A	B	C	D
S-ILS 22L	CAT II RA 100/14 100 DA 110			
S-ILS 22L	CAT III RVR 06			

CATEGORY II & III ILS - SPECIAL AIRCREW & AIRCRAFT CERTIFICATION REQUIRED

NE-2, 14 MAY 2026 to 11 JUN 2026

NE-2, 14 MAY 2026 to 11 JUN 2026