

LOC/DME I-GPR 109.15 Chan 28 (Y)	APP CRS 107°	Rwy Ldg 6725 TDZE 17 Apt Elev 17
---	------------------------	---

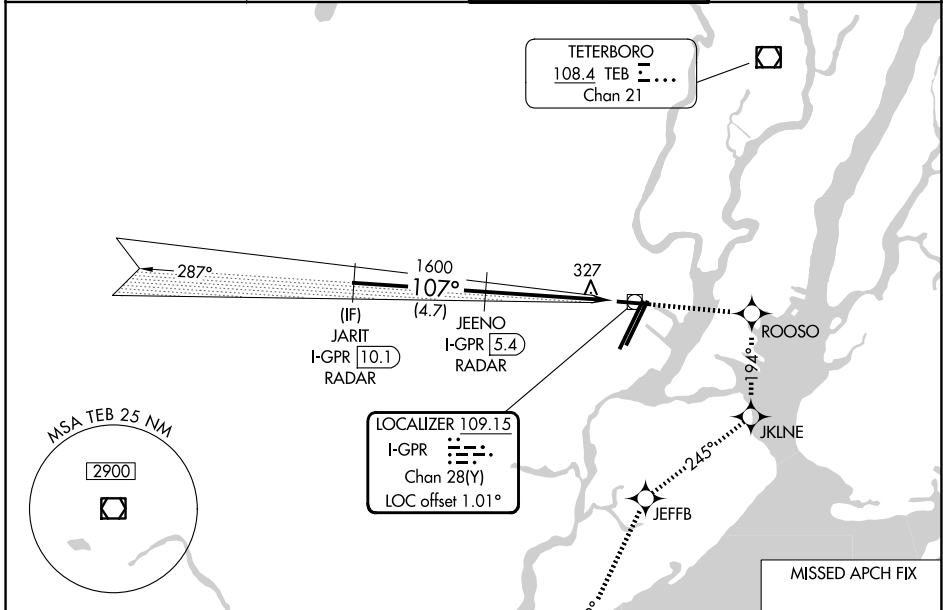
ILS or LOC RWY 11

NEWARK LIBERTY INTL (EWR)

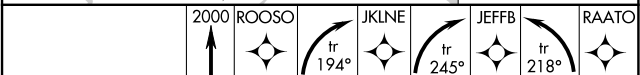
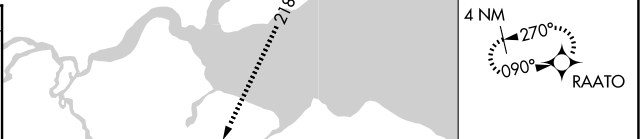
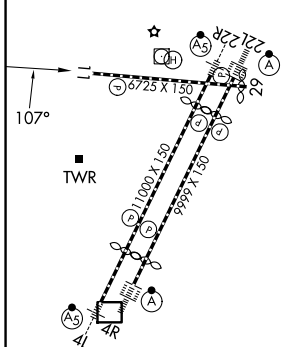
RNP APCH - GPS.
DME required. RADAR required.
 ⚠ Circling NA south of Rwy 11-29. When Circling to Rwy 29 at night, operational VGSI required, remain on or above VGSI glidepath until threshold. Rwy 11 helicopter visibility reduction below ¼ SM NA.

MISSED APPROACH: (Do not exceed 230K until JKLINE)
Climb to 2000 direct ROOSO and right turn on track 194° to JKLINE and right turn on track 245° to JEFFB and left turn on track 218° to RAATO and hold.

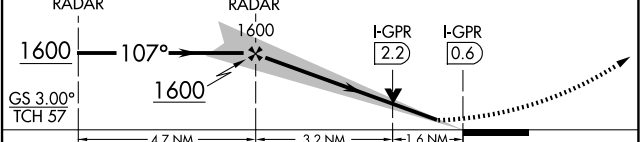
D-ATIS 115.7 134.825	NEWARK APP CON 128.55 379.9	NEWARK TOWER 118.3 257.6	GND CON 121.8
--------------------------------	---------------------------------------	------------------------------------	-------------------------



ELEV 17	D	TDZE 17
---------	----------	---------



JARIT I-GPR 10.1 RADAR, JEENO I-GPR 5.4 RADAR. VGSI and ILS glidepath not coincident (VGSI Angle 3.00/TCH 60).



CATEGORY	A	B	C	D
S- ILS 11	618-1¾ 601 (700-1¾)			
S- LOC 11	660/55	643 (700-1)	660-1⅝	643 (700-1⅝)
CIRCLING	660-1	643 (700-1)	900-2½ 883 (900-2½)	900-2¾ 883 (900-2¾)

NE-2, 14 MAY 2026 to 11 JUN 2026

NE-2, 14 MAY 2026 to 11 JUN 2026