

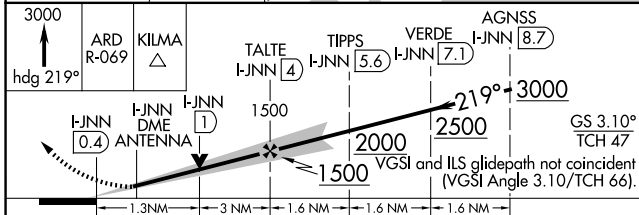
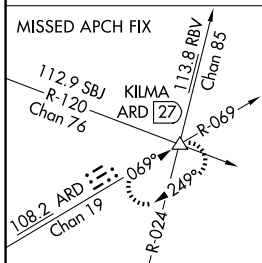
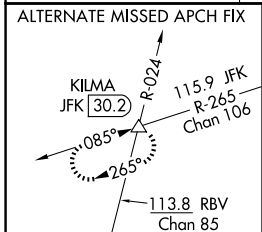
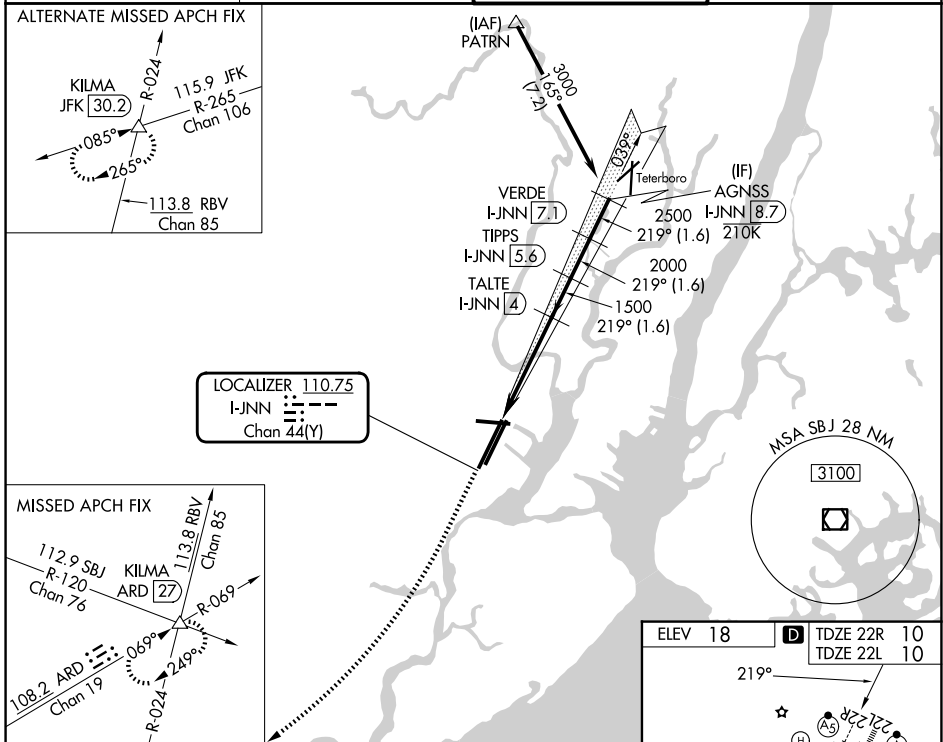
LOC/DME I-JNN 110.75 Chan 44(Y)	APP CRS 219°	Rwy Ldg 22R 22L 9559 8205
		TDZE 10 10
		Apt Elev 18 18

ILS or LOC RWY 22R

NEWARK LIBERTY INTL (EWR)

RNP APCH - GPS. From PATRN.		22R MALSR	22L ALSF-2	MISSED APPROACH: Climb to 3000 on heading 219° and ARD VOR/DME R-069 to KLIMA INT/ARD 27 DME and hold.
DME required. Aircraft not GPS equipped - RADAR required for procedure entry.				
<p>⚠ Circling NA south of Rwy 11-29. When Circling to Rwy 29 at night, operational VGSI required, remain on or above VGSI glidepath until threshold. For inop ALS, increase S-LOC 22R Cat C/D visibility to 1$\frac{1}{2}$ SM. Caution, departing TEB Rwy 24 traffic climbing to 1500' MSL.</p>				

D-ATIS 115.7 134.825	NEWARK APP CON 128.55 379.9	NEWARK TOWER 118.3 257.6	GND CON 121.8
--------------------------------	---------------------------------------	------------------------------------	-------------------------



ELEV 18	TDZE 22R 10	TDZE 22L 10			
HIRL all rwys					
REIL Rws 11, 22R, and 29					
TDZL/RCLS all rwys					
FAF to MAP 4.4 NM					
Knots	60	90	120	150	180
Min:Sec	4:24	2:56	2:12	1:46	1:28

NE-2, 14 MAY 2026 to 11 JUN 2026

NE-2, 14 MAY 2026 to 11 JUN 2026