

LOC/DME I-EWR	APP CRS	Rwy Ldg	8459
110.75	039°	TDZE	10
Chan 44 (Y)		Apt Elev	17

ILS Z RWY 4L (SA CAT I & II)

NEWARK LIBERTY INTL (EWR)

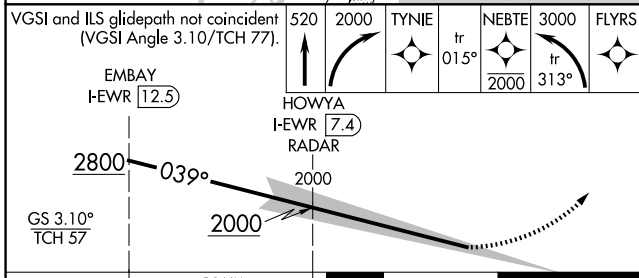
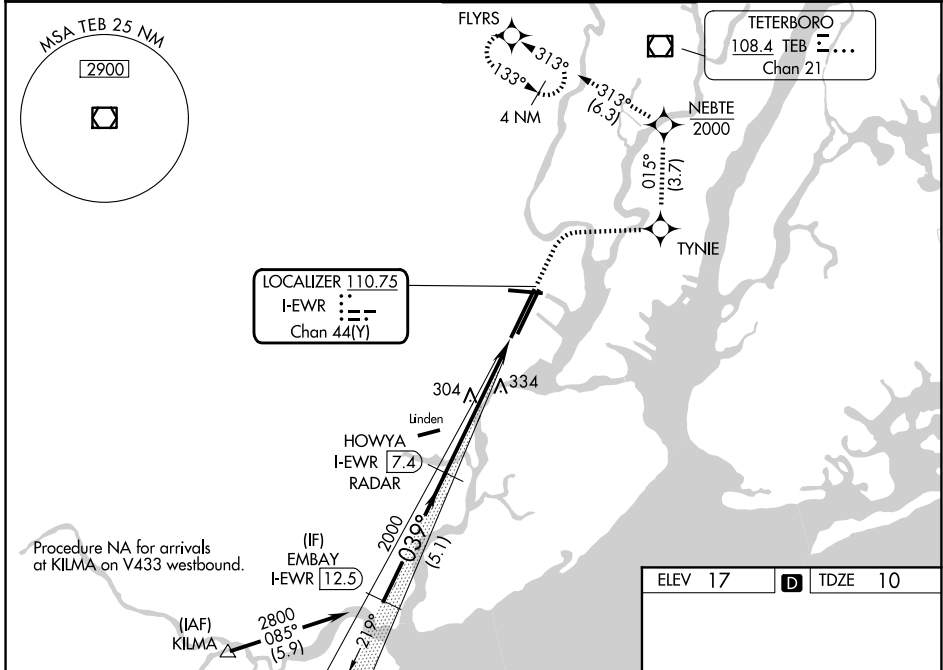
RNP APCH - GPS.
 DME and RADAR required.

SA CAT I: Requires specific OPSPEC, MSPEC, or LOA approval and use of HUD to DH.
 SA CAT II: Reduced lighting: requires specific OPSPEC, MSPEC, or LOA approval and use of autoland or HUD to touchdown.

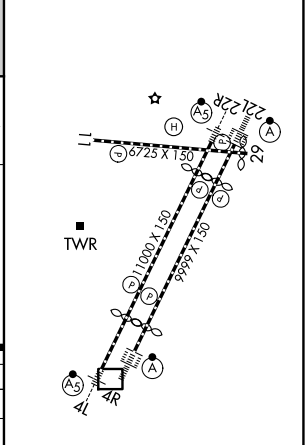
MALSRS

MISSED APPROACH: (Do not exceed 210K until NEBTE) Climb to 520, then climbing right turn to 2000 direct TYNIE and on track 015° to NEBTE, cross NEBTE at or below 2000, then climbing left turn to 3000 on track 313° to FLYRS and hold, continue climb-in-hold to 3000.

D-ATIS	NEWARK APP CON	NEWARK TOWER	GND CON
115.7 134.825	128.55 379.9	118.3 257.6	121.8



ELEV 17	TDZE 10
---------	---------



CATEGORY	A	B	C	D
S-ILS 4L	SA CAT I	RA 150/14	150	DA 160
S-ILS 4L	SA CAT II	RA 100/12	100	DA 110

SA CATEGORY I & II ILS - SPECIAL AIRCREW & AIRCRAFT CERTIFICATION REQUIRED

HIRL all rwys
 REIL Rws 11, 22R, and 29
 TDZL/RCLS all rwys

NE-2, 14 MAY 2026 to 11 JUN 2026

NE-2, 14 MAY 2026 to 11 JUN 2026