

PENNS TWO ARRIVAL

NE-2, 14 MAY 2026 to 11 JUN 2026

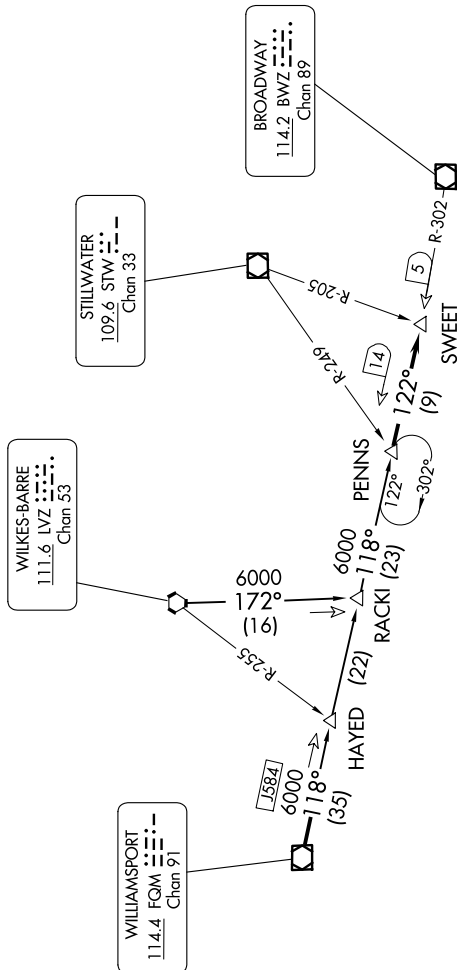
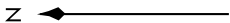
NEWARK APP CON
127.6 379.9
D-ATIS
115.7 134.825

WILKES-BARRE
111.6 LVZ
Chan 53

WILLIAMSPORT
114.4 FQM
Chan 91

STILLWATER
109.6 STW
Chan 33

BROADWAY
114.2 BWZ
Chan 89



ARRIVAL ROUTE DESCRIPTION

WILKES-BARRE TRANSITION (LVZ.PENNS2): From over LVZ
 VORTAC via R-172 to RACKI INT, then via FQM R-118 to
 PENNS INT. Thence
 WILLIAMSPORT TRANSITION (FQM.PENNS2): From over FQM
 VOR/DME via FQM R-118 to PENNS INT. Thence
 From over PENNS INT via BWZ VOR/DME R-302 to SWEET
 INT. Expect radar vectors to final approach course.

NOTE: This STAR is applicable to non-jet aircraft
 filed less than 250K landing Newark Liberty
 Intl airport.

NOTE: Chart not to scale.

NE-2, 14 MAY 2026 to 11 JUN 2026

PENNS TWO ARRIVAL