

APP CRS	Rwy Ldg	<b>6725</b>
<b>108°</b>	TDZE	<b>17</b>
	Apt Elev	<b>17</b>

# RNAV (GPS) RWY 11

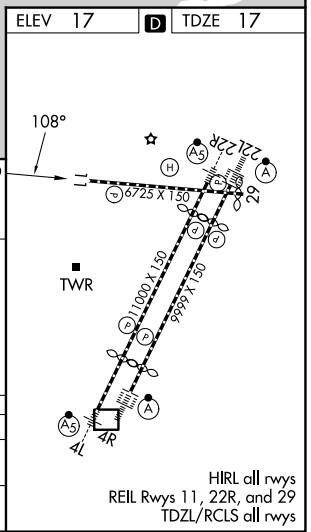
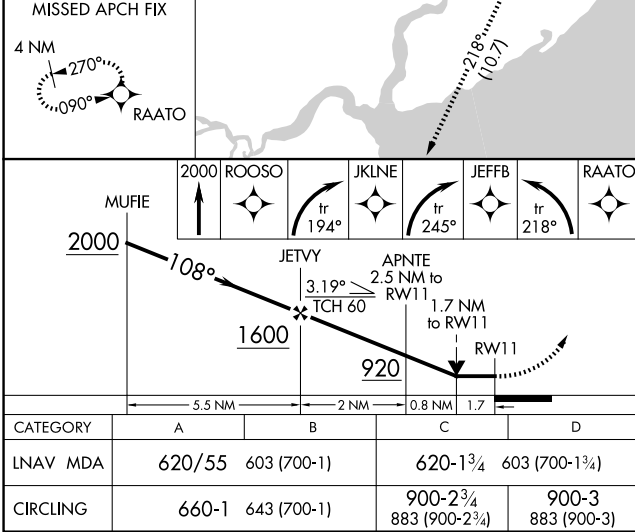
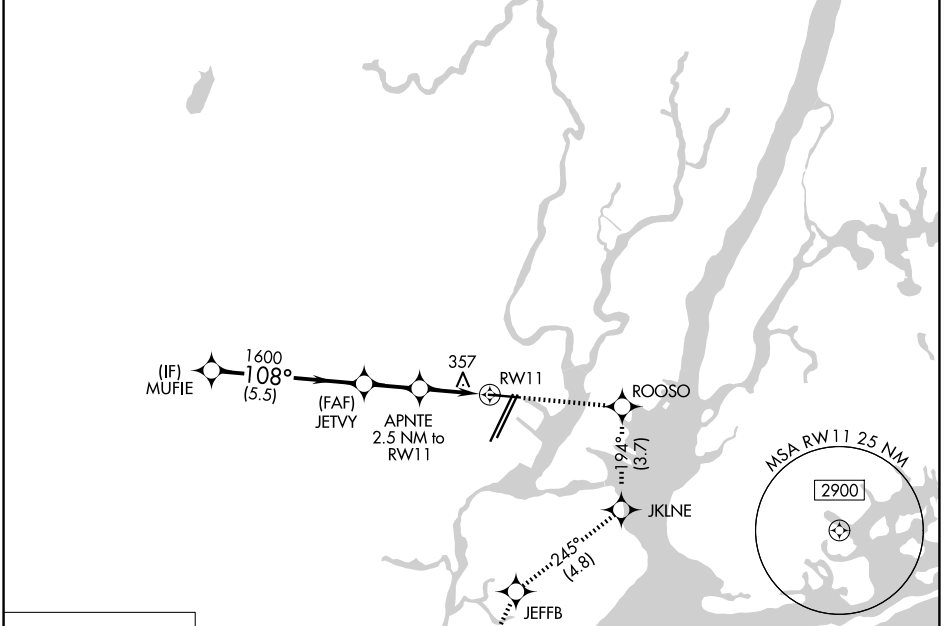
NEWARK LIBERTY INTL (EWR)

RNP APCH - GPS.

**▼** Circling NA south of Rwy 11-29. When Circling to Rwy 29 at night, operational VGSJ required, remain on or above VGSJ glidepath until threshold. Rwy 11 helicopter visibility reduction below RVR 4000 NA.

**▲** MISSED APPROACH: (Do not exceed 230K until JKLNE) Climb to 2000 direct ROOSO and right turn on track 194° to JKLINE and right turn on track 245° to JEFFB and left turn on track 218° to RAATO and hold.

D-ATIS	NEWARK APP CON	NEWARK TOWER	GND CON
<b>115.7 134.825</b>	<b>128.55 379.9</b>	<b>118.3 257.6</b>	<b>121.8</b>



NE-2, 14 MAY 2026 to 11 JUN 2026

NE-2, 14 MAY 2026 to 11 JUN 2026

HIRL all rwy's  
REIL Rwy's 11, 22R, and 29  
TDZL/RCLS all rwy's