

WAAS CH 61244 W22B	APP CRS 219°	Rwy Ldg TDZE 10 Apt Elev 18
--	------------------------	---

RNAV (GPS) RWY 22R

NEWARK LIBERTY INTL (EWR)

RNP APCH - GPS.

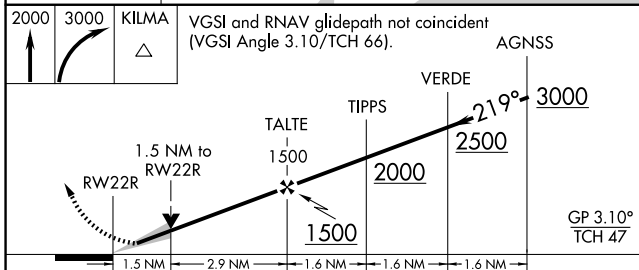
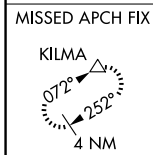
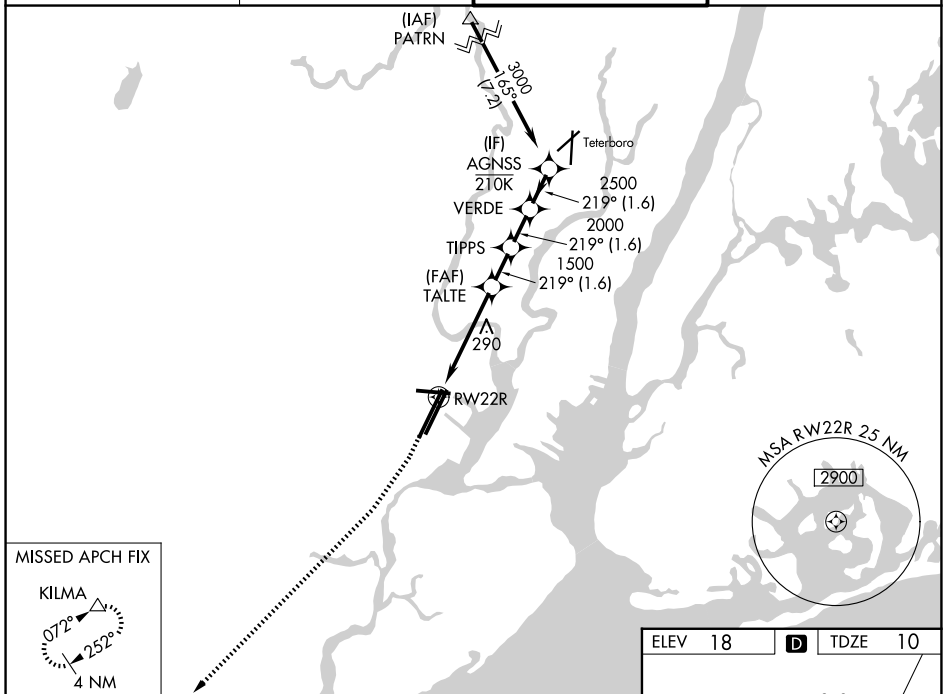
⚠ For uncompensated Baro-VNAV systems, LNAV/VNAV NA below -11°C or above 54°C. Circling NA south of Rwy 11-29. When Circling to Rwy 29 at night, operational VGSI required, remain on or above VGSI glidepath until threshold. Caution, departing TEB Rwy 24 traffic climbing to 1500 MSL.

MALSR

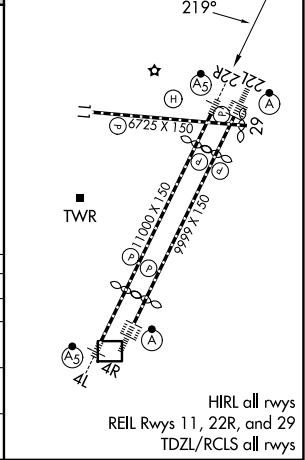


MISSED APPROACH: Climb to 2000 then climbing right turn to 3000 direct KILMA and hold.

D-ATIS 115.7 134.825	NEWARK APP CON 128.55 379.9	NEWARK TOWER 118.3 257.6	GND CON 121.8
--------------------------------	---------------------------------------	------------------------------------	-------------------------



ELEV 18	D	TDZE 10
---------	----------	---------



CATEGORY	A	B	C	D
LPV DA		210/18	200 (200-½)	
LNAV/VNAV DA		468/45	458 (500-¾)	
LNAV MDA	560/24	550 (600-½)	560/60	550 (600-1¼)
CIRCLING	660-1	642 (700-1)	900-2¾ 882 (900-2¾)	900-3 882 (900-3)

NE-2, 14 MAY 2026 to 11 JUN 2026

NE-2, 14 MAY 2026 to 11 JUN 2026

HIRL all rwys
REIL Rws 11, 22R, and 29
TDZL/RCLS all rwys