

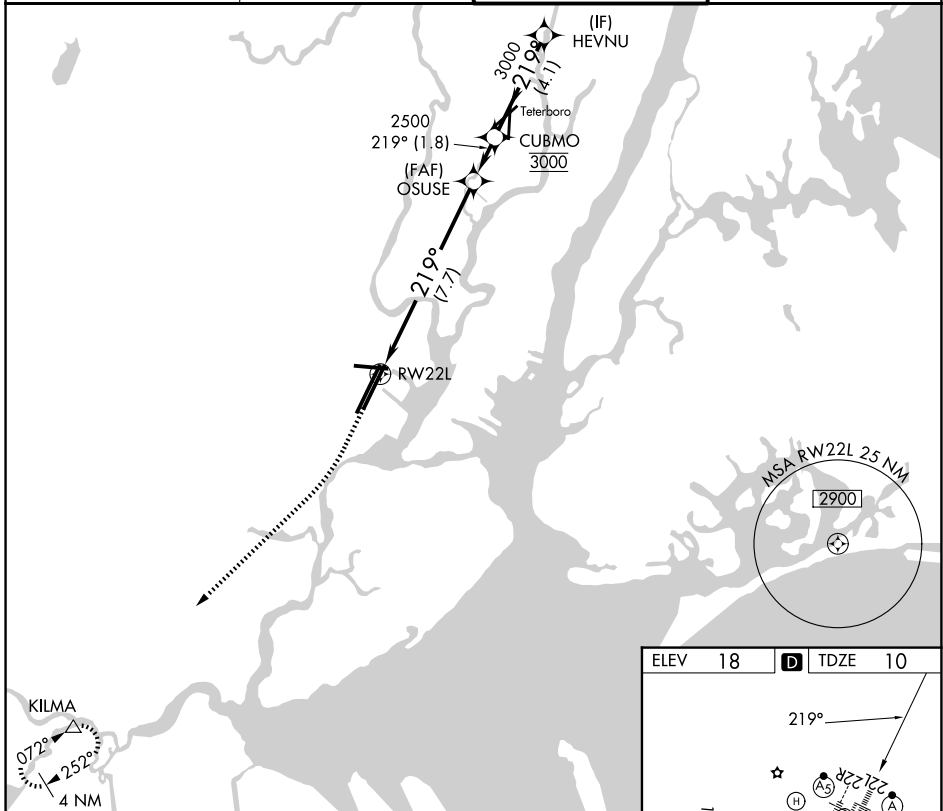
RNAV (RNP) Y RWY 22L

NEWARK LIBERTY INTL (EWR)

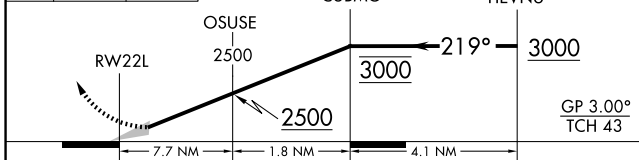
APP CRS	Rwy Ldg	8205
219°	TDZE	10
	Apt Elev	18

RNP AR APCH - GPS.	ALSF-2	MISSED APPROACH: Climb to 600 then climbing right turn to 3000 direct KILMA and hold.
▼ For uncompensated Baro-VNAV systems, procedure NA below -11°C or above 54°C. Caution, departing TEB Rwy 24 traffic climbing to 1500 feet MSL.		

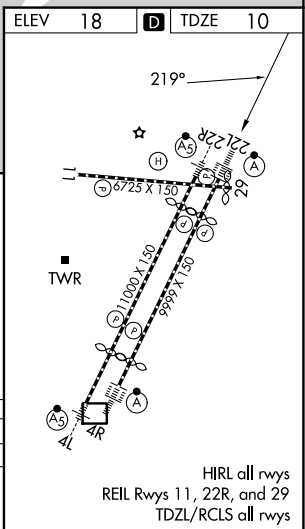
D-ATIS 115.7 134.825	NEWARK APP CON 128.55 379.9	NEWARK TOWER 118.3 257.6	GND CON 121.8
--------------------------------	---------------------------------------	------------------------------------	-------------------------



600	3000	KILMA	VGSI and RNAV glidepath not coincident (VGSI Angle 3.00/TCH 60).
↑	↘	△	



CATEGORY	A	B	C	D
RNP 0.30 DA	461/45		451 (500-7%)	



HIRL all rwys
REIL Rws 11, 22R, and 29
TDZL/RCLS all rwys

AUTHORIZATION REQUIRED

RNAV (RNP) Y RWY 22L

NE-2, 14 MAY 2026 to 11 JUN 2026

NE-2, 14 MAY 2026 to 11 JUN 2026