

RNAV (RNP) Y RWY 29

NEWARK LIBERTY INTL (EWR)

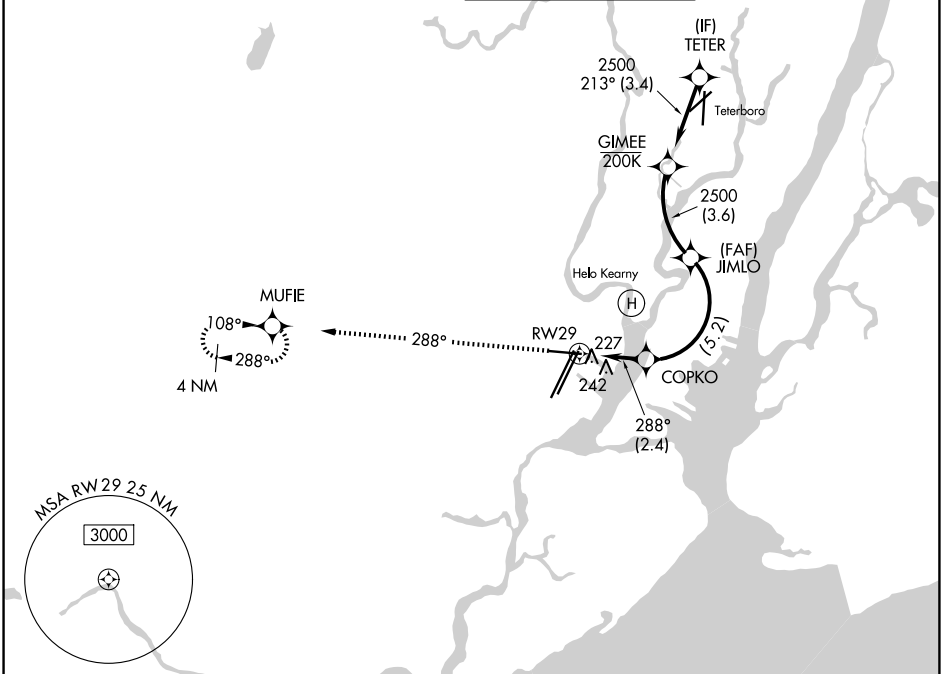
APP CRS	Rwy Ldg	6501
288°	TDZE	10
	Apt Elev	18

RNP AR APCH. RF required.

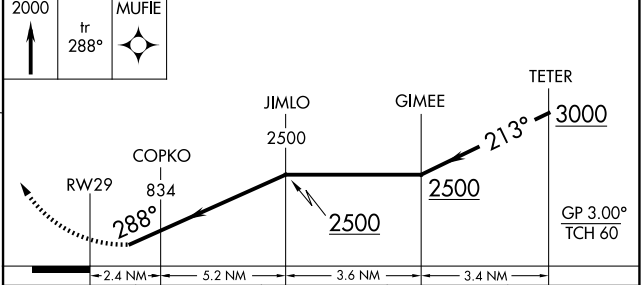
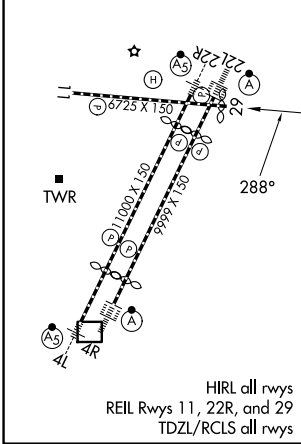
▼ For uncompensated Baro-VNAV systems, procedure NA below -12°C or above 54°C. Caution, departing TEB Rwy 24 traffic climbing to 1500' MSL. Straight-In Rwy 29 at night, operational VGSI required, remain on or above VGSI glidepath until threshold.

MISSED APPROACH: Climb to 2000 on track 288° to MUFIE and hold. *Missed approach requires minimum climb of 417 feet per NM to 800.

D-ATIS 115.7 134.825	NEWARK APP CON 128.55 379.9	NEWARK TOWER 118.3 257.6	GND CON 121.8
--------------------------------	---------------------------------------	------------------------------------	-------------------------



ELEV	18	D	TDZE	10
------	-----------	----------	------	-----------



CATEGORY	A	B	C	D
RNP 0.16 DA		461-1 ³ / ₈	451 (500-1 ³ / ₈)	
RNP 0.30 DA*		583-1 ⁵ / ₈	573 (600-1 ⁵ / ₈)	
RNP 0.30 DA		625-1 ³ / ₄	615 (700-1 ³ / ₄)	

AUTHORIZATION REQUIRED

NE-2, 14 MAY 2026 to 11 JUN 2026

NE-2, 14 MAY 2026 to 11 JUN 2026