

APP CRS	Rwy Ldg	8809
039°	TDZE	11
	Apt Elev	17

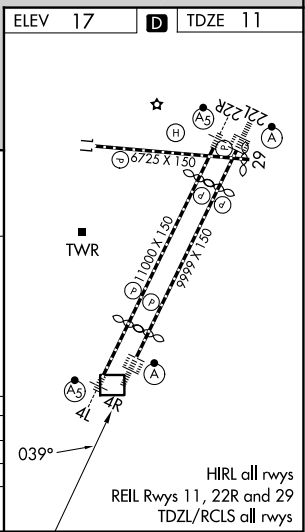
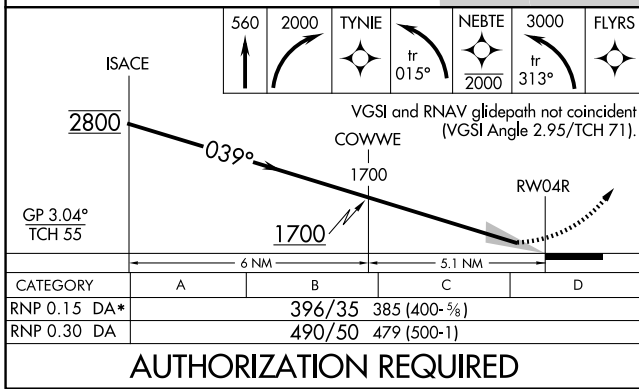
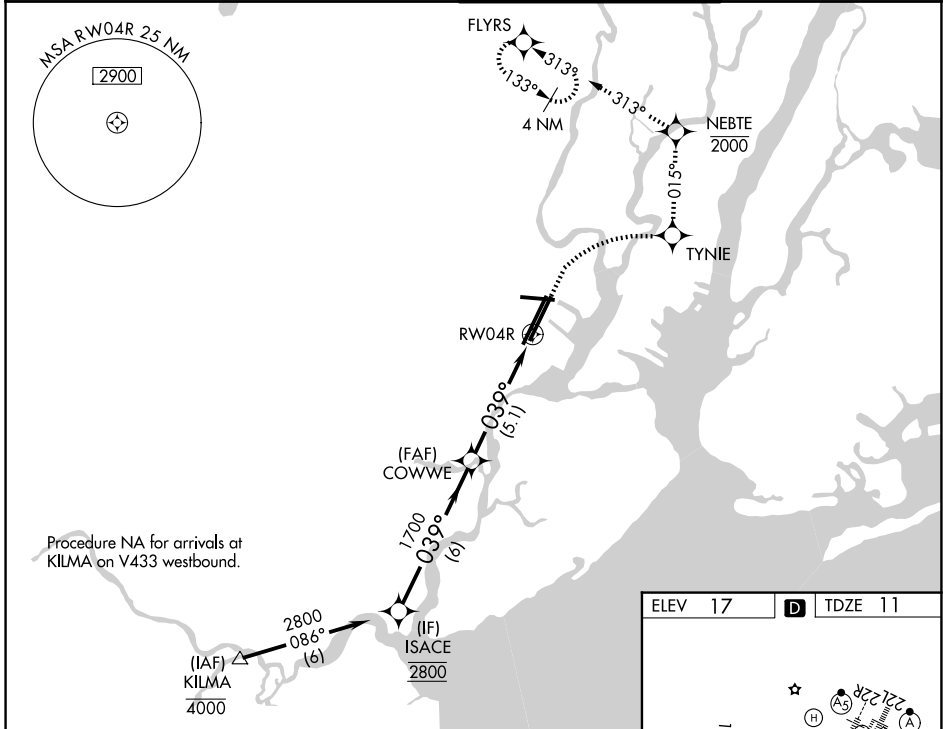
RNAV (RNP) Z RWY 4R

NEWARK LIBERTY INTL (EWR)

RNP AR APCH.
 RADAR required.
 For uncompensated Baro-VNAV systems, procedure NA below -12°C or above 54°C. For inop ALS, increase RNP 0.30 all Cats visibility to 1 1/2 SM.

ALSF-2
 MISSED APPROACH: (Do not exceed 210K until NEBTE) Climb to 560 then climbing right turn to 2000 direct TYNIE and left turn on track 015° to NEBTE, cross NEBTE at or below 2000 then dimbing left turn to 3000 on track 313° to FLYRS and hold, continue climb-in-hold to 3000.
 * Missed approach requires minimum climb of 351 feet per NM to 660.

D-ATIS 115.7 134.825	NEWARK APP CON 128.55 379.9	NEWARK TOWER 118.3 257.6	GND CON 121.8
--------------------------------	---------------------------------------	------------------------------------	-------------------------



AUTHORIZATION REQUIRED

RNAV (RNP) Z RWY 4R

NE-2, 14 MAY 2026 to 11 JUN 2026

NE-2, 14 MAY 2026 to 11 JUN 2026