

RNAV (GPS) W RWY 29

NEWARK LIBERTY INTL (EWR)

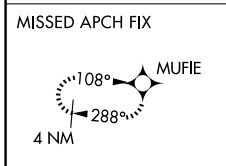
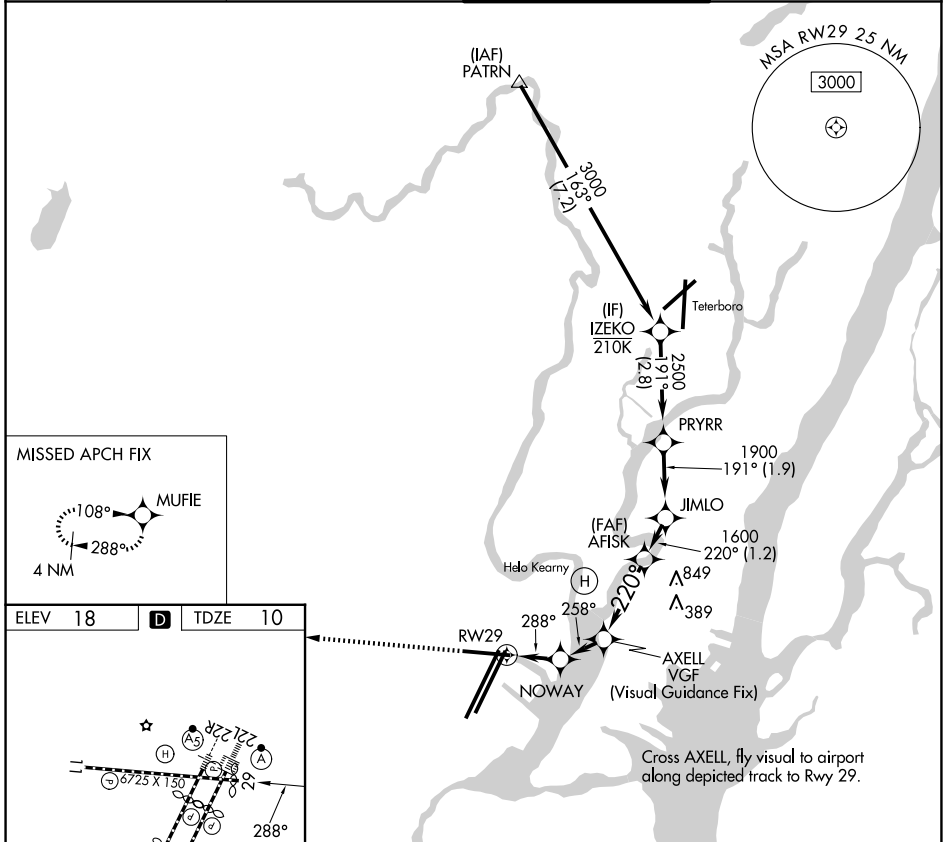
APP CRS	Rwy Ldg	6501
288°	TDZE	10
	Apt Elev	18

RNP APCH - GPS.
 RADAR required.

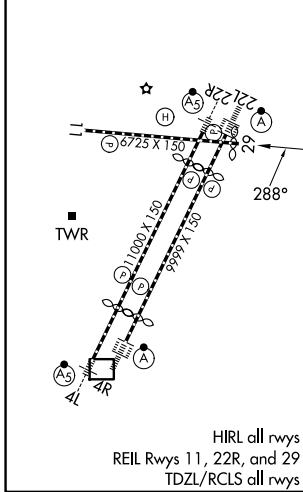
▼ Rwy 29 helicopter visibility reduction below 1 SM NA. Straight-in Rwy 29 at night, operational VGSi required, remain at or above VGSi glidepath until threshold.
▲ Caution, departing TEB Rwy 24 traffic climbing to 1500' MSL.

MISSED APPROACH: (Do not exceed 1.65K until Rwy 29) Climb to 2000 on the extended visual approach track to Rwy 29, then climb to 3000 direct MUFIE and hold.

D-ATIS	NEWARK APP CON	NEWARK TOWER	GND CON
115.7 134.825	128.55 379.9	118.3 257.6	121.8



ELEV 18	D	TDZE 10
---------	----------	---------



2000	to RWY29	3000	MUFIE	Turns required in the visual segment. * Recommended ALT.	IZEKO	
RWY29		NOWAY	AXELL	AFISK	JIMLO	PRYRR
*500		*880	1600	1600	1900	3000
-1.4 NM		-1.2 NM	-2.3 NM	-1.2 NM	-1.9 NM	-2.8 NM
CATEGORY A		CATEGORY B		CATEGORY C		CATEGORY D
LNAV MDA		880-3		870 (900-3)		

NE-2, 14 MAY 2026 to 11 JUN 2026

NE-2, 14 MAY 2026 to 11 JUN 2026