

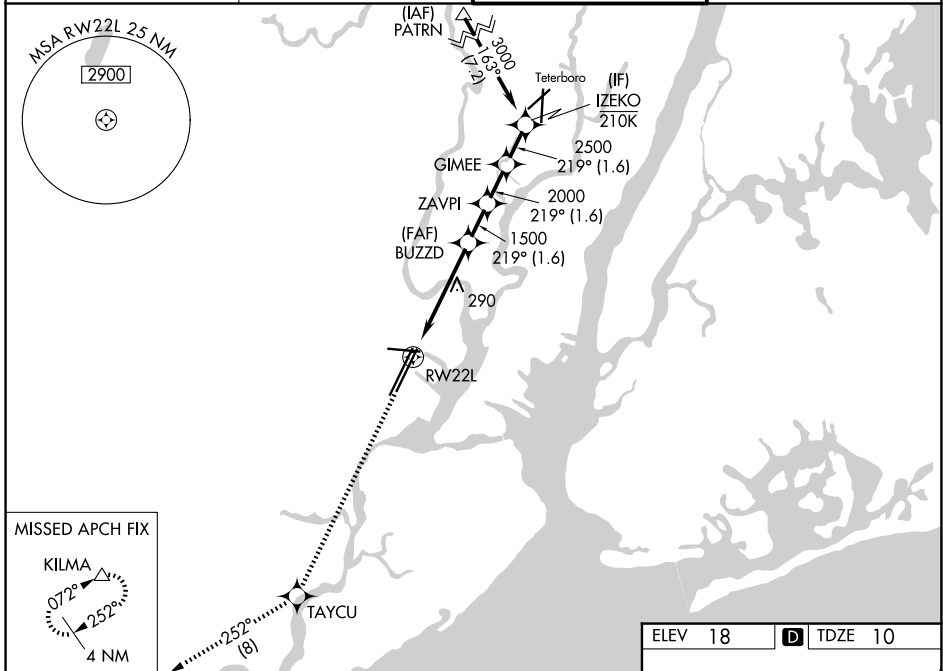
WAAS CH 70324 W22A	APP CRS 219°	Rwy Ldg 8205 TDZE 10 Apt Elev 18
--	------------------------	---

RNAV (GPS) Z RWY 22L

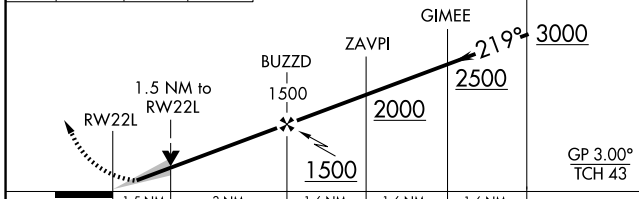
NEWARK LIBERTY INTL (EWR)

RNP APCH - GPS.	ALSF-2 	MISSED APPROACH: Climb to 3000 direct TAYCU and on track 252° to KILMA and hold.
	For uncompensated Baro-VNAV systems, LNAV/VNAV NA below -11°C or above 54°C. Circling NA south of Rwy 11-29. When Circling to Rwy 29 at night, operational VGSI required, remain on or above VGSI glidepath until threshold. Caution, departing TEB Rwy 24 traffic climbing to 1500' MSL.	

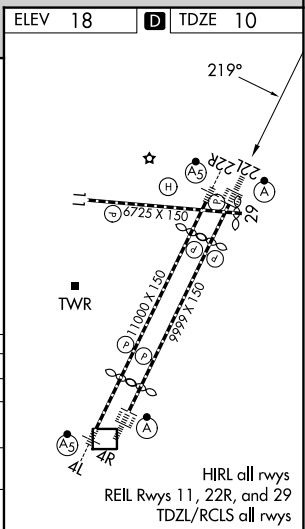
D-ATIS 115.7 134.825	NEWARK APP CON 128.55 379.9	NEWARK TOWER 118.3 257.6	GND CON 121.8
--------------------------------	---------------------------------------	------------------------------------	-------------------------



3000	TAYCU	tr 252°	KILMA	VGSI and RNAV glidepath not coincident (VGSI Angle 3.00/TCH 60).
------	-------	---------	-------	--



CATEGORY	A	B	C	D
LPV DA		210/18	200 (200-½)	
LNAV/VNAV DA		461/45	451 (500-¾)	
LNAV MDA	560/24	550 (600-½)	560/60	550 (600-1¼)
CIRCLING	660-1	642 (700-1)	900-2¾ 882 (900-2¾)	900-3 882 (900-3)



NE-2, 14 MAY 2026 to 11 JUN 2026

NE-2, 14 MAY 2026 to 11 JUN 2026

HIRL all rwys
REIL Rwys 11, 22R, and 29
TDZL/RCLS all rwys