

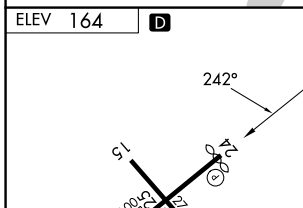
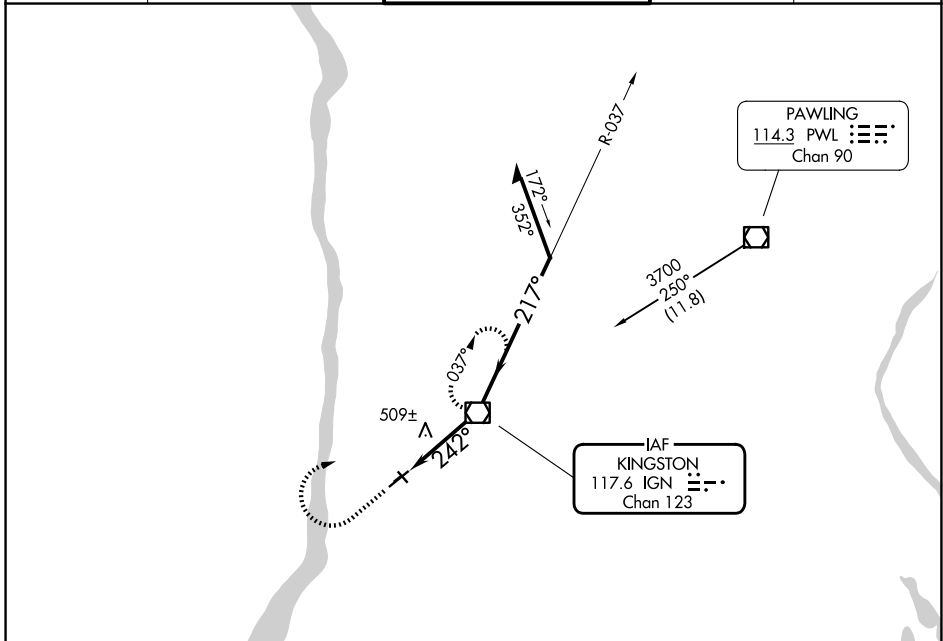
VOR/DME IGN <b>117.6</b> Chan <b>123</b>	APP CRS <b>242°</b>	Rwy Ldg TDZE Apt Elev <b>164</b>	<b>N/A</b> <b>N/A</b>
--	------------------------	--	--------------------------

# VOR-A

HUDSON VALLEY RGNL (POU)

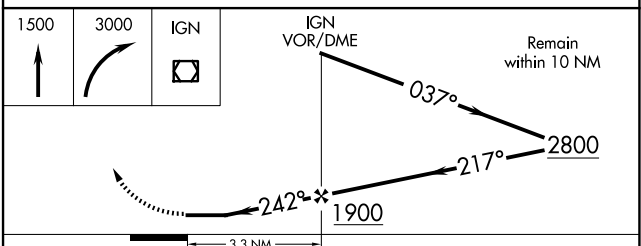
<p><b>⚠</b> Circling NA to Rwys 7 and 25. Circling Rwy 15, 33 NA at night. Rwy 15, 33 helicopter visibility reduction below 1 SM NA. When local altimeter not received, use Montgomery altimeter setting and increase all MDAs 80 feet and visibility Cat C ¼ SM.</p>	<p><b>MISSED APPROACH:</b> Climb to 1500 then climbing right turn to 3000 direct IGN VOR/DME and hold, continue climb-in-hold to 3000.</p>
---	--

ATIS <b>126.75</b>	NEW YORK APP CON <b>132.75 363.1</b>	DUTCHESS COUNTY TOWER ★ <b>124.0</b> (CTAF) <b>269.15</b>	GND CON <b>121.8</b>	UNICOM <b>122.95</b>
-----------------------	---	--	-------------------------	-------------------------



ELEV 164 **D**

MIRL Rwy 15-33  
HIRL Rwy 6-24 **Ⓛ**  
REIL Rwy 24 **Ⓛ**  
REIL Rwy 33 **Ⓛ**



FAF to MAP 3.3 NM				
CATEGORY	A	B	C	D
CIRCLING	760-1 596 (600-1)	840-1 676 (700-1)	940-2¼ 776 (800-2¼)	1080-3 916 (1000-3)

NE-2, 14 MAY 2026 to 11 JUN 2026

NE-2, 14 MAY 2026 to 11 JUN 2026