

WAAS CH 61302 W18A	APP CRS 177°	Rwy Ldg 5510 TDZE 8 Apt Elev 8
--	------------------------	---

RNAV (GPS) RWY 18R

LAKEFRONT (NEW)

⚠ Inoperative table does not apply to LPV all Cats. For inoperative MALSR, increase LNAV Cat A and B visibility to 1 mile. Baro-VNAV NA when using Louis Armstrong New Orleans Intl altimeter setting. For uncompensated Baro-VNAV systems, LNAV/VNAV NA below -1.5°C (5°F) or above 49°C (120°F). DME/DME RNP-0.3 NA. Visibility reduction by helicopters NA. When local altimeter setting not received; use Louis Armstrong New Orleans Intl altimeter setting and increase all DA 29 feet and all MDA 40 feet; increase LNAV/VNAV all Cats and LNAV and Circling Cat C and D visibility ¼ mile. VDP NA with Louis Armstrong New Orleans Intl altimeter setting. For inoperative MALSR when using Louis Armstrong New Orleans Intl altimeter setting, increase LNAV Cat A and B visibility to 1 mile.

MALSR



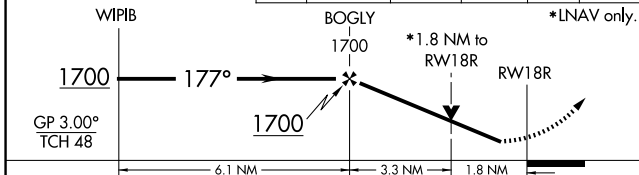
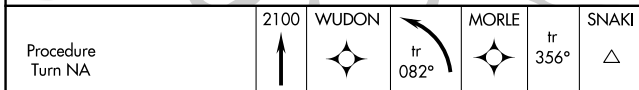
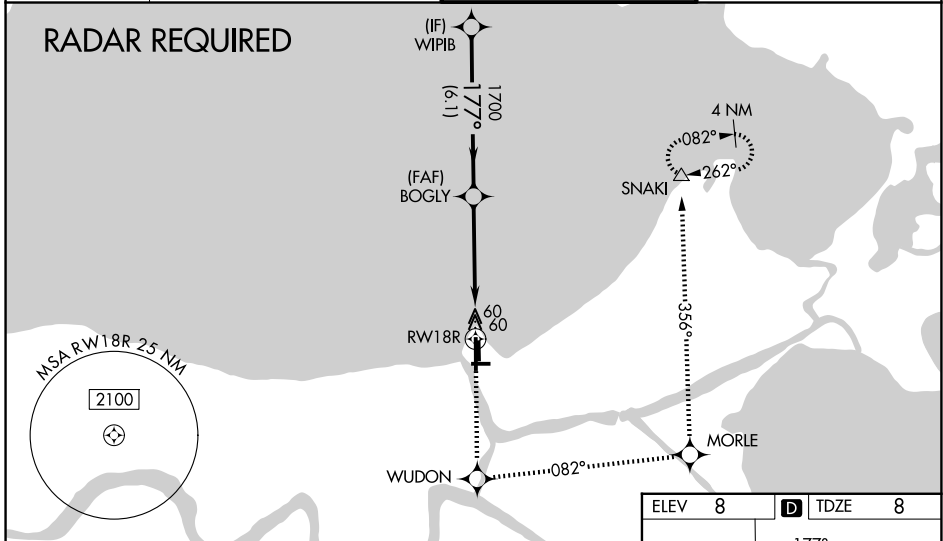
MISSED APPROACH:
Climb to 2100 direct WUDON and left turn on track 082° to MORLE and on track 356° to SNAKI and hold.

ATIS
124.9

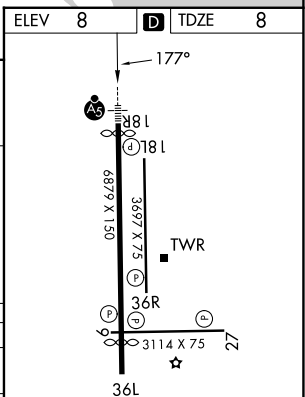
NEW ORLEANS APP CON
133.15 290.3 (N)
123.85 256.9 (S)

LAKEFRONT TOWER *
118.95 (CTAF) 0

GND CON
121.7 335.575



CATEGORY	A	B	C	D
LPV DA		258-¾	250 (300-¾)	
LNAV/DA VNAV		521-1¼	513 (600-1¼)	
LNAV MDA	640-¾	632 (700-¾)	640-1¼	640-1½
			632 (700-1¼)	632 (700-1½)
CIRCLING	640-1	632 (700-1)	700-2	820-2¾
			692 (700-2)	812 (900-2¾)



MIRL Rwy 18R-36L
MIRL Rwys 9-27 and 18L-36R
REIL Rwys 9, 18L, 36L and 36R

SC-4, 14 MAY 2026 to 11 JUN 2026

SC-4, 14 MAY 2026 to 11 JUN 2026