

WAAS CH <b>86913</b> <b>W36A</b>	APP CRS <b>357°</b>	Rwy Ldg TDZE Apt Elev	<b>5135</b> <b>8</b> <b>8</b>
--	------------------------	-----------------------------	-------------------------------------

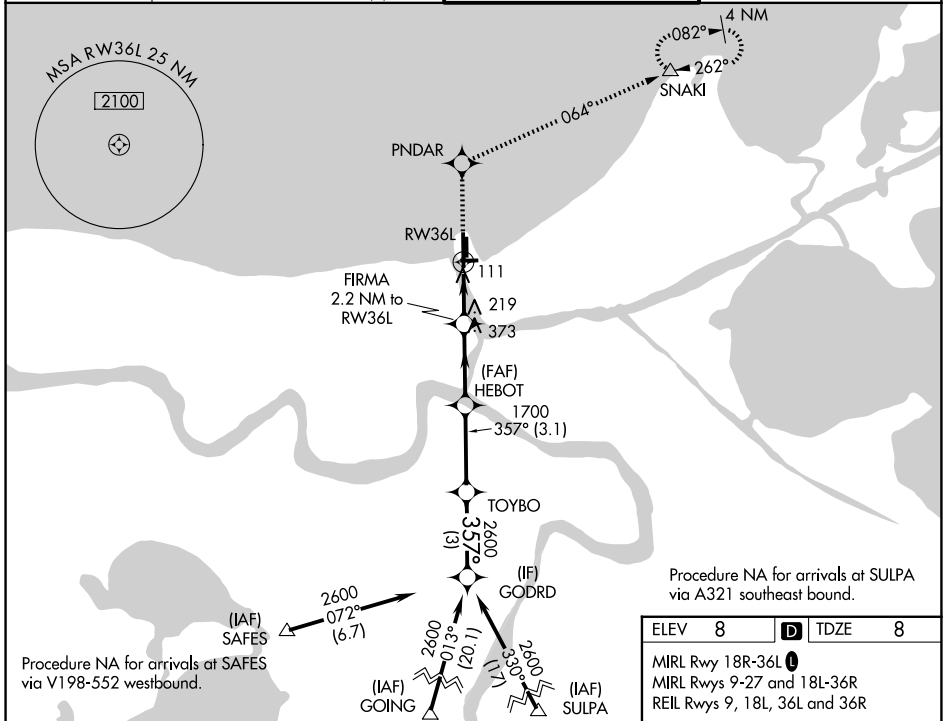
# RNAV (GPS) RWY 36L

LAKEFRONT (NEW)

**⚠** For uncompensated Baro-VNAV systems, LNAV/VNAV NA below -15°C (5°F) or above 49°C (120°F). DME/DME RNP-0.3 NA. When local altimeter setting not received, use Louis Armstrong New Orleans Intl altimeter setting; increase LPV DA to 369 feet, LNAV/VNAV DA to 460 feet and all visibilities ½ mile; increase all MDA 40 feet and Circling Cat D visibility ½ mile. VDP and Baro-VNAV NA when using Louis Armstrong New Orleans Intl altimeter setting.

**MISSED APPROACH:** Climb to 2100 direct PNDAR and via track 064° to SNAKI and hold.

ATIS <b>124.9</b>	NEW ORLEANS APP CON <b>133.15 290.3 (N)</b> <b>123.85 256.9 (S)</b>	LAKEFRONT TOWER * <b>118.95 (CTAF) 0</b>	GND CON <b>121.7 335.575</b>
----------------------	---	---	---------------------------------



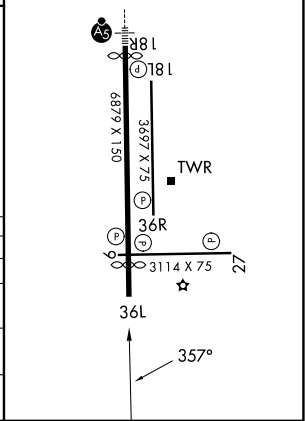
Procedure NA for arrivals at SULPA via A321 southeast bound.

Procedure NA for arrivals at SAFES via V198-552 westbound.

ELEV <b>8</b>	<b>D</b> TDZE <b>8</b>
---------------	------------------------

MIRL Rwy 18R-36L  
MIRL Rwy 9-27 and 18L-36R  
REIL Rwy 9, 18L, 36L and 36R

2100	PNDAR	tr 064°	SNAKI	Procedure Turn NA
*LNAV only.		FIRMA 2.2 NM to RW36L	HEBOT	TOYBO
RW36L		*1.7 NM to RW36L	1700	357° 2600
1.7 NM		0.5 NM	2.9 NM	3.1 NM
CATEGORY	A	B	C	D
LPV DA	340-1 3/8		332 (400-1 1/8)	
LNAV/VNAV DA	431-1 3/8		423 (500-1 3/8)	
LNAV MDA	600-1	592 (600-1)	600-1 3/4	592 (600-1 3/4)
CIRCLING	600-1	592 (600-1)	700-2	820-2 3/4
			692 (700-2)	812 (900-2 3/4)



SC-4, 14 MAY 2026 to 11 JUN 2026

SC-4, 14 MAY 2026 to 11 JUN 2026