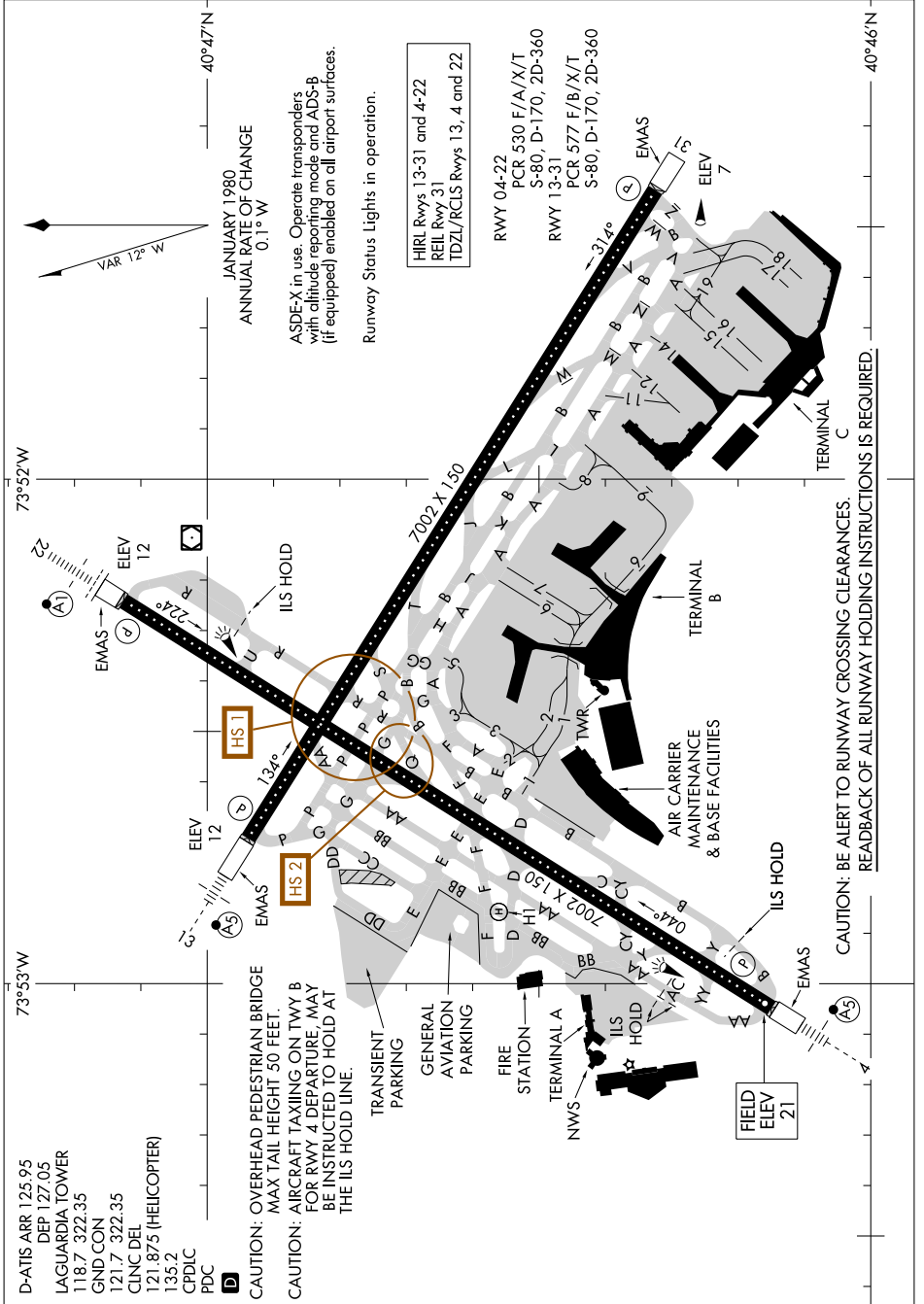


AIRPORT DIAGRAM

AL-289 (FAA)

LAGUARDIA (LGA)
NEW YORK, NEW YORK

NE-2, 14 MAY 2026 to 11 JUN 2026



D-ATIS ARR 125.95
 DEP 127.05
 LAGUARDIA TOWER
 118.7 322.35
 GND CON
 121.7 322.35
 CLNC DEL
 121.875 (HELICOPTER)
 135.2
 CPD/C
 PDC

D CAUTION: OVERHEAD PEDESTRIAN BRIDGE
 MAX TAIL HEIGHT 50 FEET.
 CAUTION: AIRCRAFT TAXIING ON TWY B
 FOR RWY 4 DEPARTURE, MAY
 BE INSTRUCTED TO HOLD AT
 THE ILS HOLD LINE.

CAUTION: BE ALERT TO RUNWAY CROSSING CLEARANCES.
 READBACK OF ALL RUNWAY HOLDING INSTRUCTIONS IS REQUIRED.

AIRPORT DIAGRAM

NEW YORK, NEW YORK
LAGUARDIA (LGA)

NE-2, 14 MAY 2026 to 11 JUN 2026