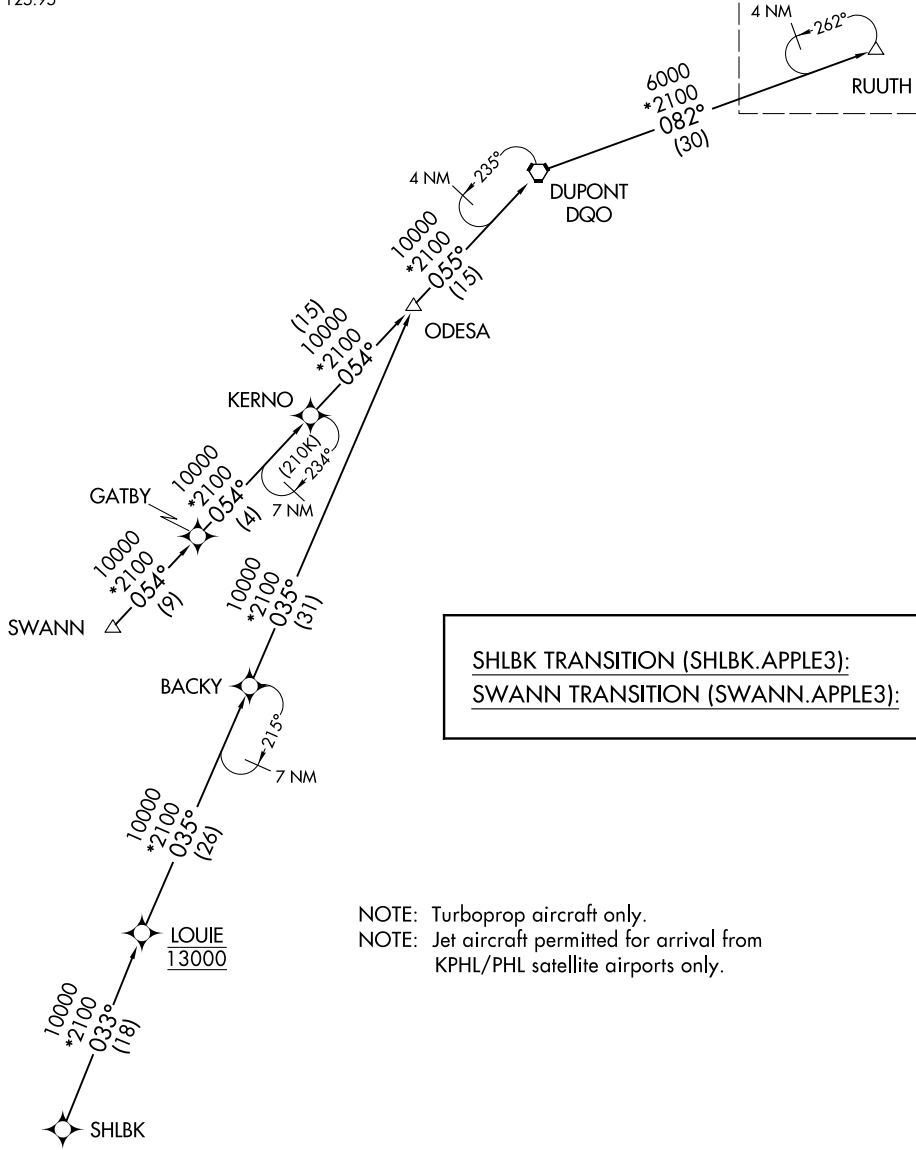


# APPLE THREE ARRIVAL (RNAV) Transition Routes

PHILADELPHIA APP CON  
119.75 269.25  
POTOMAC APP CON  
124.55 317.425  
NEW YORK APP CON  
127.3 322.35  
D-ATIS ARR  
125.95

RNAV 1 - DME/DME/IRU or GPS.  
RADAR required.

See following page  
for Arrival Route.  
4 NM  
262°  
RUUTH



SHLBK TRANSITION (SHLBK.APPLE3):  
SWANN TRANSITION (SWANN.APPLE3):

NOTE: Turboprop aircraft only.  
NOTE: Jet aircraft permitted for arrival from  
KPHL/PHL satellite airports only.

(CONTINUED ON FOLLOWING PAGE)

NOTE: Chart not to scale.

NE-2, 14 MAY 2026 to 11 JUN 2026

NE-2, 14 MAY 2026 to 11 JUN 2026

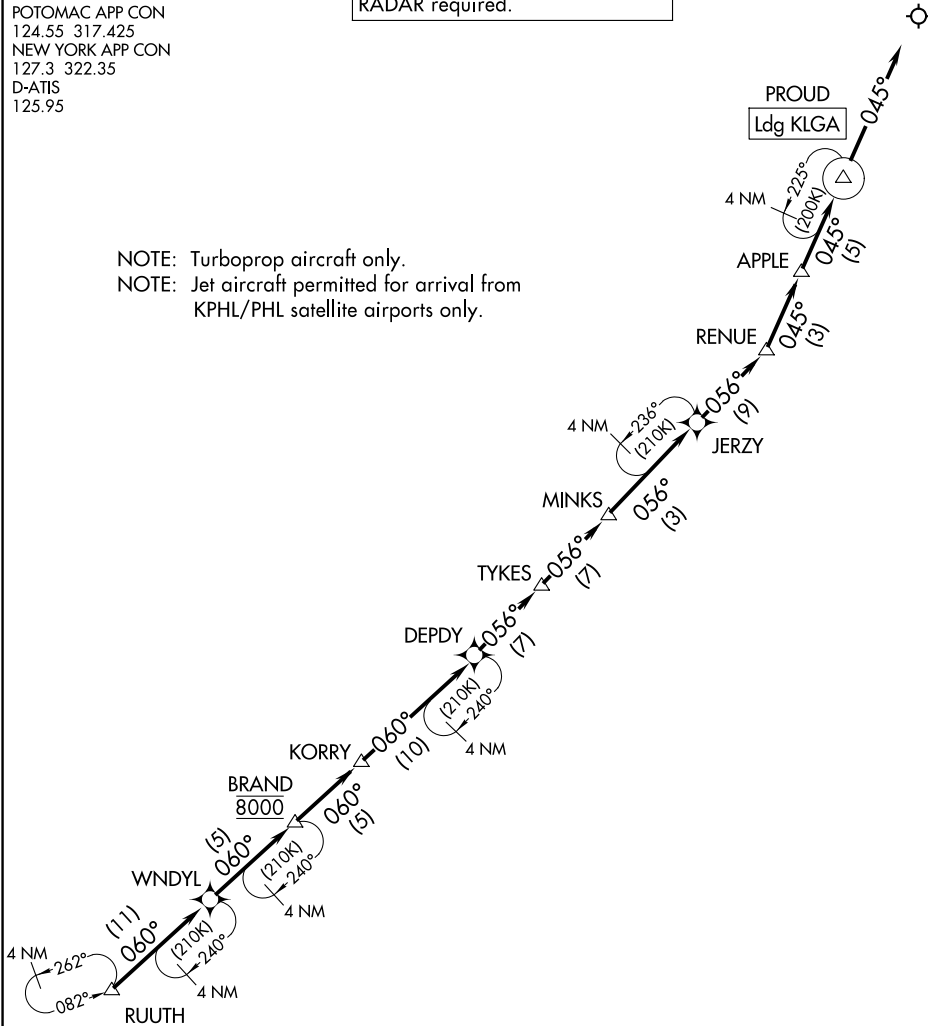
# APPLE THREE ARRIVAL (RNAV) Arrival Routes

NEW YORK, NEW YORK

PHILADELPHIA APP CON  
119.75 269.25  
POTOMAC APP CON  
124.55 317.425  
NEW YORK APP CON  
127.3 322.35  
D-ATIS  
125.95

RNAV 1 - DME/DME/IRU or GPS.  
RADAR required.

NOTE: Turboprop aircraft only.  
NOTE: Jet aircraft permitted for arrival from  
KPHL/PHL satellite airports only.



NOTE: Chart not to scale.

## ARRIVAL ROUTE DESCRIPTION

From RUUTH on track 060° to WNDYL, then on track 060° to cross BRAND at 8000, then on track 060° to KORRY, then on track 060° to DEPDY, then on track 056° to TYKES, then on track 056° to MINKS, then on track 056° to JERZY, then on track 056° to RENUUE, then on track 045° to APPLE, then on track 045° to PROUD, then on track 045°. Expect RADAR vectors to final approach course.

# APPLE THREE ARRIVAL (RNAV) Arrival Routes