

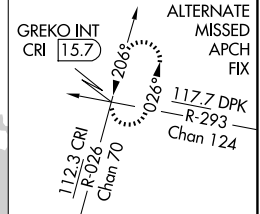
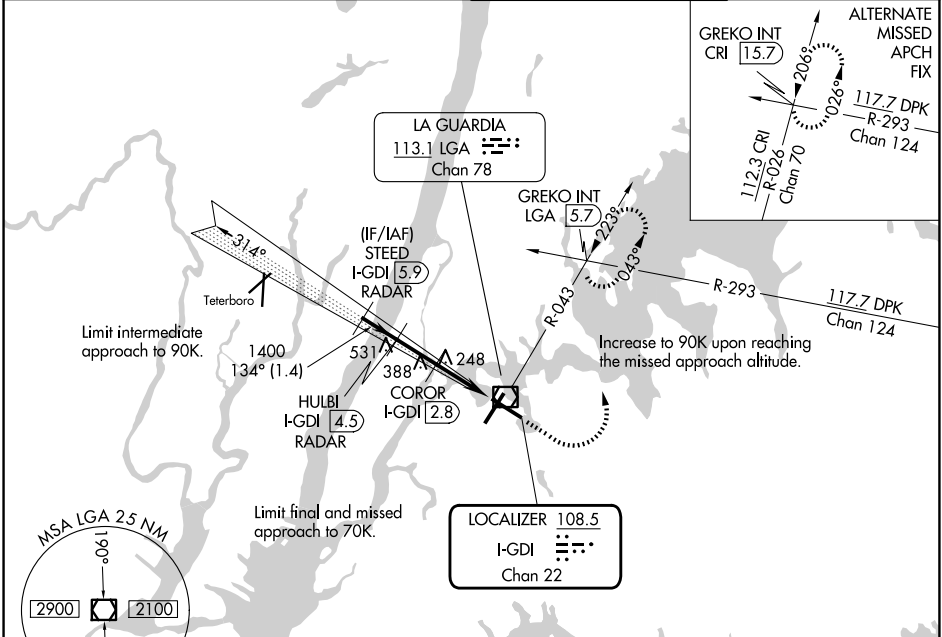
LOC/DME I-GDI 108.5 Chan 22	APP CRS 134°	Rwy Ldg TDZE 12 Apt Elev 21	7002
---	------------------------	---	-------------

COPTER ILS or LOC RWY 13

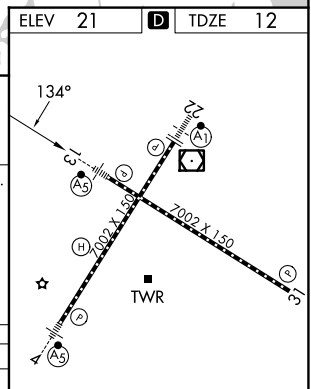
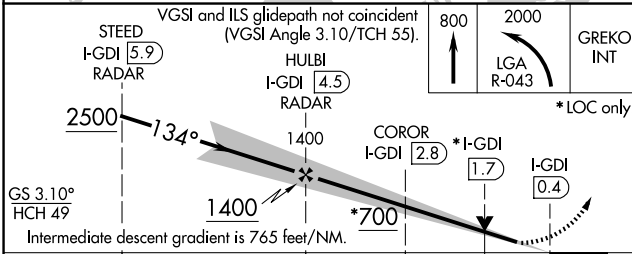
LAGUARDIA (LGA)

RADAR required for procedure entry. DME or RADAR required.	MALSR 	MISSED APPROACH: Climb to 800 then climbing left turn to 2000 on LGA VOR/DME R-043 to GREKO INT/LGA 5.7 DME and hold, continue climb-in-hold to 2000.
---	-----------	---

D-ATIS 125.95	NEW YORK APP CON 120.8 322.35	LAGUARDIA TOWER 118.7 322.35	GND CON 121.7 322.35
-------------------------	---	--	--------------------------------



ELEV 21	D	TDZE 12
---------	----------	---------



CATEGORY	COPTER				
H-ILS 13	212/12	200 (200-¼)			
H-LOC 13	700/12	688 (700-¼)			
COROR FIX MINIMUMS					
H-LOC 13	500/12	488 (500-¼)			
FAF to MAP 4.1 NM					
Knots	45	60	75	90	105
Min:Sec	5:28	4:06	3:17	2:44	2:21

NE-2, 14 MAY 2026 to 11 JUN 2026

NE-2, 14 MAY 2026 to 11 JUN 2026