

LOC/DME I-GDI 108.5 Chan 22	APP CRS 134°	Rwy Ldg 7002 TDZE 12 Apt Elev 21
---	------------------------	---

ILS or LOC RWY 13

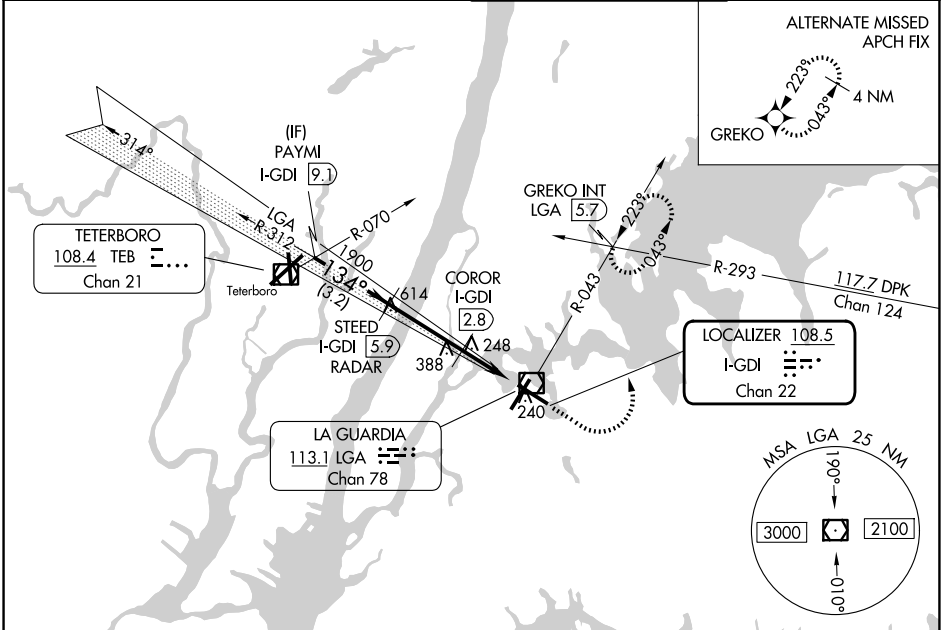
LAGUARDIA (LGA)

Radar required for procedure entry. DME or RADAR required for LOC only.

▼ For inop ALS, increase S-LOC 13 Cats C/D visibility to 2½ SM.
▲ Circling NA northwest of Rwy 4 and southwest of Rwy 13.

MALSR MISSED APPROACH: Climb to 800 then climbing left turn to 2000 on LGA VOR/DME R-043 to GREKO INT/LGA 5.7 DME and hold, continue climb-in-hold to 2000.

D-ATIS 125.95	NEW YORK APP CON 120.8 322.35	LAGUARDIA TOWER 118.7 322.35	GND CON 121.7 322.35
-------------------------	---	--	--------------------------------



NE-2, 14 MAY 2026 to 11 JUN 2026

NE-2, 14 MAY 2026 to 11 JUN 2026

VGSI and ILS glidepath not coincident (VGSI Angle 3.10/TCH 55).	ELEV 21	TDZE 12			
<p>PAYMI I-GDI (9.1)</p> <p>STEED I-GDI (5.9) RADAR</p> <p>COROR I-GDI (2.8)</p> <p>I-GDI (1.7)</p> <p>GREKO INT</p> <p>*1900 when assigned by ATC</p> <p>GS 3.10° TCH 49</p> <p>134°</p> <p>1900</p> <p>800</p> <p>3.2 NM</p> <p>3.1 NM</p> <p>1.1 NM</p> <p>1.3 NM</p>					
CATEGORY	A	B	C	D	
S-ILS 13	212/18				
S-LOC 13	800/24 788 (800-½)	800/40 788 (800-¾)	800-1¼ 1059 (1100-3)	788 (800-1¼)	
CIRCLING	800-1 779 (800-1)	800-1¼ 779 (800-1¼)	1080-3 1059 (1100-3)	1260-3 1239 (1300-3)	
COROR FIX MINIMUMS					
S-LOC 13	500/24	488 (500-½)	500/50	488 (500-1)	
CIRCLING	700-1	679 (700-1)	1080-3 1059 (1100-3)	1260-3 1239 (1300-3)	
FAF to MAP 5.5 NM					
Knots	60	90	120	150	180
Min:Sec	5:30	3:40	2:45	2:12	1:50

TDZL/RCLS Rws 4, 13 and 22
 HIRL Rws 4-22 and 13-31
 REIL Rwy 31