

PARK VISUAL RWY 31

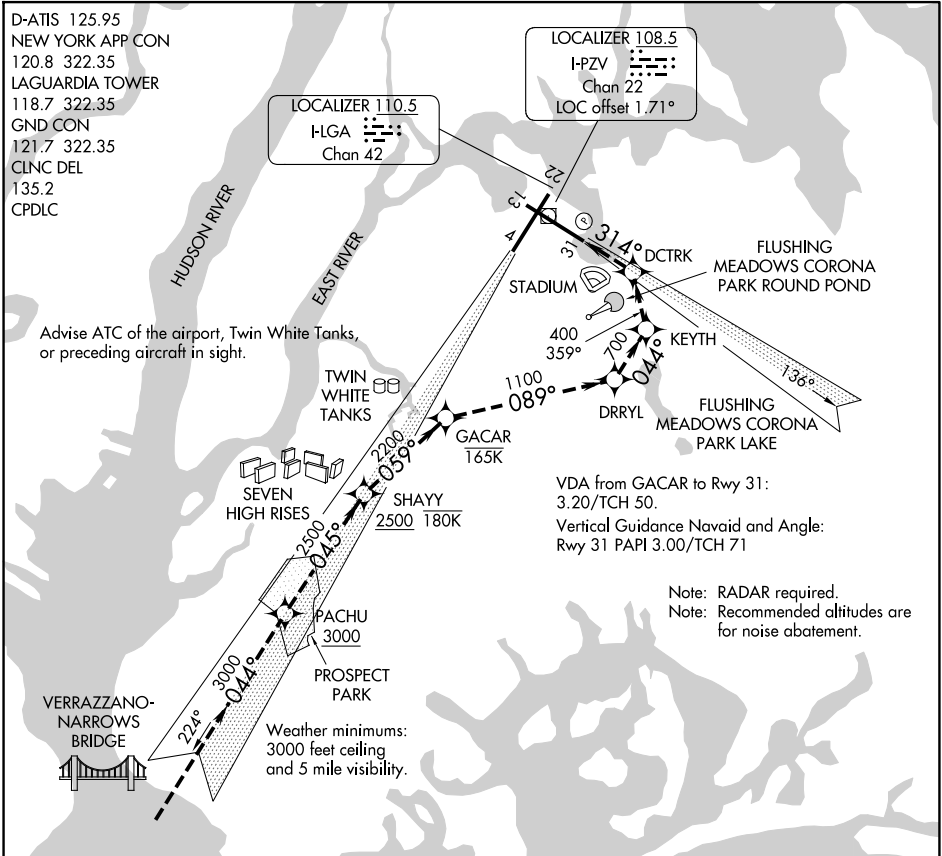
AL-289 (FAA)

LAGUARDIA (LGA)
NEW YORK, NEW YORK

D-ATIS 125.95
 NEW YORK APP CON
 120.8 322.35
 LAGUARDIA TOWER
 118.7 322.35
 GND CON
 121.7 322.35
 CLNC DEL
 135.2
 CPDLC

LOCALIZER 110.5
 I-LGA
 Chan 42

LOCALIZER 108.5
 I-PZV
 Chan 22
 LOC offset 1.71°



Advise ATC of the airport, Twin White Tanks, or preceding aircraft in sight.

VDA from GACAR to Rwy 31:
 3.20/TCH 50.
 Vertical Guidance Navaid and Angle:
 Rwy 31 PAPI 3.00/TCH 71

Note: RADAR required.
 Note: Recommended altitudes are for noise abatement.

Weather minimums:
 3000 feet ceiling
 and 5 mile visibility.

NE-2, 14 MAY 2026 to 11 JUN 2026

NE-2, 14 MAY 2026 to 11 JUN 2026

1 NM	2	3	4	5	6	7	8	9	10	11	12	13	14	15	16
------	---	---	---	---	---	---	---	---	----	----	----	----	----	----	----

When cleared for the PARK VISUAL RWY 31 aircraft may proceed via the RNAV (GPS) X RWY 31 approach to Rwy 31 and/or cross PACHU at 3000 or above and tracking 045° to SHAIYY at or below 180K (Seven High Rises) at 2500 or above and turn right tracking 059° to GACAR at or below 165K (Twin White Tanks) then turn right tracking 089° to DRRYL (Flushing Meadows Corona Park Lake) then turn left tracking 044° to KEYTH (Flushing Meadows Corona Park Round Pond) then left turn tracking 359° to DCTRK (stadium) then left turn direct RWY 31.

PARK VISUAL RWY 31

40°47'N-73°52'W

NEW YORK, NEW YORK
LAGUARDIA (LGA)