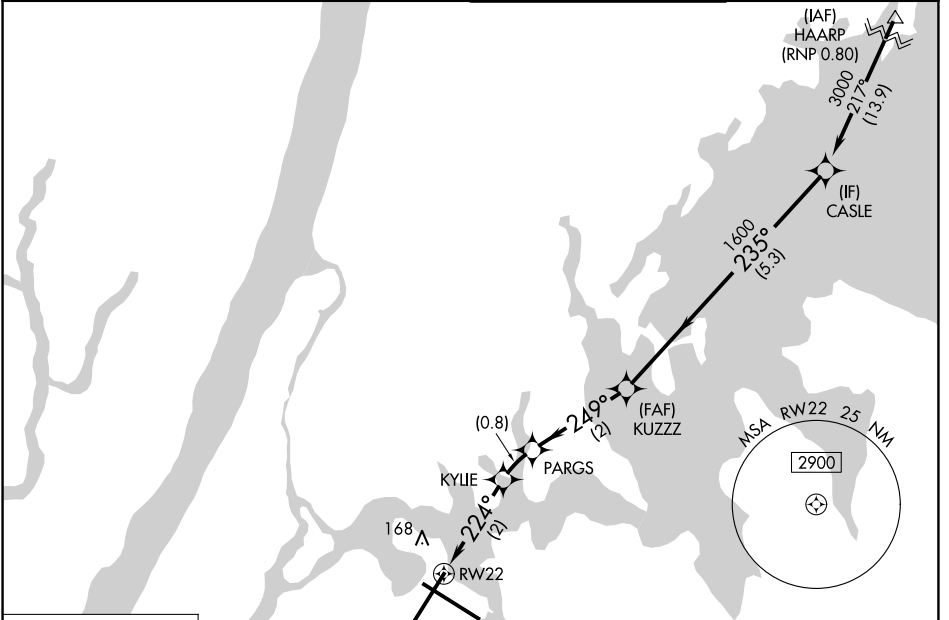


APP CRS	Rwy Ldg	<b>7002</b>
<b>224°</b>	TDZE	<b>12</b>
	Apt Elev	<b>21</b>

# RNAV (RNP) Z RWY 22

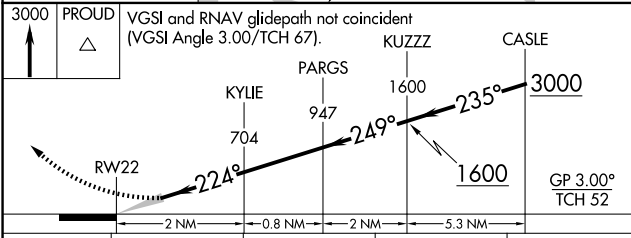
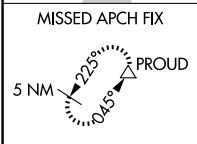
LAGUARDIA (LGA)

RNP AR APCH - GPS. RF required.		ALSF-1	MISSED APPROACH: Climb to 3000 direct PROUD and hold, continue climb-in-hold to 3000. * Missed approach requires minimum climb of 397 feet per NM to 560.
<p><b>▽</b> For uncompensated Baro-VNAV systems, procedure NA below -11°C or above 54°C. For inop ALS, increase RNP 0.30 DA* visibility to RVR 5500.</p> <p><b>△</b> NA</p>			
D-ATIS <b>125.95</b>	NEW YORK APP CON <b>120.8 322.35</b>	LAGUARDIA TOWER <b>118.7 322.35</b>	GND CON <b>121.7 322.35</b>



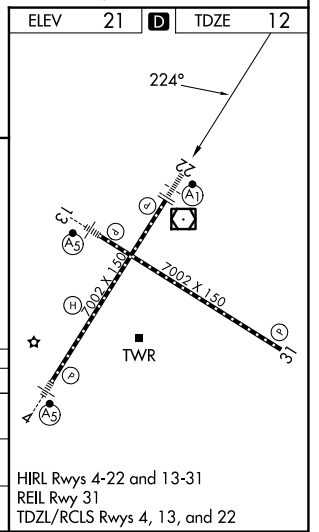
NE-2, 14 MAY 2026 to 11 JUN 2026

NE-2, 14 MAY 2026 to 11 JUN 2026



CATEGORY	A	B	C	D
RNP 0.30 DA*		384/35	372 (400- $\frac{3}{4}$ )	
RNP 0.30 DA		445/40	433 (500- $\frac{3}{4}$ )	

**AUTHORIZATION REQUIRED**



HIRL Rwys 4-22 and 13-31  
REIL Rwy 31  
TDZL/RCLS Rwys 4, 13, and 22