

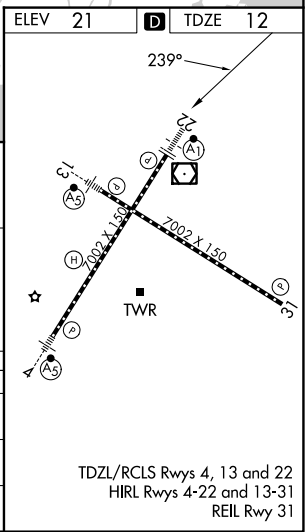
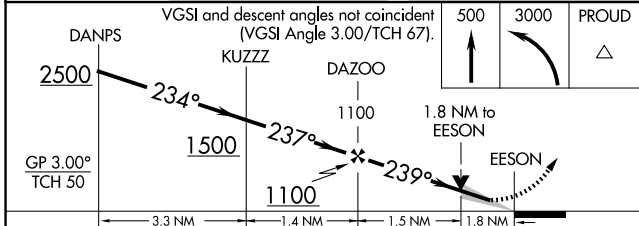
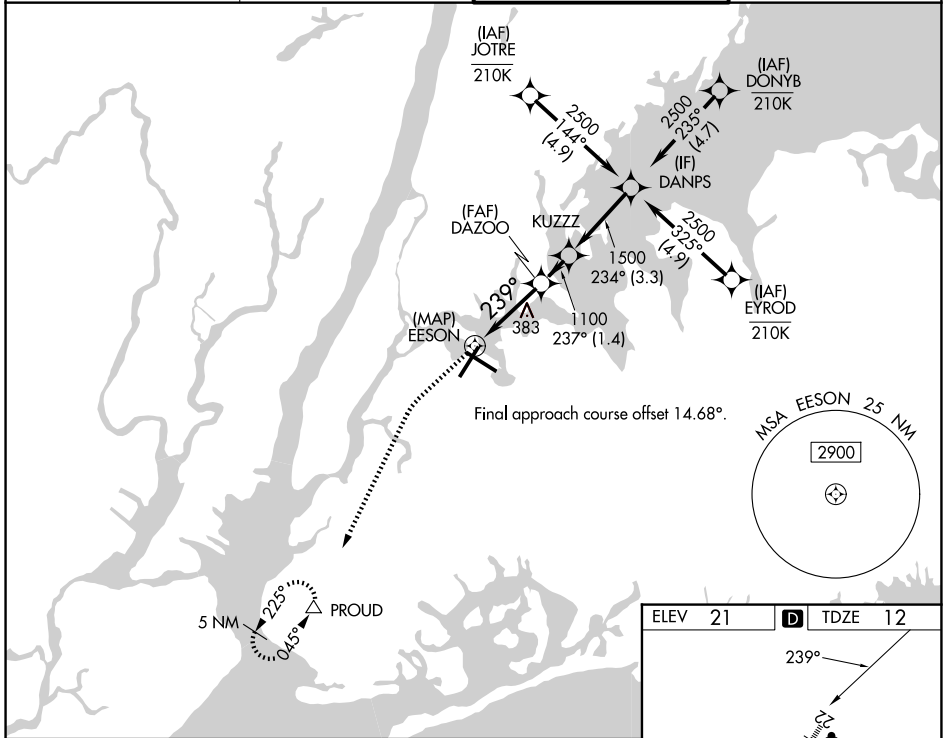
APP CRS	Rwy Ldg	<b>7002</b>
<b>239°</b>	TDZE	<b>12</b>
	Apt Elev	<b>21</b>

# RNAV (GPS) X RWY 22

LAGUARDIA (LGA)

RNP APCH - GPS.	ALSF-1 	MISSED APPROACH: Climb to 500 then climbing left turn to 3000 direct PROUD and hold, continue climb-in-hold to 3000.
Circling NA northwest of Rwy 4 and southwest of Rwy 13. For uncompensated Baro-VNAV systems, LNAV/VNAV NA below -11°C or above 54°C. For inop ALS, increase LNAV/VNAV all Cats visibility to RVR 5500; increase LNAV Cats C/D visibility to 1¼ SM.		

D-ATIS <b>125.95</b>	NEW YORK APP CON <b>120.8 322.35</b>	LAGUARDIA TOWER <b>118.7 322.35</b>	GND CON <b>121.7 322.35</b>
-------------------------	---	--	--------------------------------



CATEGORY	A	B	C	D
LNAV/VNAV DA		381/35	369 (400-%)	
LNAV MDA	640/24	628 (700-½)	640-1⅓	628 (700-1⅓)
CIRCLING	680-1	659 (700-1)	700-2 679 (700-2)	760-2¼ 739 (800-2¼)

NE-2, 14 MAY 2026 to 11 JUN 2026

NE-2, 14 MAY 2026 to 11 JUN 2026