

APP CRS	Rwy Ldg	7002
314°	TDZE	7
	Apt Elev	21

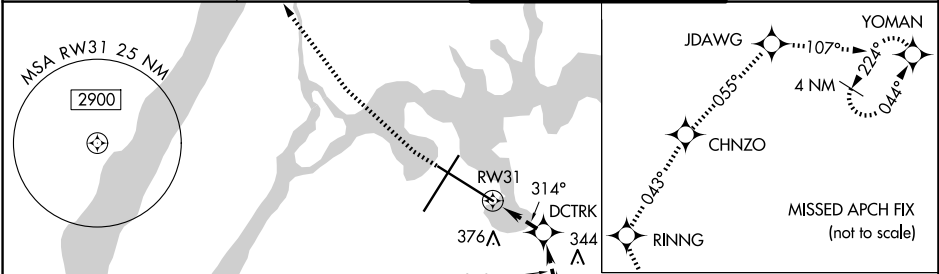
RNAV (GPS) X RWY 31

LAGUARDIA (LGA)

RNP APCH - GPS.
 RADAR required.
 Rwy 31 helicopter visibility reduction below 3/4 SM NA.

MISSED APPROACH: (Do not exceed 165K until Rwy 31 and do not exceed 210K until YOMAN) Climbing right turn to 3000 direct RINNG and on track 043° to CHNZO and on track 055° to JDAWG and on track 107° to YOMAN and hold.

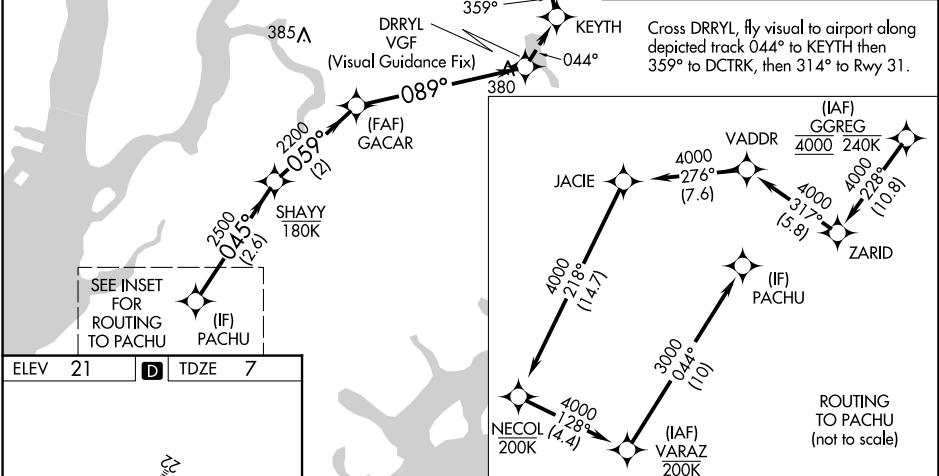
D-ATIS 125.95	NEW YORK APP CON 120.8 322.35	LAGUARDIA TOWER 118.7 322.35	GND CON 121.7 322.35
-------------------------	---	--	--------------------------------



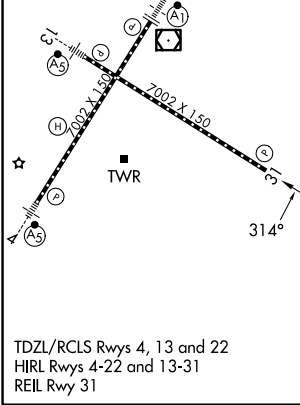
Cross DRRYL, fly visual to airport along depicted track 044° to KEYTH then 359° to DCTRK, then 314° to Rwy 31.

NE-2, 14 MAY 2026 to 11 JUN 2026

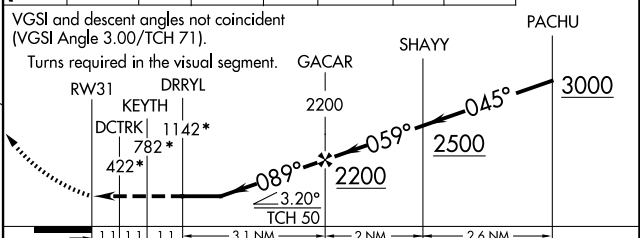
NE-2, 14 MAY 2026 to 11 JUN 2026



ELEV 21	D	TDZE 7
---------	----------	--------



3000	RINNG	CHNZO	JDAWG	YOMAN	* Check ALT.
	tr 043°		tr 055°	tr 107°	



CATEGORY	A	B	C	D
LNAV MDA	1160-4 1153 (1200-4)			