

WAAS CH 60918 W04A	APP CRS 044°	Rwy Ldg TDZE Apt Elev	7002 21 21
--	------------------------	-----------------------------	---------------------------------------

RNAV (GPS) Y RWY 4

LAGUARDIA (LGA)

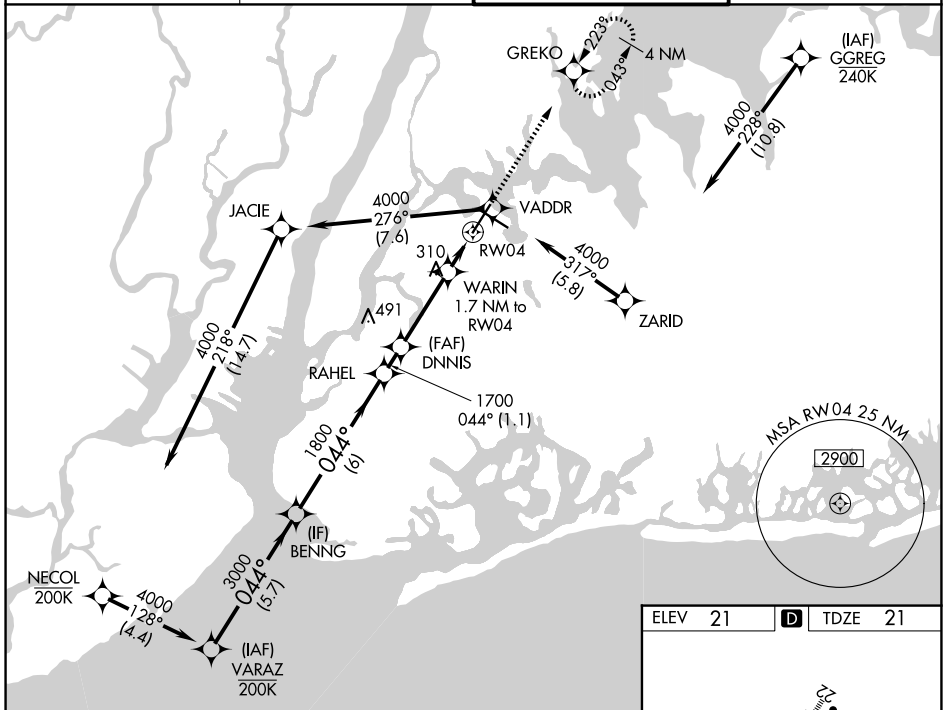
RNP APCH - GPS

⚠ Rwy 4 helicopter visibility reduction below RVR 5000 NA. Inop table does not apply to LPV all Cats, and LNAV Cat A and B. For uncompensated Baro-VNAV systems, LNAV/VNAV NA below -12°C or above 54°C. For inop ALS, increase LNAV/VNAV all Cats visibility to 1 3/8 SM. Circling NA northwest of Rwy 4 and southwest of Rwy 13. Going below glidepath may not provide obstacle clearance inside DA. Crossing Rwy threshold below charted TCH may not provide required visual area obstacle clearance. RVR 2400 authorized with FD or AP or HUD to DA.



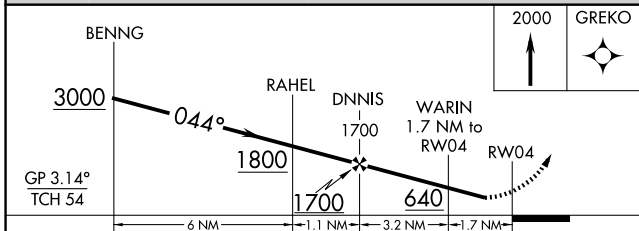
MISSED APPROACH:
Climb to 2000 direct GREKO and hold, continue climb-in-hold to 2000.

D-ATIS 125.95	NEW YORK APP CON 120.8 322.35	LAGUARDIA TOWER 118.7 322.35	GND CON 121.7 322.35
-------------------------	---	--	--------------------------------

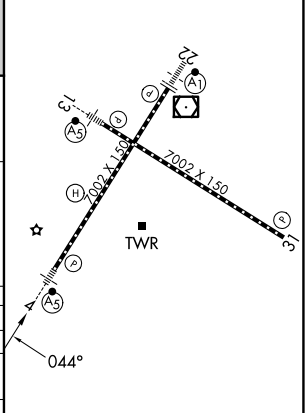


NE-2, 14 MAY 2026 to 11 JUN 2026

NE-2, 14 MAY 2026 to 11 JUN 2026



ELEV 21	D TDZE 21
---------	------------------



CATEGORY	A	B	C	D
LPV DA*		271/40	250 (300-3/4)	
LNAV/VNAV DA		499/50	478 (500-1)	
LNAV MDA	560/50	539 (600-1)	560/55	539 (600-1)
CIRCLING	680-1	659 (700-1)	700-2 679 (700-2)	760-2 1/4 739 (800-2 1/4)

TDZL/RCLS Rwy 4, 13 and 22
HIRL Rwy 4-22 and 13-31
REIL Rwy 31