

HI-TACAN Y RWY 10

TACAN NGU Chan 86Y	APCH CRS 097°	Rwy Idg 8071 TDZE 14 Arpt Elev 15
------------------------------	-------------------------	--

[USN]

NORFOLK NS (CHAMBERS FLD) (KNGU)

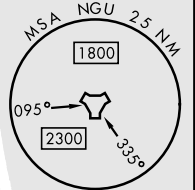
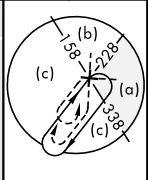
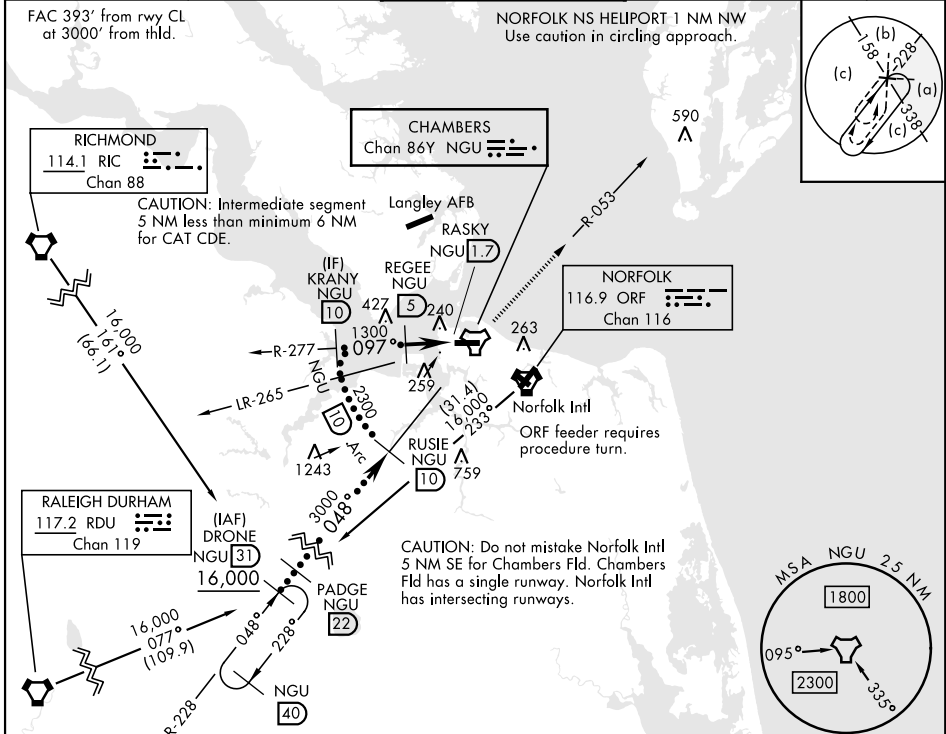
RNAV or RADAR required.



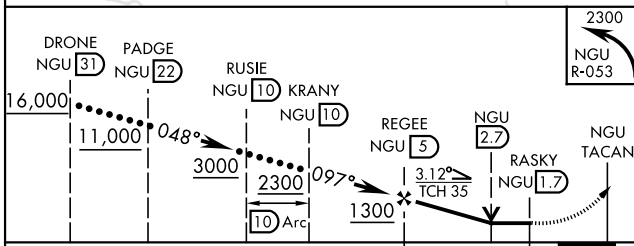
MISSED APPROACH: Climb left turn to 2300 via NGU TACAN R-053 then as directed by ATC.

* When ALS inop, increase CAT CDE vis to 1 3/8 miles.
** Circling not authorized S of Rwy 10-28.

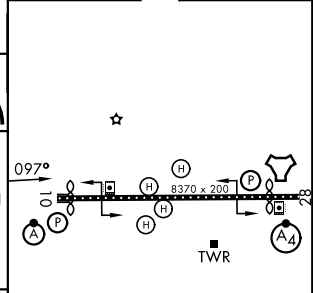
ATIS 118.425 338.225	APP CON 118.9 273.475	CHAMBERS TOWER 124.3 379.15	GND CON 121.8 370.85	ASR/PAR
--------------------------------	---------------------------------	---------------------------------------	--------------------------------	---------



EMERG SAFE ALT 100 NM 6100



ELEV	15	TDZE	14
------	----	------	----



CATEGORY	C	D	E
S-10*	520-1	506	(600-1)
CIRCLING**	540-1 1/2 525 (600-1 1/2)	600-2	585 (600-2)

HIRL Rwy 10-28
REIL Rwy 10, 28
TDZL/RCLS Rwy 10-28

HI-TACAN Y RWY 10

NE-3, 14 MAY 2026 to 11 JUN 2026

NE-3, 14 MAY 2026 to 11 JUN 2026